



Enriching Lives

**ILLUSTRATED SPARE PART LIST
FOR**

**3R1040 ENGINE
S/F POWER GENERATION
A/C – INTERNACO (EXPORT)**

**APPLICATION CODE NO.
3H.2084**

KIRLOSKAR OIL ENGINES LIMITED

Regd. Office: Laxmanrao Kirloskar Road, Khadki, Pune - 411 003, INDIA.
Tel.: +91 (20) 2581 0341, 2581 5341. Fax: +91 (20) 2581 3208, 2581 0209.
email: global@koel.co.in Website: www.kirloskar.com

AUGUST – 2006

PUBLICATION NO. 3H.031.45.0.00

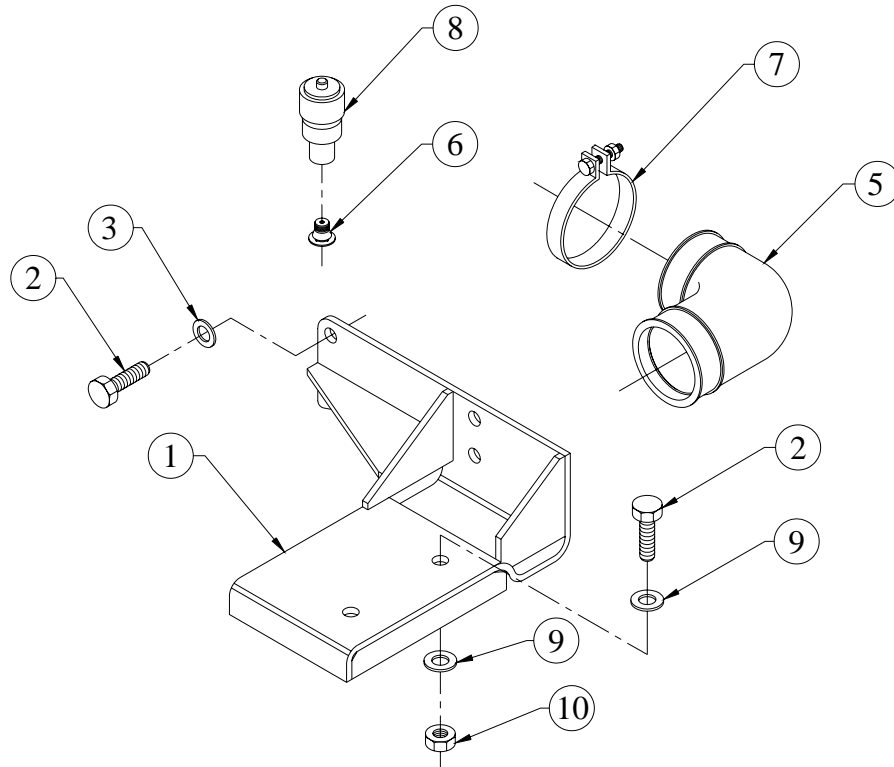
GROUP INDEX
APPLICATION CODE 3H.2084

SR.NO.	GROUP NO.	DESCRIPTION	QTY.	PAGE NO.
1	2H.127	AIR CLEANER (04.587) MOUNTING ARRANGMENT FOR 2R1040 ENGINE WITH ALLUMINIUM MANIFOLD	1	4
2	3H.312...EXP	AIR INLET MANIFOLD FOR PCV	1	5
3	04.367.1	ALTERNATOR (STAGE 1) MICO,12V55A	1	6
4	4H.198	ALTERNATOR MOUNTING AND BELT GUARD (TURBO)WITH 68PCD PULLEY SINGLE GROOVE	1	7, 8
5	04.587	ASSEMBLY OF DRY TYPE AIR CLEANER (KMFL KFA-01-1-7149) WITHOUT SAFETY ELEMENT	1	9
6	3H.003	CAMSHAFT	1	10
7	4H.266...EXP	COVER FOR FUEL PUMP GEAR (PG)	1	11
8	2H.034	CRANK PULLEY(SPA,SINGLE GR)PG	1	12
9	3H.002	CRANKSHAFT	1	13
10	3H.009	CYLINDER HEAD	1	14 TO 16
11	2H.008	CYLINDER LINER.(105 DIA)	3	17
12	2H.013...EXP	DELIVERY BODY	1	18
13	3H.024	DIP STICK	1	19
14	2H.124	ENGINE MOUNTING FOOT (FOR PACKING PURPOSE)	1	20
15	3H.084	ENGINE MOUNTING FOOT FOR PG FOR CENTRE HEIGHT 225	1	21
16	3H.016	EXHAUST MANIFOLD	1	22
17	02.322	EXHAUST SILENSER	1	23
18	46.357	EXPANSION BELLOW (2.5") AND MOUNTING	1	24
19	4H.038	FLYWHEEL HOUSING(SAE3-144.5)	1	25
20	04.039	FLYWHEEL(C-110 PTO & SP-111 PTO)	1	26
21	4H.179...EXP	FRONT COVER FOR PG APPLICATION	1	27
22	3H.022	FUEL FILTER MTG.	1	28, 29
23	3H.011	FUEL INJECTION PIPE	1	30
24	3H.032...EXP	FUEL INJECTION PUMP (PG APPLICATION)(WITH FIX SPEED ARRANGEMENT)	1	31, 32
25	3H.032.2	FUEL INJECTION PUMP(PG STAGE II)	1	33
26	2H.011	FUEL PUMP GEAR.	1	34
27	4H.1074...EXP	GEAR CASING WITH DEFLECTOR	1	35
28	4H.073.1	HOSE CONN.(PG RADIATOR,STAGE 1)	1	36
29	4H.237	INTERMEDIATE GEAR AND SUPPORT (FOR ENGINE W/O AUTO TIMER)	1	37
30	3H.192	L.O. COOLER & SPIN ON TYPE L.O. FILTER S/F HEATER	1	38, 39
31	3H.151	LEAK OFF PIPE FOR 20 & 25 KVA	1	40
32	4H.170	LIFTING HOOK (TURBO ENGINE)	1	41

SR.NO.	GROUP NO.	DESCRIPTION	QTY.	PAGE NO.
33	2H.092.1	LUBE OIL PR GAUGE SENDOR	1	42
34	3H.005	LUBE.OIL PUMP.	1	43, 44
35	2H.301	MICO STARTER 12VDC 2.7KW SUITABLE FOR 30*C	1	45
36	3H.001...EXP	MONOBLOCK CRANKCASE (S/F USA)	1	46 TO 50
37	4H.081.2	MTG.FOR RADIATOR (PG,STAGE2)	1	51
38	2H.023	NOZZLE & NOZZLE MTG.	3	52 TO 57
39	4H.027...EXP	OIL FILLING BODY	1	58, 59
40	2H.039...EXP	OIL SEAL HOUSING (PG)	1	60
41	03.829	OIL SUMP (PRESSED)	1	61
42	2H.009	PISTON & CON ROD ASSEMBLY	3	62, 63
43	2H.007	PUSHROD & TAPPETS	3	64
44	4H.083.2	RADIATOR FAN (430 DIA,PUSHER)	1	65
45	4H.083.1	RADIATOR FAN MTG.(STAGE 1,PG)	1	66
46	3H.217	RADIATOR FOR CANOPY GENSET W/O STONE GUARD (ONE STEP UP)	1	67
47	3H.057.30	RADIATOR SUPPORTR ASSEMBLY	1	68
48	02.359	RAIN CAP & MTG.	1	69
49	04.589	RAIN CAP AND MOUNTING S/F DRY TYPE PLASTIC AIR CLEANER (4.5 AND 6 CUBICM)	1	70
50	3H.313...EXP	ROCKER COVER (FOR PCV)	1	71
51	46.065.1	SENSOR FOR TEMPERATURE GAUGE	1	72
52	49.638	SPEED ADJUSTMENT ARRANGEMENT	1	73
53	3H.132	SPIN ON FUEL FILTER (MICO NO F002 H20 116)	1	74
54	3H.135.1	STOP SOLENOID ASSEMBLY 12V D.C. FOR MICO PUMP ENERGIES TO RUN WITHOUT TIMER	1	75
55	3H.006	SUCTION TUBE	1	76, 77
56	4H.053...EXP	THERMOSTAT & MTG.[USA]	1	78, 79
57	4H.069	V BELT (XPA 1250)	1	80
58	3H.010	VALVE ROCKER ASSLY.	1	81, 82
59	4H.052...EXP	WATER PUMP	1	83, 84
60	4H.005	WATER PUMP PULLEY (120 PCD,1,SPA)	1	85
61	46.260	WATER TEMP.SW.(95 DEG.+ - 3 DEG)	1	86
62	3H.166.05	SET OF JOINTS	1	87
63	3H.166.54	SET OF WASHERS	1	88
64	3H.166.06	SET OF 'O' RINGS	1	89
65	3H.166.82	SET OF HOSES	1	90

**TITLE :- AIR CLEANER (04.587) MOUNTING
ARRANGMENT FOR 2R1040 ENGINE
WITH ALLUMINIUM MANIFOLD**

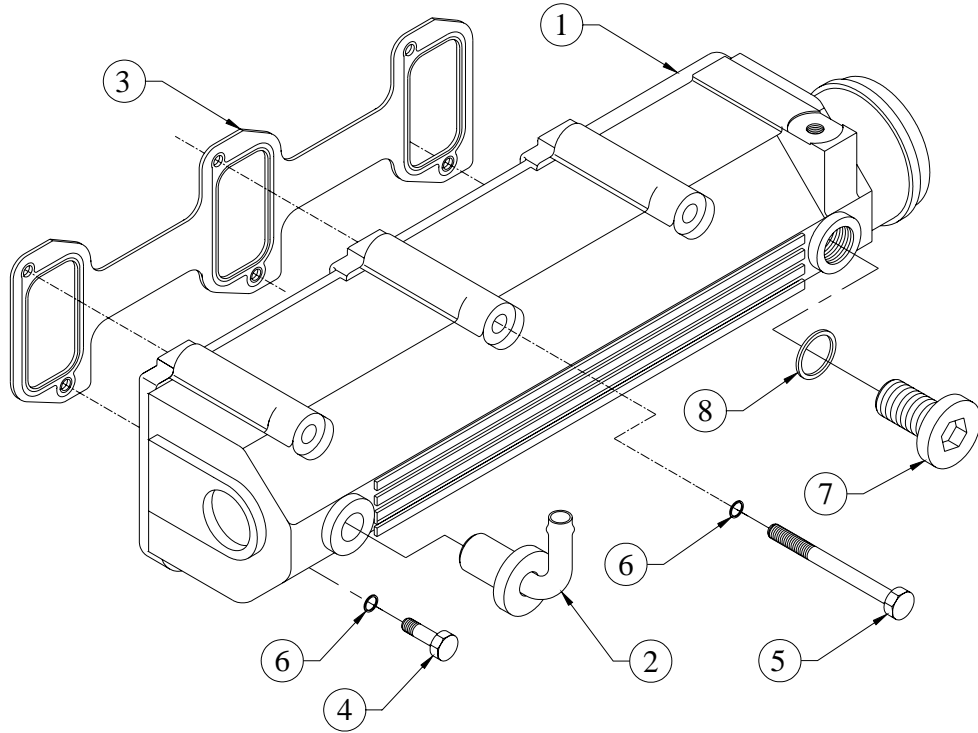
GROUP :- 2H.127



SR.NO.	PART NO.	DESCRIPTION	QTY.	REMARKS
1	4H.404.01.0.00	BRACKET FORT AIR CLEANER MOUNTING	1	
2	50.003.10.025	SET SCREW - M10X1.5X25 - 8.8	6	
3	50.506.10.000	PLAIN MACHINED WASHER - M10	4	
*4	4H.404.10.0.00	SUBASSEMBLY OF HOSE	1	CONSISTING OF SR. NO.- 5 & 6
5	4H.404.02.0.00	HOSE FOR AIR CLEANER	1	
6	04.588.03.0.00	ADAPTOR FOR RESTRICTION INDICATOR	1	
7	48.305.07.0.00	JUPITER WORM DRIVE CLAMP,TYPE 603,80mm DIA (S/F 80mm HOSE O.D.)	1	
8	04.588.05.0.00	RESTRICTION INDICATOR (M10 x 1.5)	1	
9	50.548.10.000	SPECIAL WASHER	4	
10	50.006.10.000	NUT - M10X1.5 - GR.8	2	

TITLE: - AIR INLET MANIFOLD FOR PCV

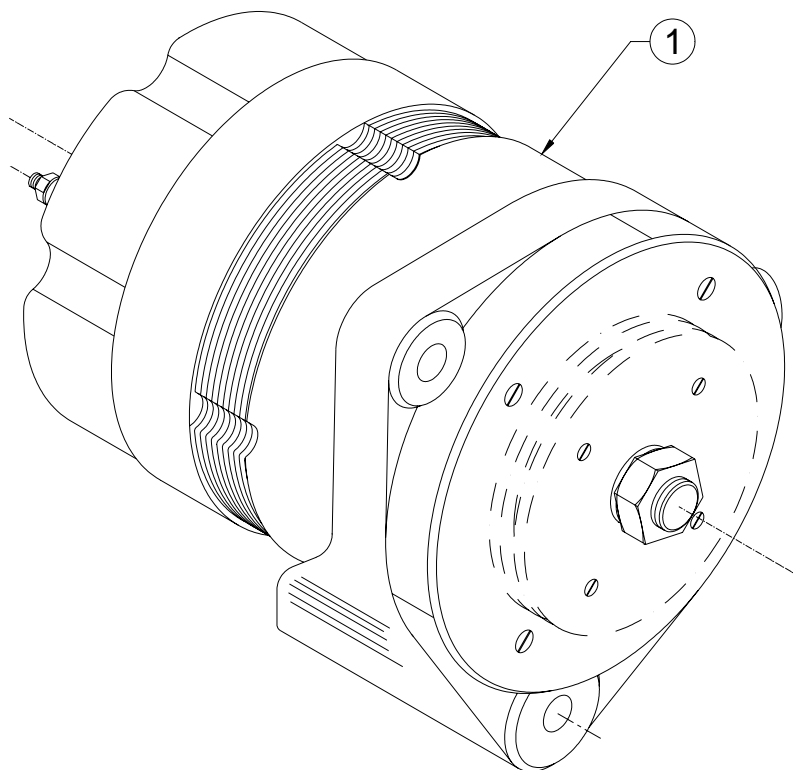
GROUP: - 3H.312...EXP



SR.NO.	PART NO.	DESCRIPTION	QTY.	REMARKS
1	3H.312.01.0.00	INLET MANIFOLD (MACHINING)	1	
2	2H.203.10.0.00	ASSEMBLY FOR BREATHER INLET	1	
3	3H.015.11.0.00	JOINT FOR AIR INLET MANIFOLD	1	
4	50.002.08.030.	SET BOLT - M8X1.25X30 - 8.8	3	
5	50.002.08.090.	SET BOLT - M8X1.25X90 - 8.8	3	
6	50.506.08.000.	PLAIN MACHINED WASHER - M8	6	
7	04.001.04.0.00	SCREW PLUG (M20 X 1.5)	1	
8	50.508.18.000.	COPPER WASHER (20X24)	1	

TITLE:- ALTERNATOR (STAGE 1)

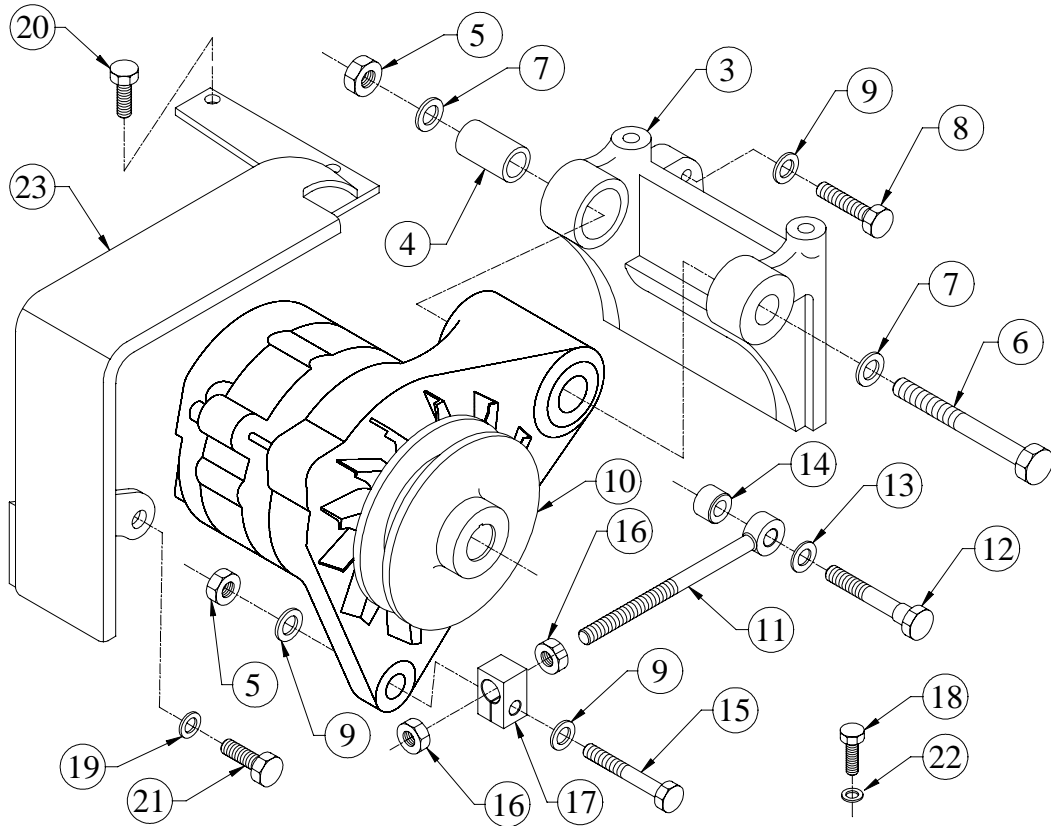
GROUP:- 04.367.1



SR.NO.	PART NO.	DESCRIPTION	QTY.	REMARKS
1	04.367.01.0.00	ALT.(MICO,12V55A)9 120 030 387	1	

TITLE :- ALTERNATOR MOUNTING AND BLT GAURD (TURBO)

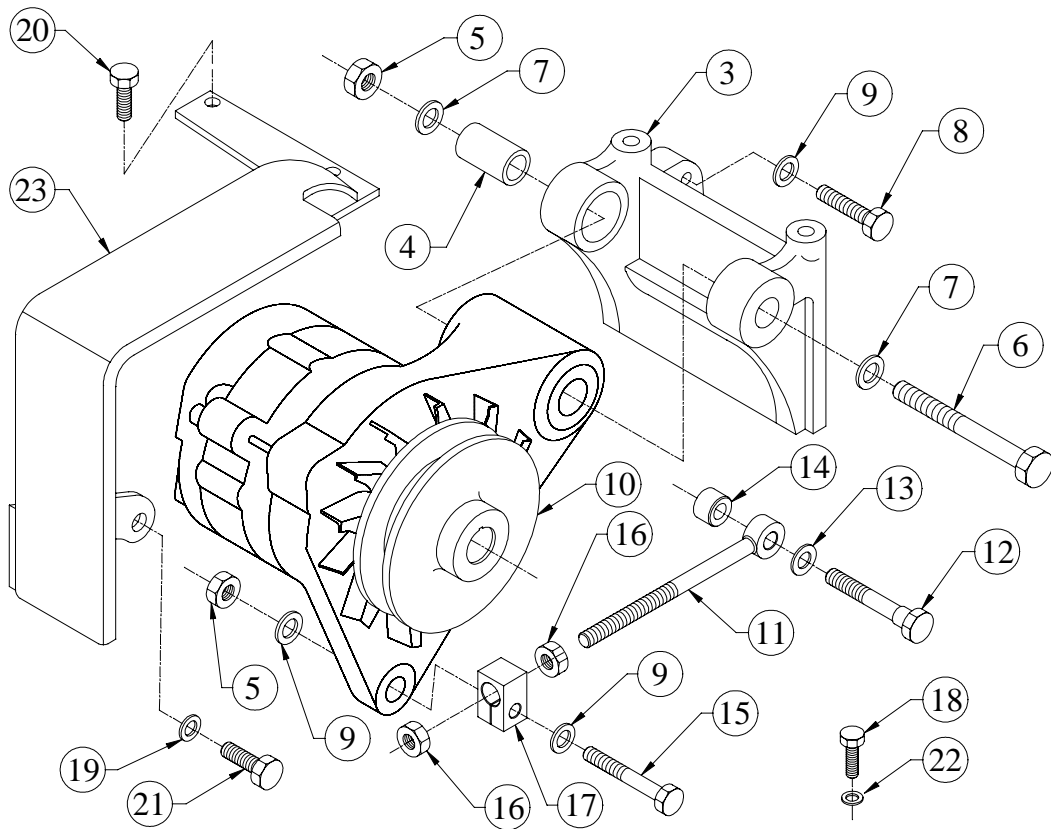
GROUP :- 4H.198



SR.NO.	PART NO.	DESCRIPTION	QTY.	REMARKS
*1	4H.198.10.0.00	ALTERNATOR MOUNTING KIT	1	CONSISTING OF SR. NO.- 2 8 TO 19
*2	4H.044.20.0.00	MOUNTING SUBASLY. FOR ALTERNATOR	1	CONSISTING OF SR. NO.- 3 TO 7
3	48.175.07.0.00	BKT.FOR ALT	1	
4	48.067.04.0.00	BUSH FOR ALTERNATOR (IN BRACKET)	1	
5	50.006.10.000.	NUT - M10X1.5 - GR.8	1	
6	48.067.03.7.00	DOWEL BOLT FOR ALTERNATOR	1	
7	50.506.10.000.	PLAIN MACHINED WASHER - M10	2	
8	50.003.10.040.	SET SCREW - M10X1.5X40 - 8.8	2	
9	50.506.10.000.	PLAIN MACHINED WASHER - M10	6	
10	3H.041.02.0.00	PULLEY FOR ALTERNATOR (SPA 68 PCD)	1	
11	4H.329.24.0.00	EYE BOLT	1	
12	4H.198.02.0.00	LOCATING BOLT (FOR EYE BOLT)	1	
13	50.506.12.000.	PLAIN MACHINED WASHER - M12	1	
14	4H.198.03.0.00	SPACER (FOR EYE BOLT)	1	

TITLE :- ALTERNATOR MOUNTING AND BLT GAURD (TURBO)

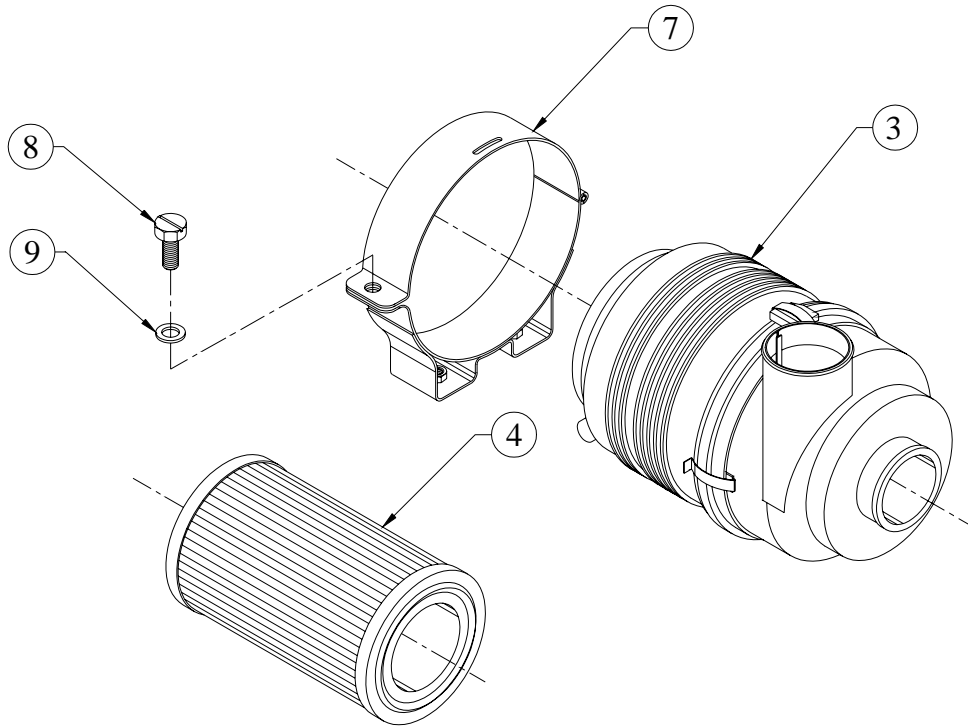
GROUP :- 4H.198



SR.NO.	PART NO.	DESCRIPTION	QTY.	REMARKS
15	50.002.10.055.	SET BOLT - M10X1.5X55 - 8.8	1	
16	50.006.10.000.	NUT - M10X1.5 - GR.8	2	
17	4H.329.26.0.00	SWIVEL PIECE	1	
18	50.003.08.018.	SET SCREW - M8X1.25X18 - 8.8	1	
19	50.506.08.000.	PLAIN MACHINED WASHER - M8	1	
20	50.003.06.012.	SET SCREW - M6X1X12 - 8.8	2	
21	50.003.08.020.	SET SCREW - M8X1.25X20 - 8.8	1	
22	50.506.08.000.	PLAIN MACHINED WASHER - M8	3	
23	4H.198.04.0.00	BELT GUARD	1	

TITLE :- ASSEMBLY OF DRY TYPE AIR CLEANER (KMFL KFA-01-1-7149) WITHOUT SAFETY ELEMENT

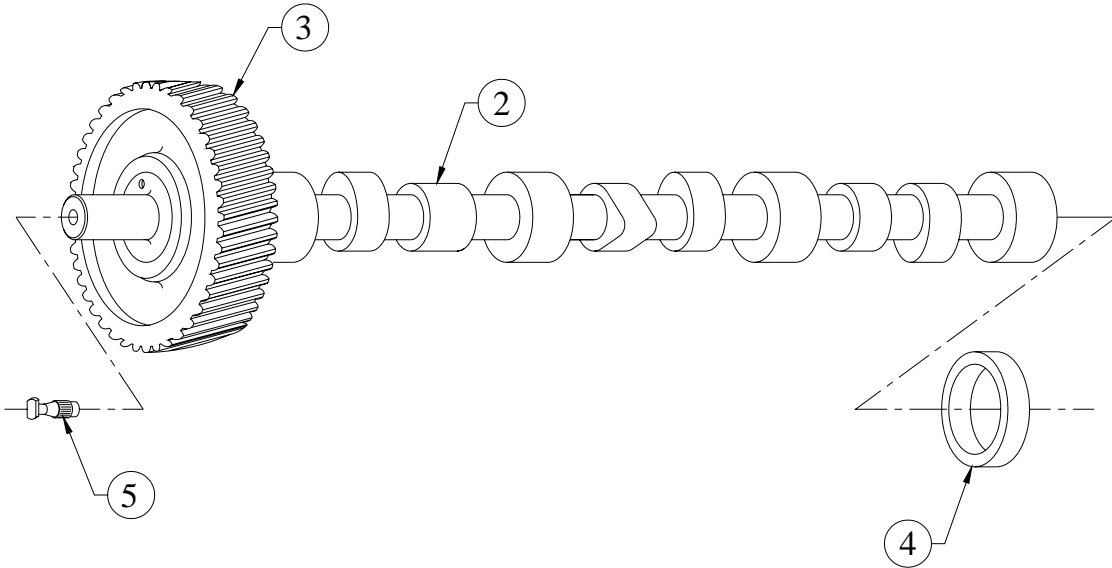
GROUP :- 04.587



SR.NO.	PART NO.	DESCRIPTION	QTY.	REMARKS
*1	04.587.20.0.00	ASSEMBLY OF AIR CLEANER (AIR CLEANER + STRAP)	1	CONSISTING OF SR. NO. 2 & 6
*2	04.587.10.0.00	ASSEMBLY OF DRY TYPE AIR CLEANER WITHOUT SAFETY ELEMENT	1	CONSISTING OF SR. NO. 3 TO 5
3	04.586.02.0.00	AIR CLEANER HOUSING	1	
4	04.586.03.0.00	MAIN ELEMENT FOR AIR CLEANER	1	
*5	04.586.05.0.00	VACUATOR VALVE FOR AIR CLEANER	1	NOT ILLUSTRATED
*6	04.586.20.0.00	ASSEMBLY OF STRAP FOR DRY TYPE AIR CLEANER (04.586/04.587)	1	CONSISTING OF SR. NO. 7 TO 9
7	04.586.01.0.00	MOUNTING STRAP FOR DRY TYPE AIR CLEANER (04.586/04.587)	1	
8	50.003.08.010	SET SCREW - M8X1.25X10 - 8.8	1	
9	50.506.08.000	PLAIN MACHINED WASHER - M8	1	

TITLE :- CAMSHAFT

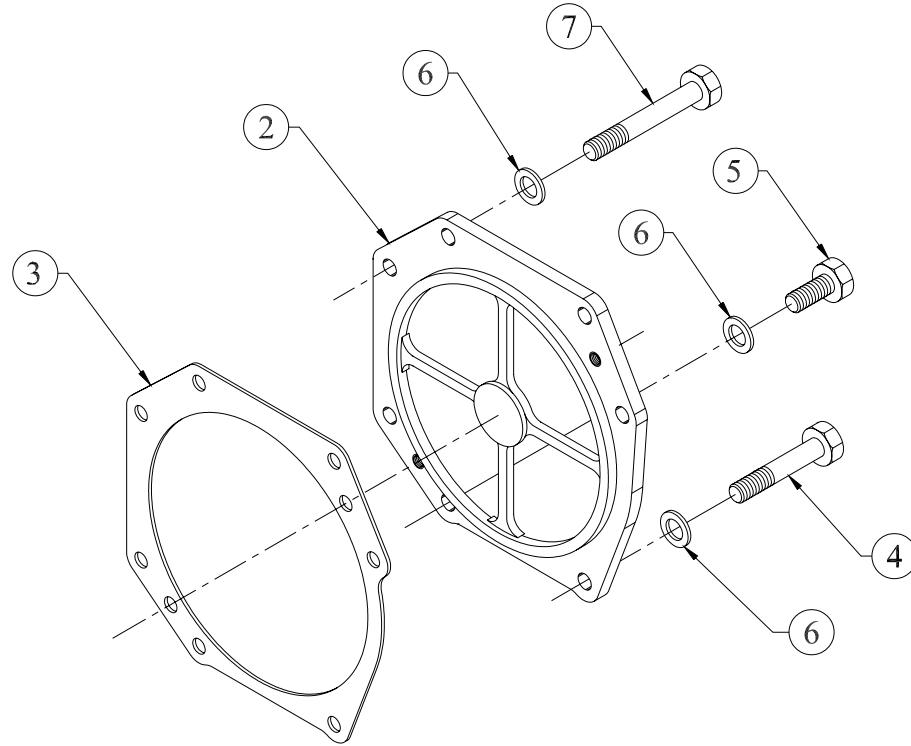
GROUP :- 3H.003



SR.NO.	PART NO.	DESCRIPTION	QTY.	REMARKS
*1	3H.003.10.0.00	SUB ASSEMBLY OF CAM SHAFT	1	CONSISTING OF SR. NO.- 2 & 3
2	3H.003.01.0.00	CAMSHAFT	1	
3	03.006.04.0.00	CAMSHAFT GEAR	1	
4	4H.003.02.0.00	THRUST WASHER FOR CAMSHAFT	1	
5	03.117.02.0.00	PIN FOR TACHOMETER	1	

TITLE :- COVER FOR FUEL PUMP GEAR (PG)

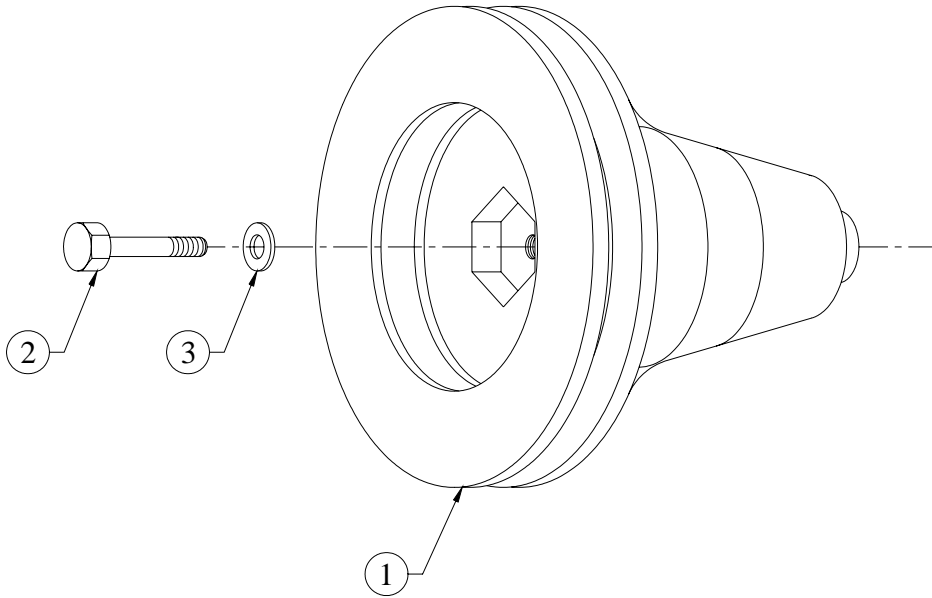
GROUP :- 4H.266...EXP



SR.NO.	PART NO.	DESCRIPTION	QTY.	REMARKS
*1	4H.266.10.0.00	COVER FOR FUEL PUMP GEAR WITH JOINT (USA)	1	CONSISTING OF SR NO.- 2 & 3
2	2H.017.03.0.00	COVER FOR FUEL PUMP GEAR	1	
3	2H.017.11.0.00	JOINT FOR FUEL PUMP GEAR	1	
4	50.002.08.045	SET BOLT - M8X1.25X45 - 8.8	3	
5	50.003.08.020	SET SCREW - M8X1.25X20 - 8.8	2	
6	50.506.08.000	PLAIN MACHINED WASHER - M8	7	
7	50.002.08.065	SET BOLT - M8X1.25X65 - 8.8	2	

TITLE :- CRANK PULLEY (SPA SINGLE GROOVE) PG

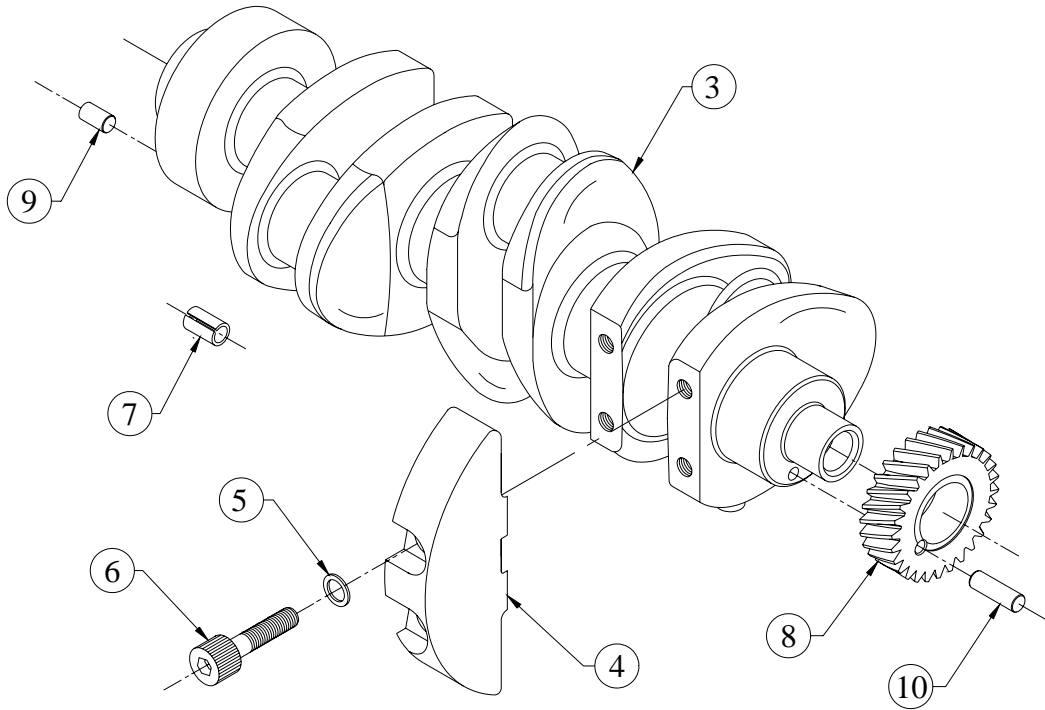
GROUP :- 2H.034



SR.NO.	PART NO.	DESCRIPTION	QTY.	REMARKS
1	2H.034.01.0.00	CRANK PULLEY (SPA SINGLE GROOVE) PG	1	
2	03.016.02.0.00	CRANK PULLY BOLT-UPDATED	1	
3	03.016.03.0.00	WASHER (FOR CRANK PULLY BOLT)-UPDATED	1	

TITLE :- CRANK SHAFT

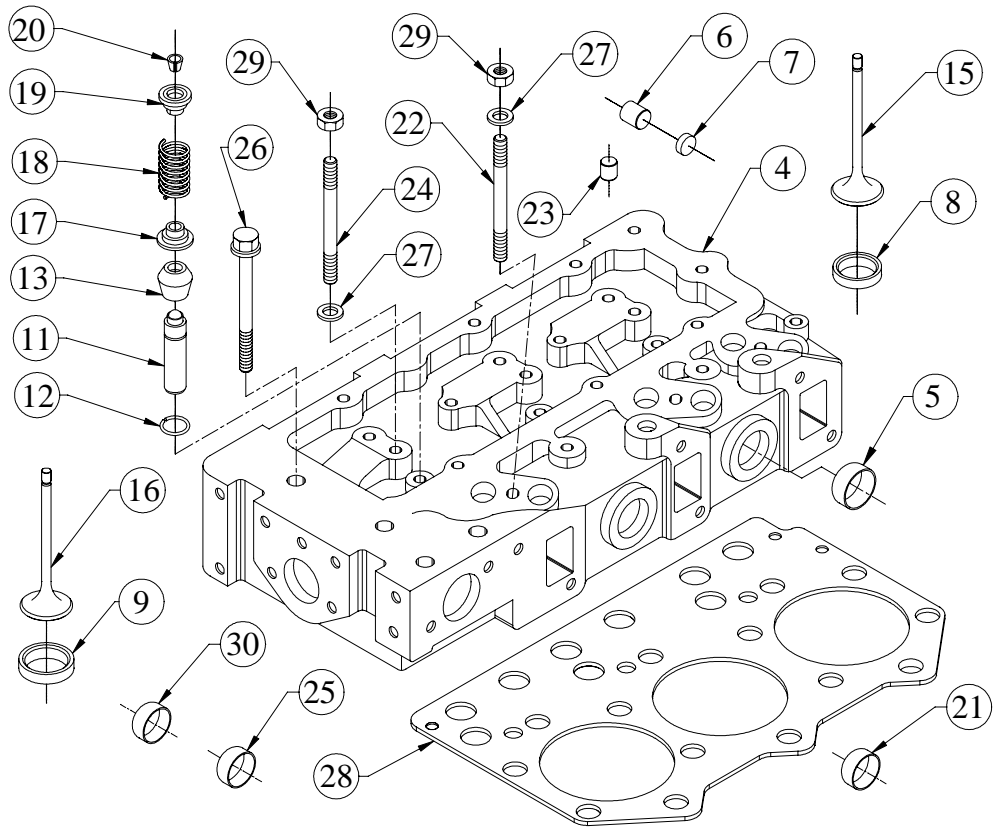
GROUP :- 3H.002



SR.NO.	PART NO.	DESCRIPTION	QTY.	REMARKS
*1	3H.002.10.0.00	CRANKSHAFT ASSLY. WITH GEAR	1	CONSISTING OF SR. NO.- 2, 8 TO 10
*2	03.005.20.0.00	CR'SHAFT ASSLY.W/O CR'GEAR(UPGRADED)	1	CONSISTING OF SR. NO.- 3 TO 7
3	03.005.08.0.00	HA3 CRANKSHAFT FINISHED EN 9 & SINGLE OIL HOLE	1	
4	03.005.07.0.00	COUNTER WEIGHT-FINISHED	4	
5	02.005.04.0.00	WASHER	8	
6	04.005.12.0.00	SOCKET HEAD BOLT - M12X1.75X60 -10.9	8	
7	50.540.11.018	SPRING DOWEL	1	
8	4H.002.01.0.00	CRANK SHAFT GEAR (FINISH/)	1	
9	50.401.08.025	DOWEL PIN 8X25	1	
10	50.401.08.060	DOWEL PIN 8X60	1	

TITLE: -CYLINDER HEAD

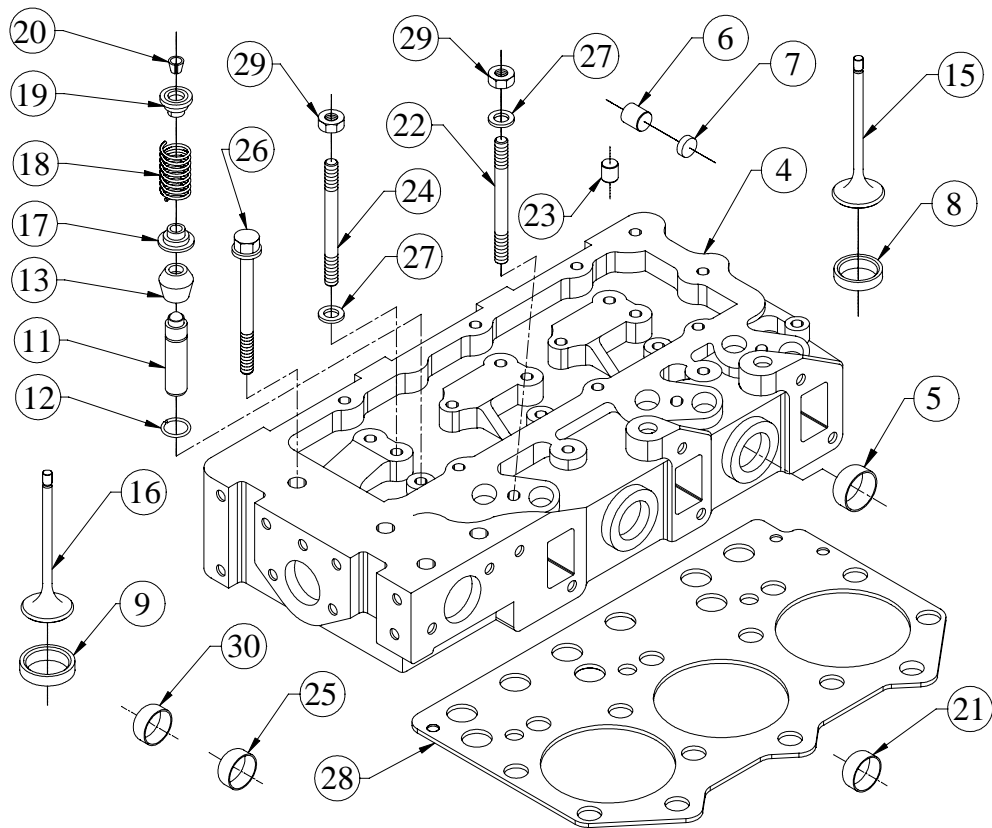
GROUP: - 3H.009



SR.NO.	PART NO.	DESCRIPTION	QTY.	REMARKS
*1	3H.009.30.0.00	CYL. HEAD WITH CORE PLUGS	1	CONSISTING OF SR. NO.- 2, 13 TO 24
*2	3H.009.20.0.00	CYL. HEAD WITH VALVE GUIDE & VALVE SEAT INSERTS	1	CONSISTING OF SR. NO.- 3, 8 TO 10
*3	3H.009.10.0.00	CYLINDER HEAD ASSLY. - (COMPLETE)	1	CONSISTING OF SR. NO.- 4 TO 7
4	3H.009.01.0.00	CYLINDER HEAD	1	
5	F6.001.58.0.00	SEALING CAP.(40 DIN 443)	3	
6	34.003.07.0.00	CRANK SHAFT PLUG – ALUMINIUM	4	
7	34.003.08.0.00	WASHER FOR ALU.PLUG.	4	
8	4H.007.03.9.00	VALVE SEAT INSERT (INLET)	3	
9	4H.007.04.9.00	VALVE SEAT INSERT (EXHAUST)	3	
*10	4H.007.38.0.00	ASSEMBLY OF SEMIFINISH VALVE GUIDE & SNAP RING	6	CONSISTING OF SR. NO.- 11 & 12
11	4H.007.02.9.00	VALVE GUIDE (SEMI-FINISH)	1	

TITLE: -CYLINDER HEAD

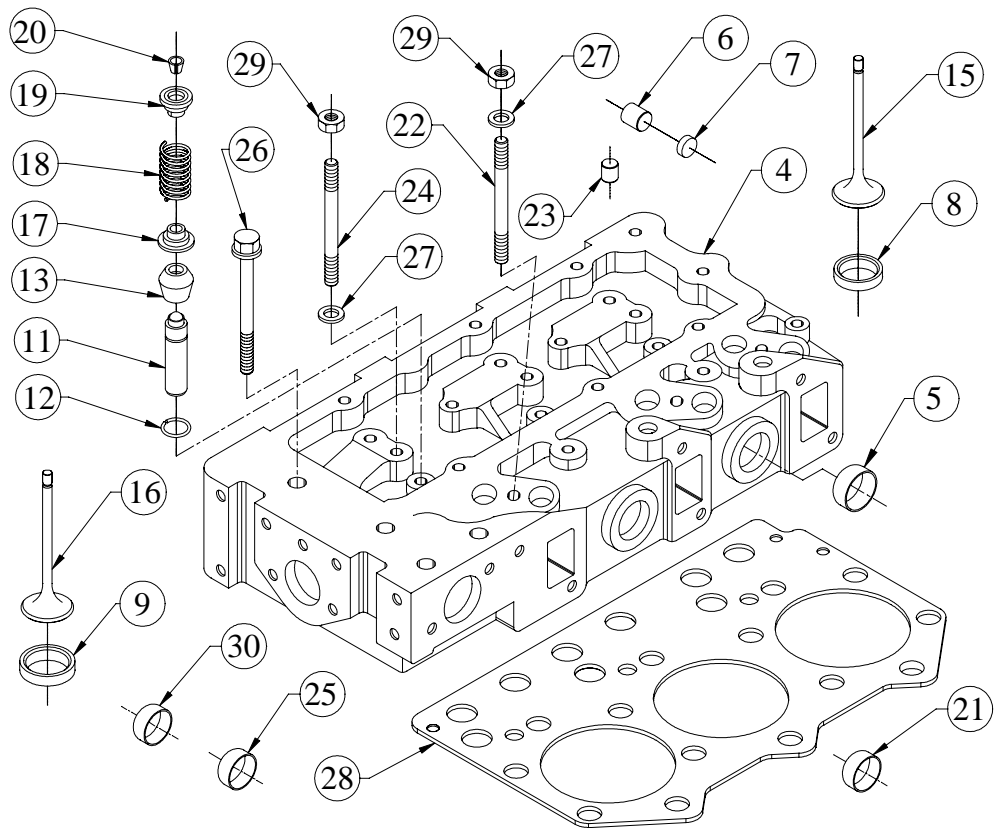
GROUP: - 3H.009



SR.NO.	PART NO.	DESCRIPTION	QTY.	REMARKS
12	02.022.18.0.00	WIRE SNAP RING	1	
13	06.631.02.0.00	VALVE SEAL	6	
*14	4H.007.40.0.00	INLET & EXHAUST VALVE PAIR		CONSISTING OF SR. NO.- 15 & 16
15	4H.007.05.0.00	INLET VALVE.	3	
16	4H.007.06.0.00	EXHAUST VALVE.	3	
17	34.013.13.0.00	CUP FOR VALVE SPRING.	6	
18	02.022.13.0.00	VALVE SPRING	6	
19	02.022.11.0.00	VALVE CUP	6	
20	02.022.12.0.00	VALVE COLLET	12	
21	F6.001.58.0.00	SEALING CAP. (40 DIN 443)	1	
22	50.010.10.050	STUD - M10X1.5X50 - 8.8	3	
23	4H.007.08.0.00	BUTTON FOR INJECTOR YOKE.	3	
24	50.010.10.070	STUD - M10X1.5X70 - 8.8	3	
25	F6.001.58.0.00	SEALING CAP.(40 DIN 443)	1	
26	4H.007.07.0.00	BOLT FOR CYLINDER HEAD.	14	
27	50.506.10.000	PLAIN MACHINED WASHER - M10	6	
28	3H.009.06.0.00	GASKET FOR CYL.HEAD (1.22 MM)	1	

TITLE: -CYLINDER HEAD

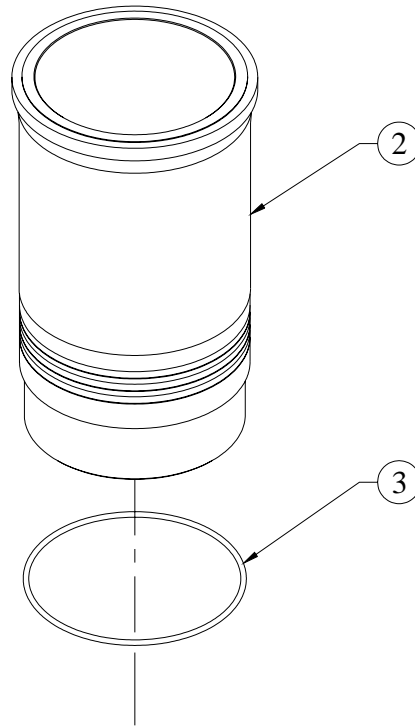
GROUP: - 3H.009



SR.NO.	PART NO.	DESCRIPTION	QTY.	REMARKS
29	50.006.10.000.	NUT - M10X1.5 - GR.8	6	
30	4H.007.37.0.00	PLASTIC CAP FOR VALVE GUIDE PROTECTION	6	

TITLE:- CYLINDER LINER (105 DIA)

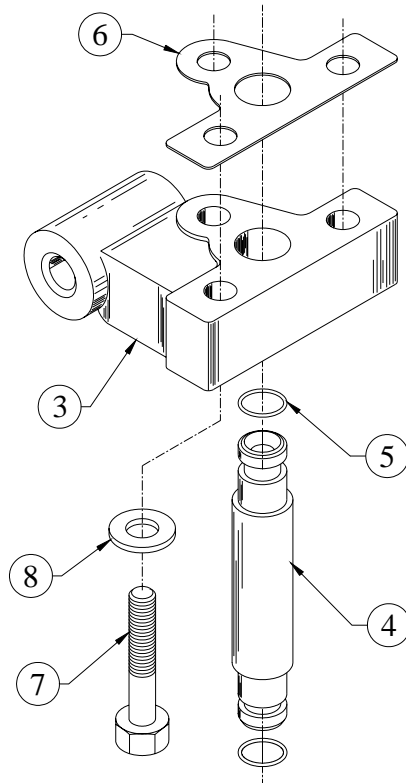
GROUP:- 2H.008



SR.NO.	PART NO.	DESCRIPTION	QTY.	REMARKS
*1	2H.008.10.0.00	CYLINDER WITH 'O' RING	1	CONSISTING OF SR. NO. 2 & 3
2	2H.008.01.0.00	CYLINDER LINER (105mm DIA.) A-GROUP	1	
3	2H.008.07.0.00	O RING (FOR CYL.LINER)	3	

TITLE:- DELIVERY BODY

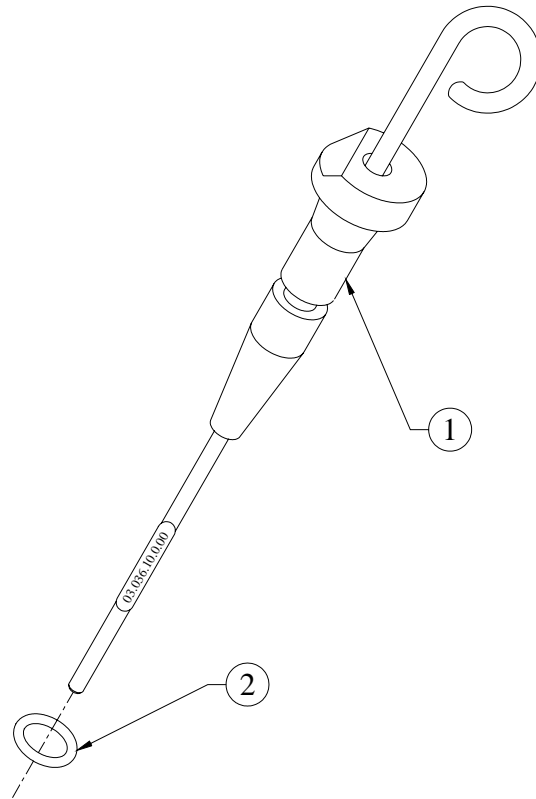
GROUP:- 2H.013...EXP



SR.NO.	PART NO.	DESCRIPTION	QTY.	REMARKS
*1	2H.013.20.0.00	DELIVERY BODY AND JOINT (NON ASBESTOS)	1	CONSISTING OF SR. NO. 2 & 6
*2	2H.013.10.0.00	DELIVERY BODY ASSEMBLY	1	CONSISTING OF SR. NO. 3 TO 5
3	2H.013.01.0.00	DELIVERY BODY (FINISH)	1	
4	2H.014.01.0.00	DELIVERY TUBE	1	
5	2H.014.02.0.00	O RING(FOR DELIVERY TUBE)	2	
6	2H.013.11.0.00	JOINT FOR DELIVERY BODY	1	
7	50.002.08.045.	SET BOLT - M8X1.25X45 - 8.8	3	
8	50.506.08.000.	PLAIN MACHINED WASHER - M8	3	

TITLE :- DIP STICK

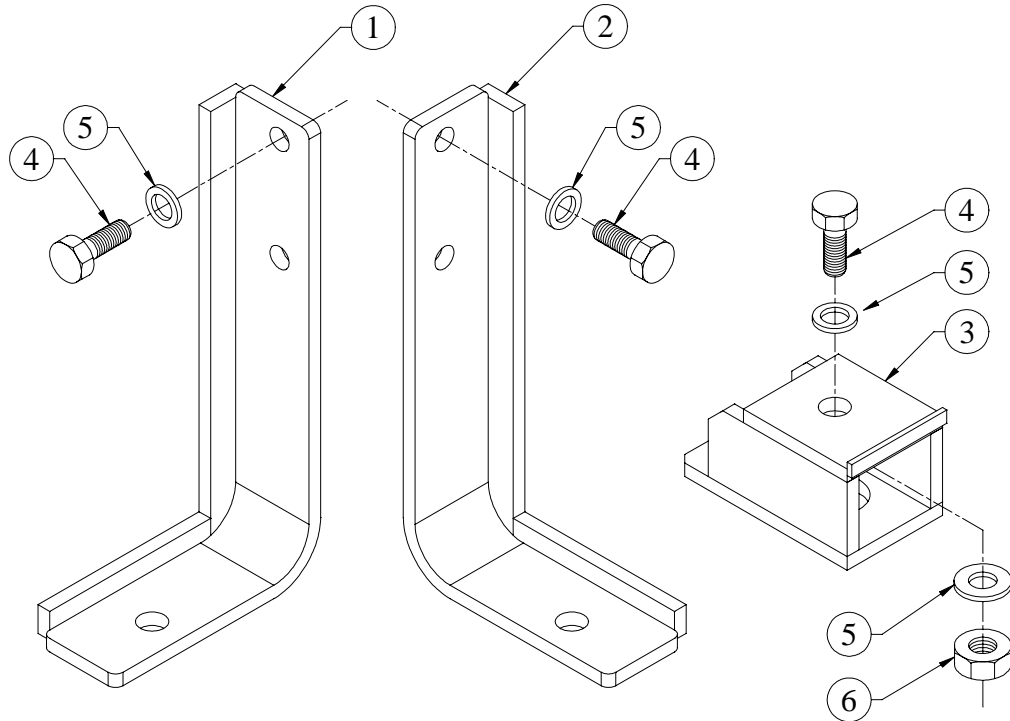
GROUP :- 3H.024



SR.NO.	PART NO.	DESCRIPTION	QTY.	REMARKS
1	3H.024.10.0.00	DIPSTICK ASSLY.	1	
2	03.036.01.0.00	O RING - DIPSTICK (2X5,21515 OR 21511)	1	

**TITLE: - ENGINE MTG. FOOT
FOR PACKING PURPOSE**

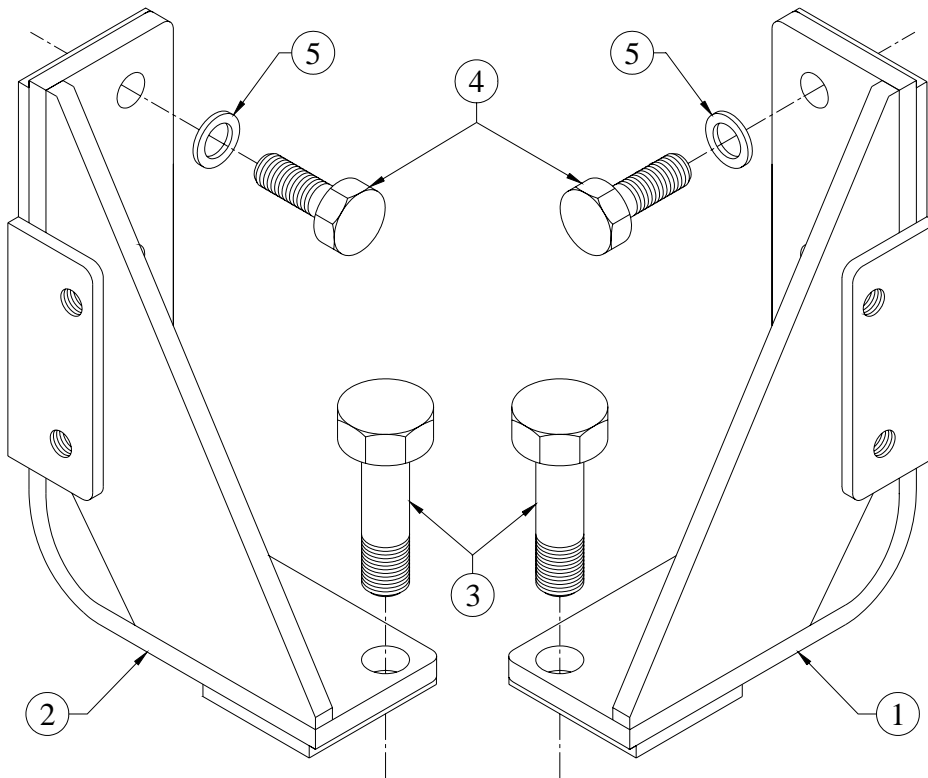
GROUP: - 2H.124



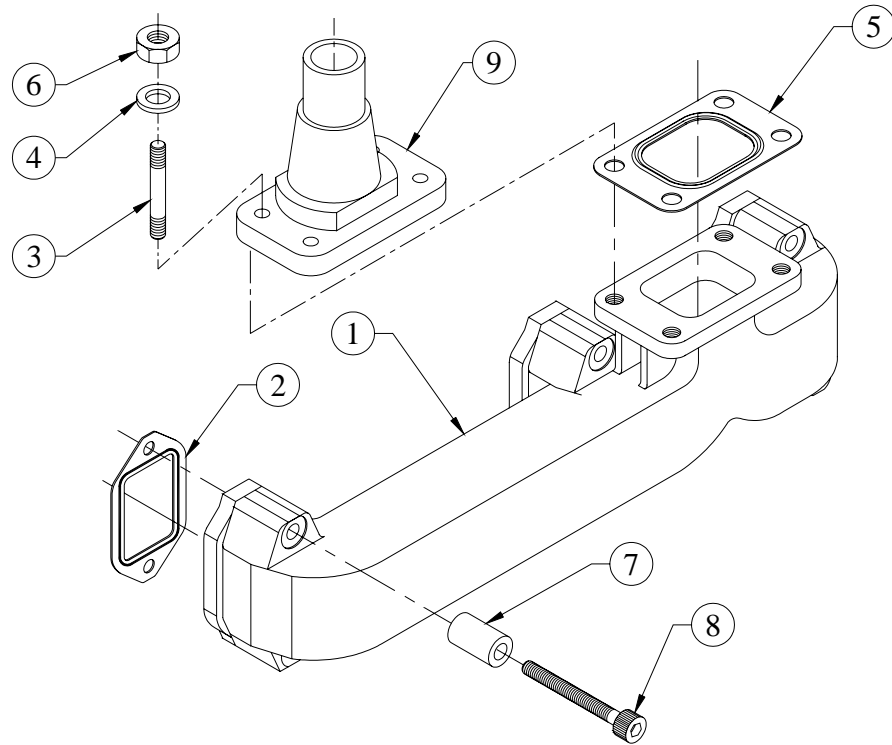
SR.NO.	PART NO.	DESCRIPTION	QTY.	REMARKS
1	2H.124.03.0.00	CRANK CASE FOOT (GEAR END), FUEL PUMP SIDE	1	
2	2H.124.04.0.00	CRANK CASE FOOT (GEAR END), STARTER SIDE	1	
3	2H.124.05.0.00	SUPPORT FOR MOUNTING FOOT	2	
4	50.003.12.030.	SET SCREW - M12X1.75X30 - 8.8	6	
5	50.506.12.000.	PLAIN MACHINED WASHER - M12	8	
6	50.006.12.000.	NUT - M12X1.75 - GR.8	2	

**TITLE :- ENGINE MOUNTING FOOT FOR PG
FOR CENTRE HEIGHT 225**

GROUP :- 3H.084



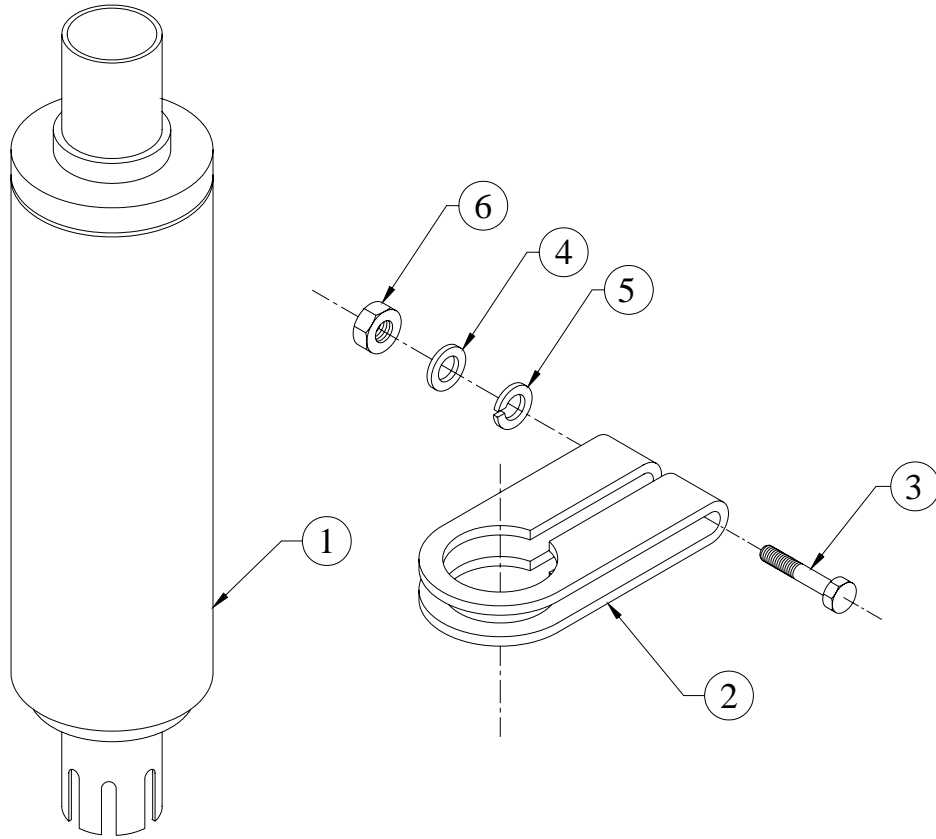
SR.NO.	PART NO.	DESCRIPTION	QTY.	REMARKS
1	3H.084.01.0.00	ENGINE MOUNTING FOOT FOR PG (STARTER SIDE)	1	
2	3H.084.02.0.00	ENGINE MOUNTING FOOT FOR PG (FUEL PUMP SIDE)	1	
3	50.004.16.060	SET BOLT - M16X1.5X60 - 8.8	4	
4	50.003.12.035	SET SCREW - M12X1.75X35 - 8.8	4	
5	02.005.04.0.00	WASHER	4	

TITLE :- EXHAUST MANIFOLD**GROUP :- 3H.016**

SR.NO.	PART NO.	DESCRIPTION	QTY.	REMARKS
1	3H.016.04.0.00	EXHAUST MANIFOLD	1	
2	4H.035.06.0.00	GASKET (FOR EXHAUST MANIFOLD)	3	
3	50.010.10.025.	STUD - M10X1.5X25 - 8.8	4	
4	50.506.10.000.	PLAIN MACHINED WASHER - M10	4	
5	4H.035.03.0.00	GASKET (FOR EXHAUST ADAPTOR)	1	
6	50.080.10.000.	STAINLESS STEEL NUT M10 AISI-304	4	
7	4H.107.02.0.00	SPACER(FOR EXT.MANIFOLD)	6	
8	50.011.08.075.	SOCKET HEAD SCREW - M8X1.25X75 - 8.8	6	
9	3H.016.02.0.00	ADAPTOR FOR EXHAUST SILENCER	1	

TITLE :- EXHAUST SILENCER

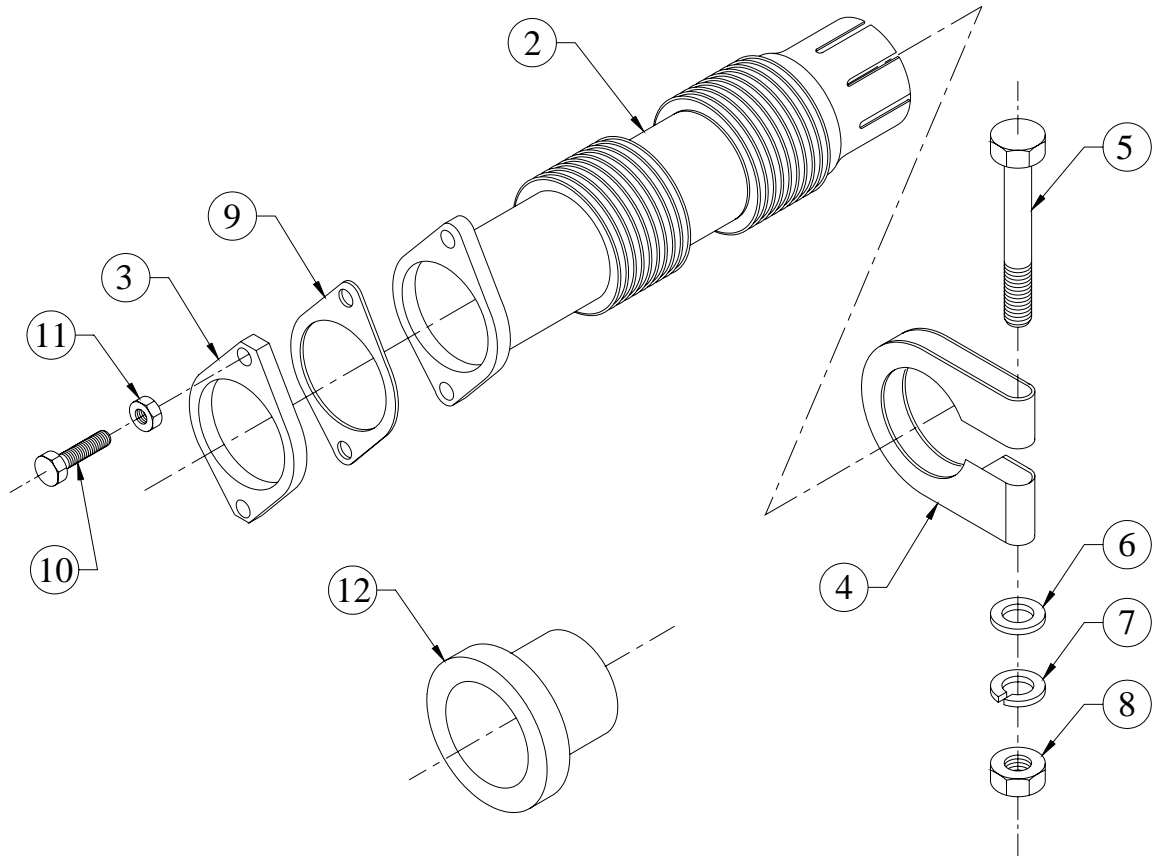
GROUP :- 02.322



SR.NO.	PART NO.	DESCRIPTION	QTY.	REMARKS
1	02.322.01.0.00	EXH.SILENCER	1	
2	46.256.05.0.00	SILENCER CLAMP	1	
3	50.002.08.090.	SET BOLT - M8X1.25X90 - 8.8	1	
4	50.506.08.000.	PLAIN MACHINED WASHER - M8	1	
5	50.505.08.000.	SPRING WASHER - M8	1	
6	50.006.08.000.	NUT- M8X1.25 - GR.8	1	

TITLE :- EXPANSION BELLOW (2.5") & MTG.

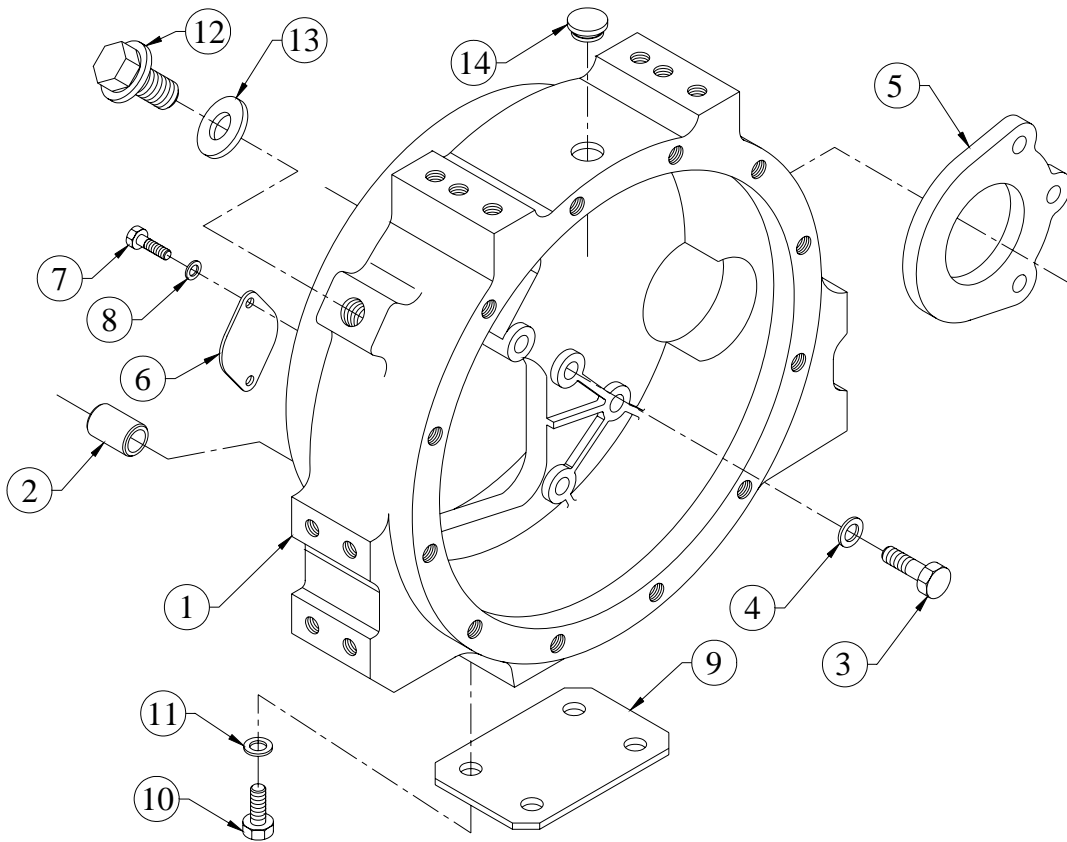
GROUP :- 46.357



SR.NO.	PART NO.	DESCRIPTION	QTY.	REMARKS
*1	46.357.10.0.00	EXPANSION BELLOW ASSLY 2.5"	1	CONSISTING OF SR. NO.- 2 & 3
2	46.357.01.0.00	EXPANSION BELLOW 2.5"	1	
3	46.357.02.0.00	FLANGE FOE EXPANSION BELLOW 2.5"	1	
4	46.256.05.0.00	SILENSER CLAMP	1	
5	50.002.08.090.	SET BOLT - M8X1.25X90 - 8.8	1	
6	50.506.08.000.	PLAIN MACHINED WASHER - M8	1	
7	50.505.08.000.	SPRING WASHER - M8	1	
8	50.006.08.000.	NUT- M8X1.25 - GR.8	1	
9	34.107.06.0.00	JOINT FOR ADAPTOR ON EX.M'FOLD	1	
10	50.003.08.035.	SET SCREW - M8X1.25X35 - 8.8	2	
11	02.022.24.0.00	NUT(BRASS)	2	
12	46.367.03.0.00	SLEEVE FOR EXHAUST SILENCER(55.2 DIA)	1	

TITLE: - FLYWHEEL HOUSING (SAE3-144.5)

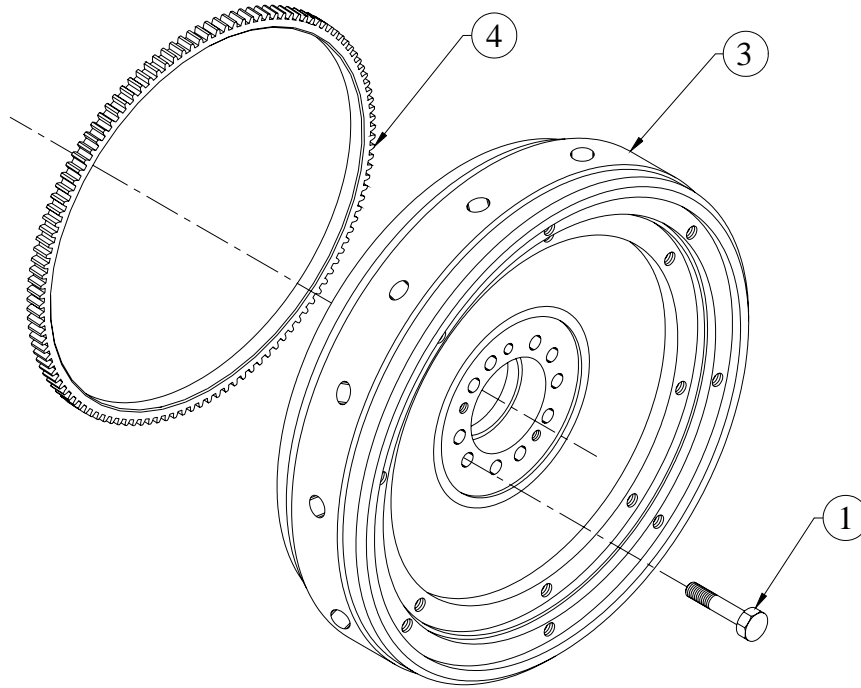
GROUP: - 4H.038



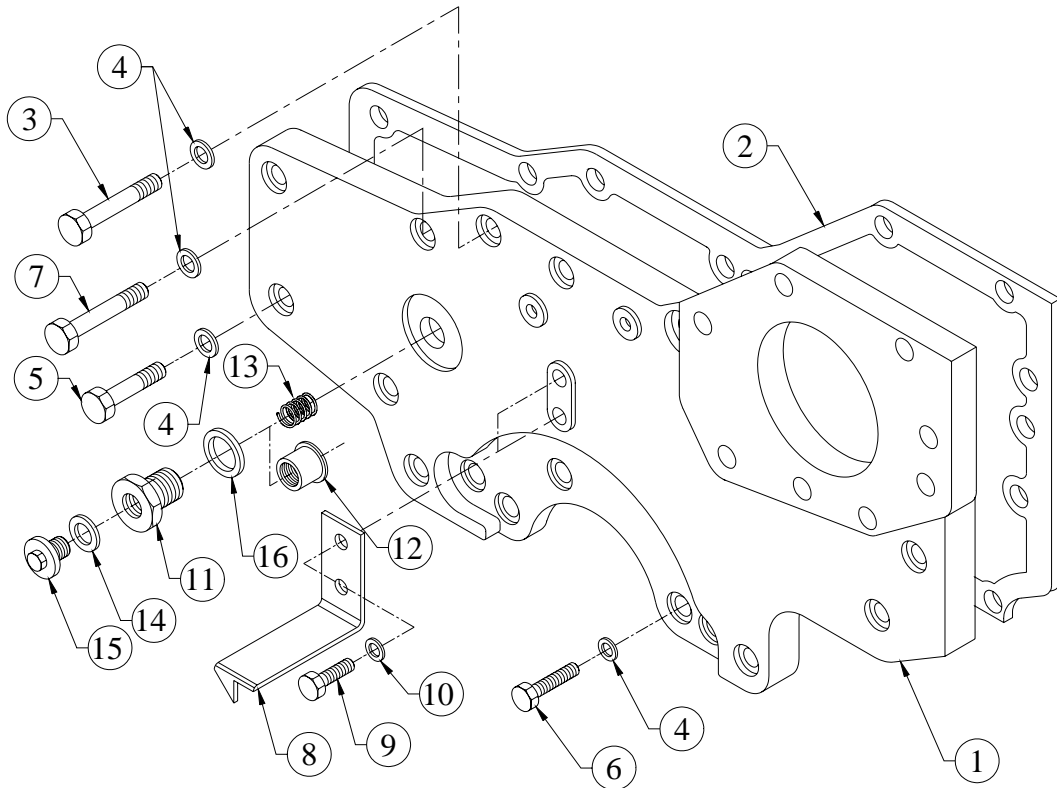
SR.NO.	PART NO.	DESCRIPTION	QTY.	REMARKS
1	4H.038.01.0.00	FLYWHEEL HOUSING (SAE3 -144.5)	1	
2	4H.001.13.0.00	HOLLOW DOWEL (16 DIA)	2	
3	50.052.10.030.	SET BOLT-M10X30-10.9	10	
4	02.024.09.0.00	WASHER	10	
5	4H.038.02.0.00	FLANGE FOR STARTER.	1	
6	4H.038.04.0.00	BLANKING PLATE (FOR FLYWHEEL HOUSING)	1	
7	50.003.06.012.	SET SCREW - M6X1X12 - 8.8	2	
8	50.506.06.000.	PLAIN MACHINED WASHER - M6	2	
9	03.086.02.0.00	COVER FOR FLY WHEEL HSG	1	
10	50.003.08.016.	SET SCREW - M8X1.25X16 - 8.8	4	
11	50.506.08.000.	PLAIN MACHINED WASHER - M8	4	
12	50.602.16.000.	CORE PLUG 16X1.5	1	
13	50.508.15.000.	COPPER WASHER (17X23)	1	
14	F6.016.12.0.00	RUBBER CAP.	1	

TITLE: -FLYWHEEL (C-110 PTO & SP-111 PTO)

GROUP: - 04.039



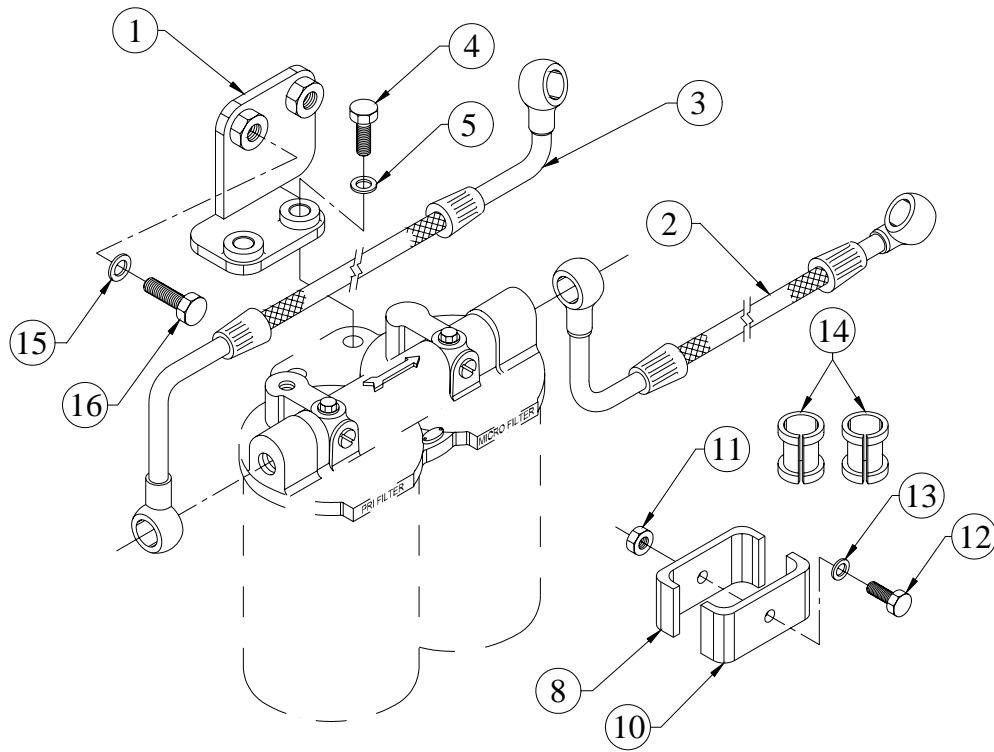
SR.NO.	PART NO.	DESCRIPTION	QTY.	REMARKS
1	03.050.02.0.00	FLYWHEEL BOLT (M10X50)	10	
*2	04.039.10.0.00	FLYWHEEL ASSLY	1	CONSISTING OF SR. NO.- 3 & 4
3	04.039.01.0.00	FLYWHEEL (C-110 PTO & SP-111 PTO)	1	
4	03.035.02.0.00	STARTER RING HA	1	

TOTAL: - FRONT COVER FOR PG APPLICATION**GROUP: - 4H.179...EXP**

SR.NO.	PART NO.	DESCRIPTION	QTY.	REMARKS
1	4H.179.01.0.00	FRONT COVER(W/O HYD. PUMP MNTG.)	1	
2	2H.037.11.0.00	JOINT (FRONT COVER)	1	
3	50.002.08.100.	SET BOLT - M8X1.25X100 - 8.8	4	
4	50.506.08.000.	PLAIN MACHINED WASHER - M8	18	
5	50.002.08.030.	SET BOLT - M8X1.25X30 - 8.8	4	
6	50.003.08.025.	SET SCREW - M8X1.25X25 - 8.8	5	
7	50.002.08.035.	SET BOLT - M8X1.25X35 - 8.8	5	
8	2H.037.06.0.00	TIMING POINTER	1	
9	50.003.06.012.	SET SCREW - M6X1X12 - 8.8	2	
10	50.506.06.000.	PLAIN MACHINED WASHER - M6	2	
11	03.117.04.0.00	ADAPTOR (FOR TD UNIT)	1	
12	03.014.07.0.00	CUP FOR SPRING	1	
13	03.014.06.0.00	SPRING FOR CUP	1	
14	50.508.27.000.	COPPER WASHER (24X29)	1	
15	34.001.11.0.00	DRAIN PLUG (F)	1	
16	50.508.16.000	COPPER WASHER (18 X 22)	1	

TITLE :- FUEL FILTER MTG.

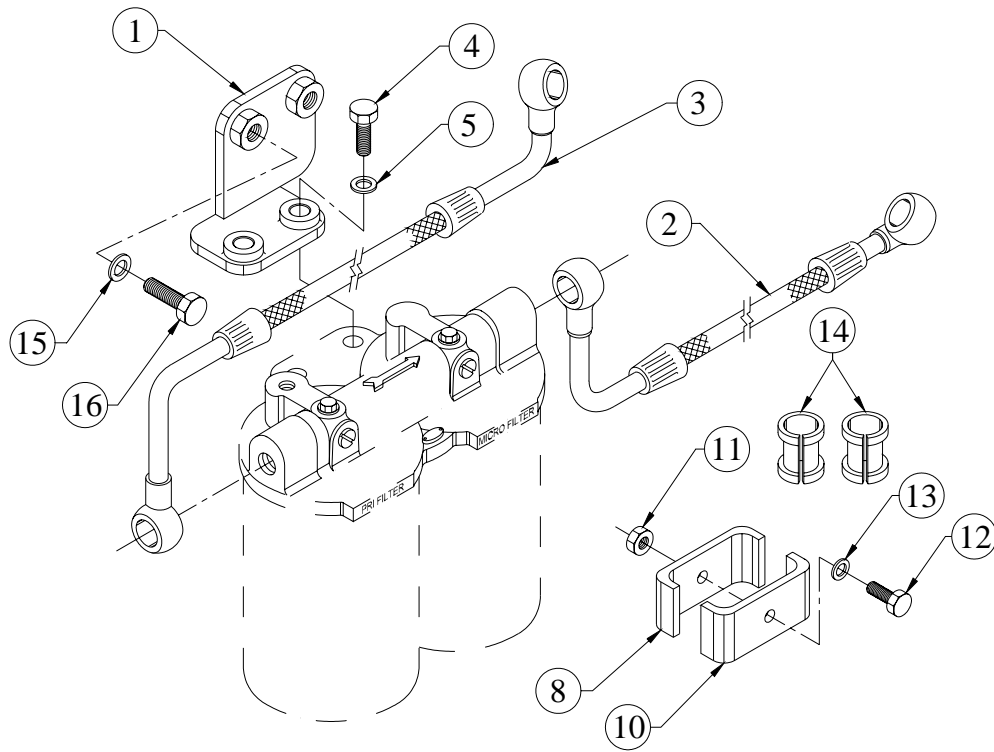
GROUP :- 3H.022



SR.NO.	PART NO.	DESCRIPTION	QTY.	REMARKS
1	P5.012.02.0.00	BRACKET FOR FUEL FILTER MTG.	1	
2	P5.012.03.0.00	FUEL PIPE (FEED PUMP TO FUEL FILTER)	1	
3	P5.012.04.0.00	FUEL PIPE (FUEL FILTER TO FUEL PUMP)	1	
4	50.003.10.025	SET SCREW - M10X1.5X25 - 8.8	2	
5	50.506.10.000	PLAIN MACHINED WASHER - M10	2	
*6	4H.031.20.0.00	CLAMP ASSLY FOR FUEL PIPES	1	CONSISTING OF SR. NO.- 7 & 14
*7	4H.031.30.0.00	CLAMP ASSEMBLY (WITHOUT RUBBER SLEEVE)	1	CONSISTING OF SR. NO.- 8, 9, 12 & 13
8	4H.031.06.0.00	CLAMP	1	
*9	4H.031.10.0.00	CLAMP SUB ASSLY	1	CONSISTING OF SR. NO.- 10 & 11
10	4H.031.06.0.00	CLAMP	1	
11	50.006.06.000	NUT - M6X1 - GR.8	1	

TITLE :- FUEL FILTER MTG.

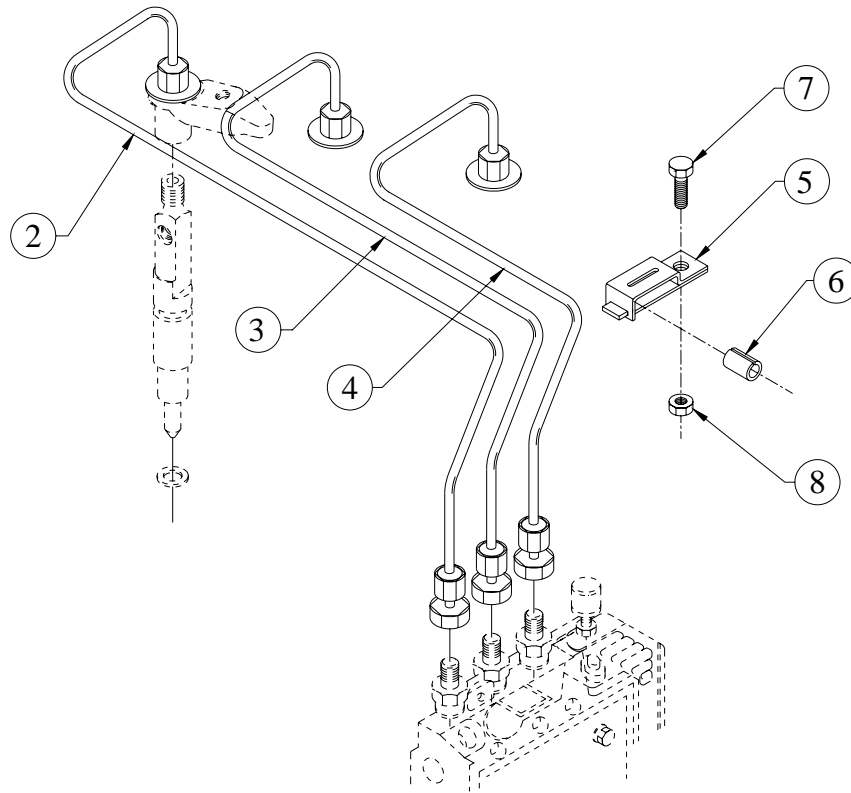
GROUP :- 3H.022



SR.NO.	PART NO.	DESCRIPTION	QTY.	REMARKS
12	50.003.06.025	SET SCREW - M6X1X25 - 8.8	1	
13	50.506.06.000	PLAIN MACHINED WASHER - M6	1	
14	4H.031.07.0.00	RUBBER SLEEVE	2	
15	50.506.12.000	PLAIN MACHINED WASHER - M12	2	
16	50.003.12.035	SET SCREW - M12X1.75X35 - 8.8	2	

TITLE: - FUEL INJECTION PIPE

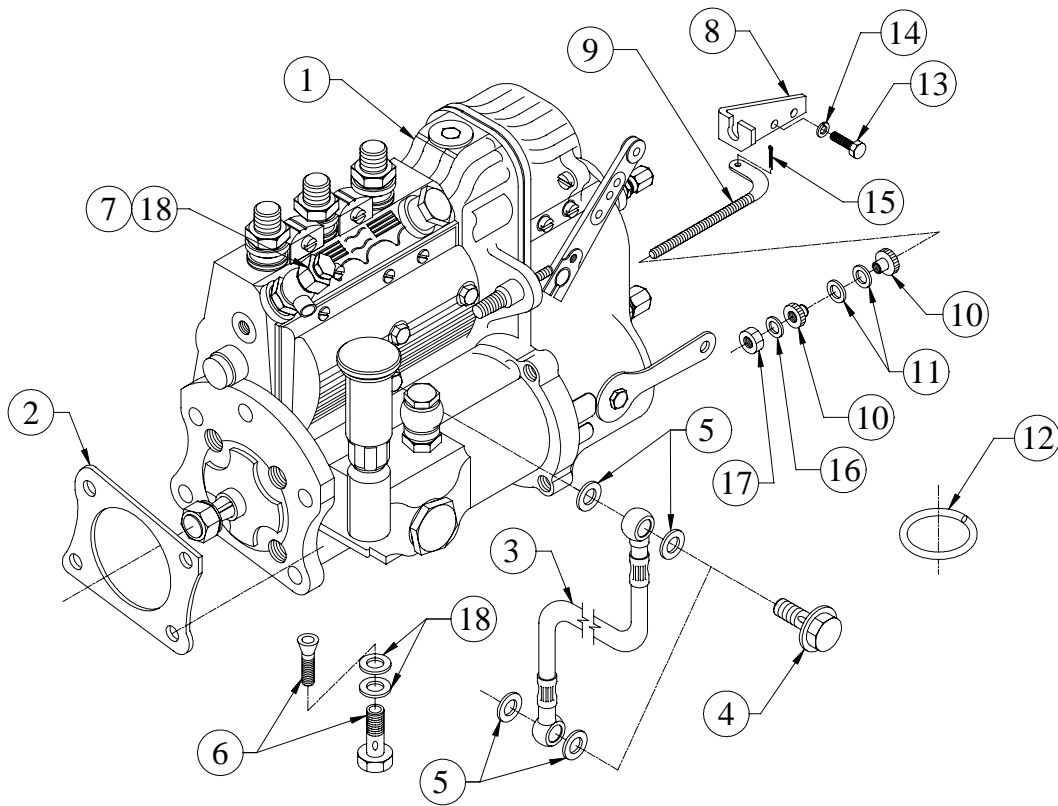
GROUP: - 3H.011



SR.NO.	PART NO.	DESCRIPTION	QTY.	REMARKS
*1	3H.011.10.0.00	H.P.PIPE ASSLY. (WITH PIPE CLIP)	1	CONSISTING OF SR.NO. 2 TO 8
2	3H.011.20.0.00	H.P.PIPE ASSLY CYLINDER NO.1	1	
3	3H.011.30.0.00	H.P.PIPE ASSLY CYLINDER NO.2	1	
4	3H.011.40.0.00	H.P.PIPE ASSLY CYLINDER NO.3	1	
5	50.541.02.000	PIPE CLIP. (FOR 3 PIPES)	1	
6	02.036.03.0.00	RUBBER SLEEVE	3	
7	50.003.06.012	SET SCREW - M6X1X12 - 8.8	1	
8	50.006.06.000	NUT - M6X1 - GR.8	1	

TITLE:- FUEL INJECTION PUMP
(PG APPLICATION)

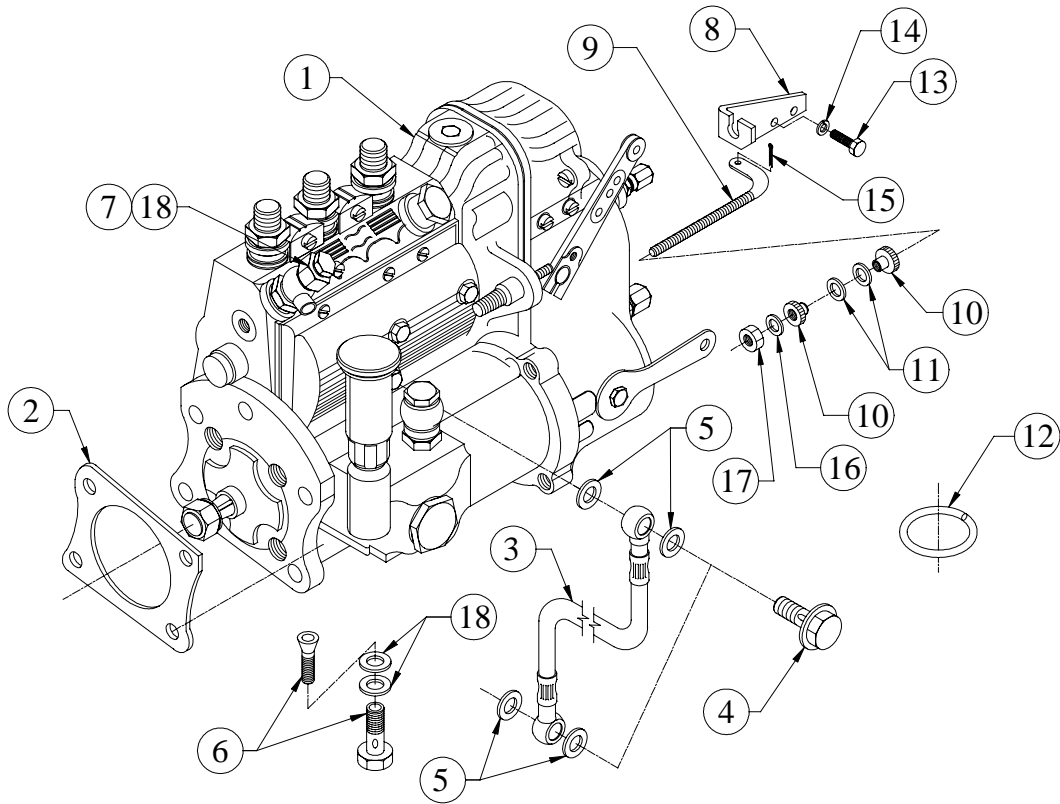
GROUP:- 3H.032...EXP



SR.NO.	PART NO.	DESCRIPTION	QTY.	REMARKS
1	3H.032.10.0.00	FUEL INJECTION PUMP (PG)--MICO NO. E 040 1160 00	1	
2	34.016.12.0.00	JOINT FOR FUEL PUMP (NON ASBESTOS)	1	
3	4H.006.01.0.00	L.O.SUPPLY HOSE (FIP)	1	
4	03.660.07.0.00	SPECIAL BANJO BOLT(L.O.SUPPLY TO PUMP)	2	
5	50.508.07.000.	COPPER WASHER (10X14)	4	
6	34.016.15.0.00	BANJO BOLT WITH STRAINER (2 443 456 900)	1	
7	50.504.04.000.	BANJO BOLT - M14X1.5	2	
8	4H.122.01.0.00	BRACKET FOR SPEED ADJUSTMENT	1	
9	4H.122.02.0.00	BAR FOR SPEED ADJUSTMENT	1	
10	03.065.04.0.00	KNURLED NUT	2	
11	03.065.05.0.00	SPHERICAL WASHER	2	
12	03.036.01.0.00	O RING - DIPSTICK (2X5,21515 OR 21511)	2	
13	50.003.06.015.	SET SCREW - M6X1X15 - 8.8	2	

TITLE:- FUEL INJECTION PUMP
(PG APPLICATION)

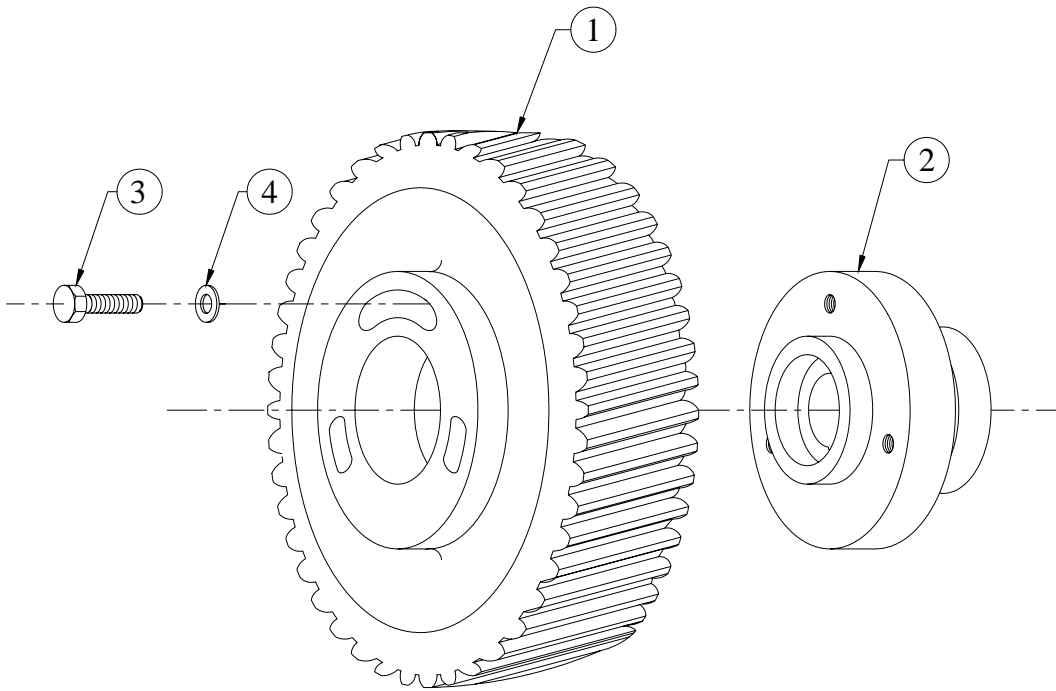
GROUP:- 3H.032...EXP



SR.NO.	PART NO.	DESCRIPTION	QTY.	REMARKS
14	50.505.06.000.	SPRING WASHER - M6	2	
15	50.036.03.001.	SPLIT COTTER PIN - 1/16"X1/2"	1	
16	50.548.06.000.	WASHER	1	
17	50.006.08.000.	NUT- M8X1.25 - GR.8	1	
18	50.565.14.000.	INTERNAL RUBBER LIP SEALING WASHER -M14- FOR FUEL LINES	6	

TITLE :- FUEL PUMP GEAR

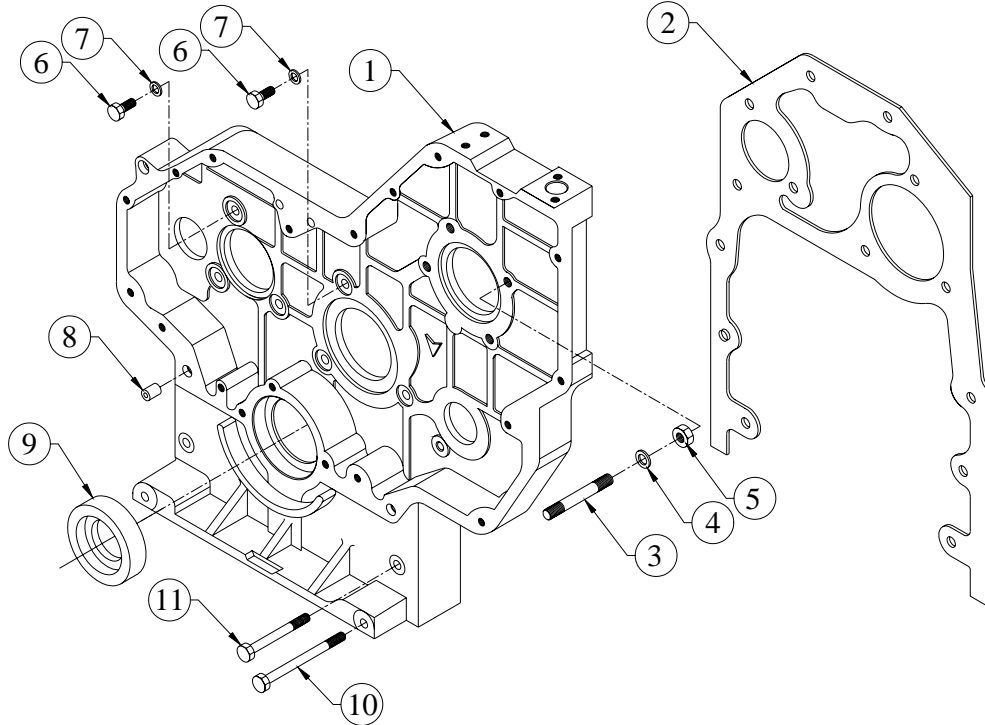
GROUP :- 2H.011



SR.NO.	PART NO.	DESCRIPTION	QTY.	REMARKS
1	2H.011.01.0.00	FUEL PUMP GEAR (FINISH)	1	
2	2H.011.02.0.00	HUB FOR FUEL PUMP GEAR (FINISH)	1	
3	50.003.08.025	SET SCREW - M8X1.25X25 - 8.8	3	
4	34.017.05.0.00	WASHER FOR FUEL PUMP GEAR	3	

TITLE: - GEAR CASING WITH DEFLECTOR

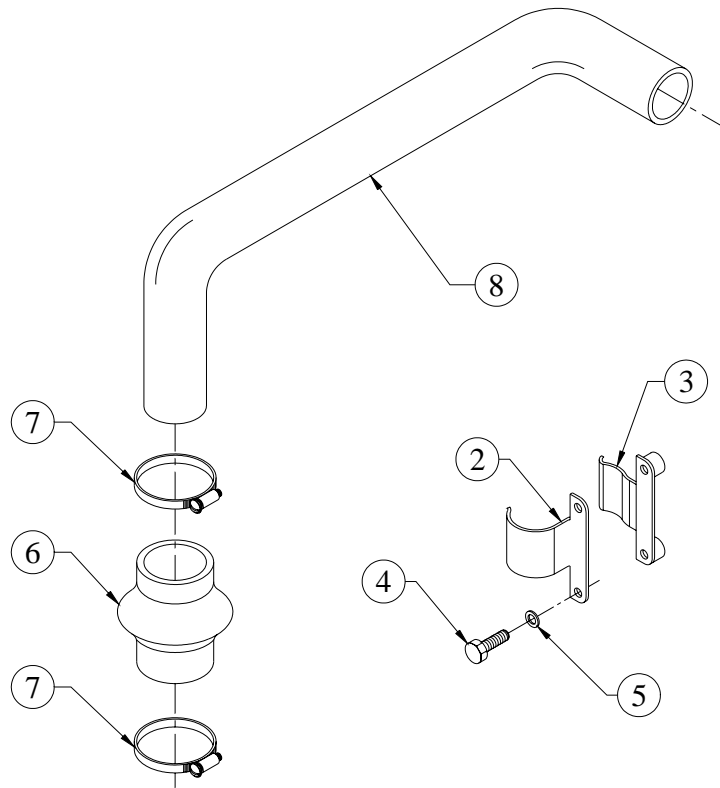
GROUP: - 4H.1074...EXP



SR.NO.	PART NO.	DESCRIPTION	QTY.	REMARKS
1	4H.178.02.0.00	GEAR CASING (MACHINING)	1	
2	2H.005.11.0.00	JOINT FOR GEAR COVER	1	
3	50.010.10.030.	STUD - M10X1.5X30 - 8.8	4	
4	03.001.25.0.00	WASHER (FOR FUEL PUMP MTG)	4	
5	50.006.10.000.	NUT - M10X1.5 - GR.8	4	
6	50.003.08.025.	SET SCREW - M8X1.25X25 - 8.8	6	
7	50.506.08.000.	PLAIN MACHINED WASHER - M8	10	
8	34.001.23.0.00	DOWEL FOR GEAR CASING	2	
9	03.013.06.0.00	OIL SEAL (65X85X13)(CR MAKE)	1	
10	50.002.08.110.	SET BOLT - M8X1.25X110 - 8.8	2	
11	50.002.08.080.	SET BOLT - M8X1.25X80 - 8.8	2	

TITLE :- HOSE CONN.(PG RADIATOR,STAGE 1)

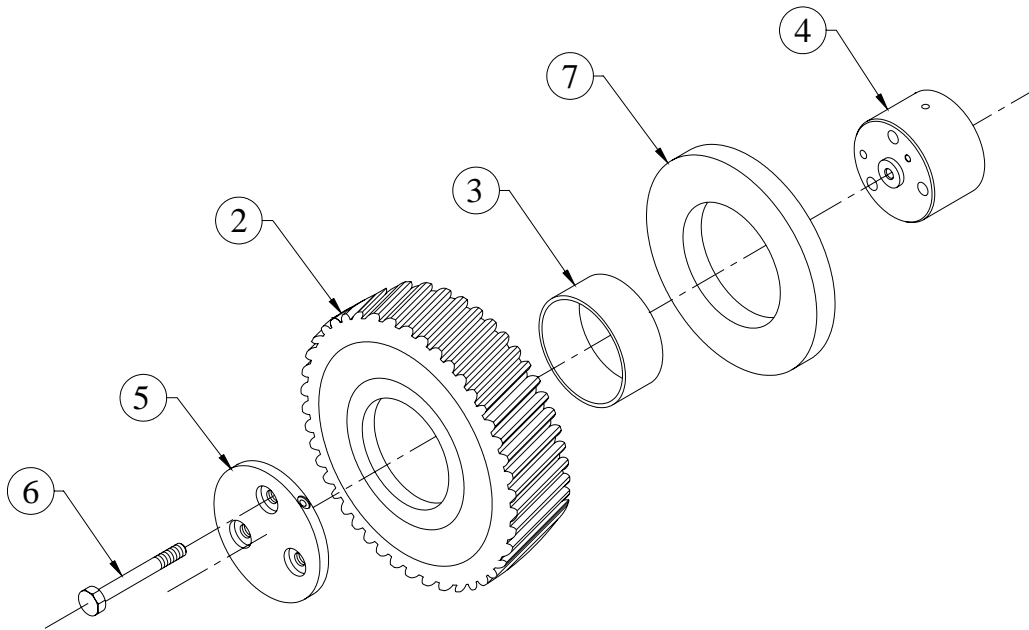
GROUP :- 4H.073.1



SR.NO.	PART NO.	DESCRIPTION	QTY.	REMARKS
*1	4H.073.10.0.00	CLAMP ASSLY FOR PIPE	1	CONSISTING OF SR. NO.- 2 & 3
2	4H.073.04.0.00	UPPER CLAMP FOR PIPE	1	
3	4H.073.05.0.00	LOWER CLAMP FOR PIPE	1	
4	50.002.08.075	SET BOLT - M8X1.25X75 - 8.8	2	
5	50.506.08.000	PLAIN MACHINED WASHER - M8	2	
6	4H.073.02.0.00	HOSE WATER PUMP TO RADIATOR (45X45X80L)	1	
7	50.519.11.000	WORM DRIVE HOSE CLIP (61 MM)	2	
8	4H.073.03.0.00	PIPE RADIATOR TO WATER PUMP INLET	1	

**TITLE :- INTERMEDIATE GEAR AND SUPPORT
(FOR ENGINE W/O AUTOTIMER)**

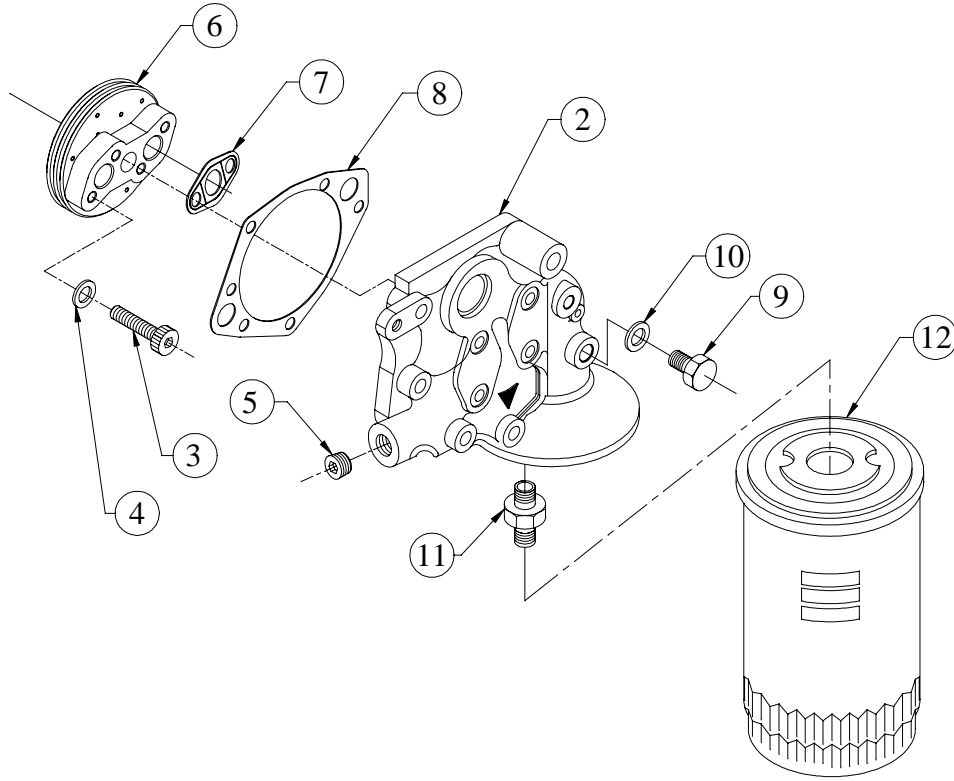
GROUP :- 4H.237



SR.NO.	PART NO.	DESCRIPTION	QTY.	REMARKS
*1	2H.038.10.0.00	ASSLY OF INTERMEDIATE GEAR & BUSH	1	CONSISTING OF SR.NO.2 & 3
2	2H.038.03.0.00	INTERMEDIATE GEAR (FINISH)	1	
3	2H.004.02.9.00	BUSH FOR INTERMEDIATE GEAR (S/F)	1	
4	4H.237.01.0.00	INTERMEDIATE GEAR SUPPORT (TURBO W/O AUTOTIMER)	1	
5	2H.004.04.0.00	RETAINING PLATE (FOR INT.GEAR)	1	
6	50.002.08.070	SET BOLT - M8X1.25X70 - 8.8	3	
7	2H.038.02.0.00	THRUST WASHER	1	

**TITLE :- L.O. COOLER & SPIN ON TYPE
L.O. FILTER S/F HEATER**

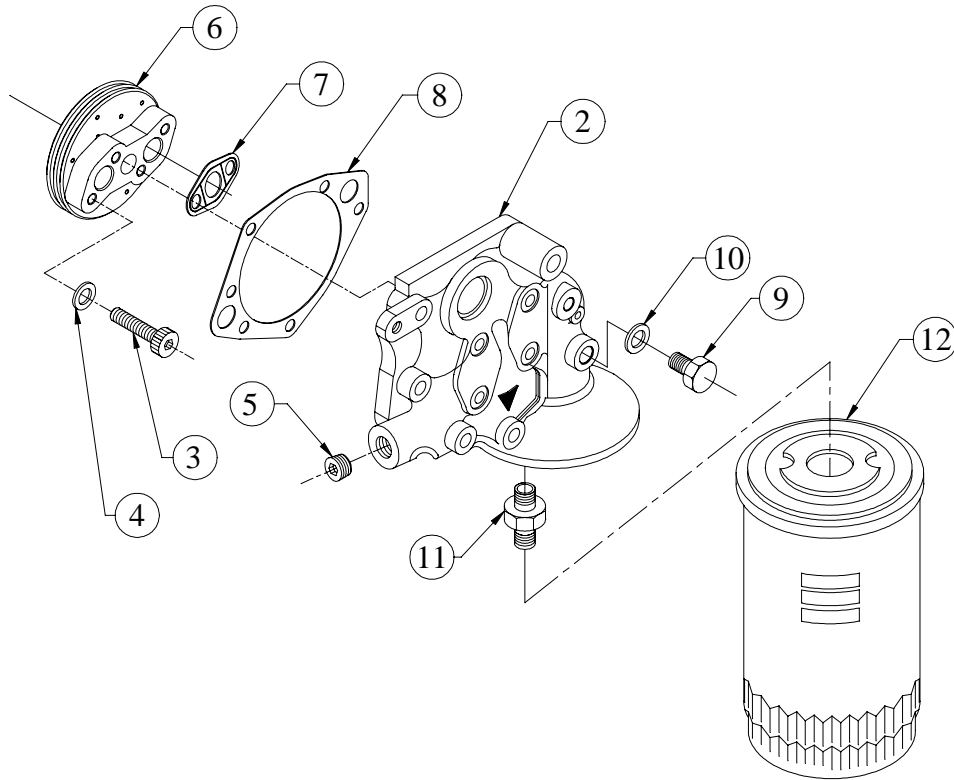
GROUP:- 3H.192



SR.NO.	PART NO.	DESCRIPTION	QTY.	REMARKS
*1	3H.192.30.0.00	L.O. HEADER SUB ASSEMBLY	1	CONSISTING OF SR. NO.- 2 TO 12
2	3H.192.01.0.00	HEADER FOR L.O. COOLER & FILTER S/F WATER JACKET HEATING	1	
3	50.011.08.040.	SOCKET HEAD SCREW - M8X1.25X40 - 8.8	4	
4	50.506.08.000.	PLAIN MACHINED WASHER - M8	6	
5	50.056.06.000.	HEADLESS PIPE PLUG 1/2"-14 NPTF	2	
6	3H.007.11.0.00	LUB OIL COOLER (3 PLATE)	1	
7	3H.007.13.0.00	JOINT FOR LUB OIL COOLER (NON ASBESTOS GASKET)	1	
8	3H.007.15.0.00	JOINT FOR HEADER	1	
9	34.001.09.0.00	PLUG FOR OIL GALLERY	1	
10	50.565.10.000.	INTERNAL RUBBER LIP SEALING WASHER -M10- FOR FUEL LINES	1	

**TITLE :- L.O. COOLER & SPIN ON TYPE
L.O. FILTER S/F HEATER**

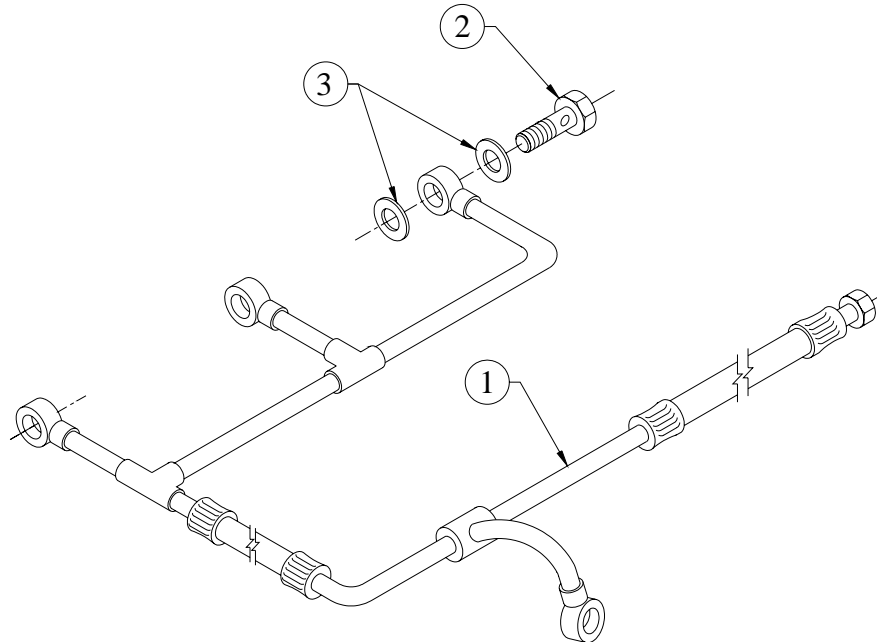
GROUP:- 3H.192



SR.NO.	PART NO.	DESCRIPTION	QTY.	REMARKS
11	3H.007.05.0.00	ADAPTOR FOR SPIN ON FILTER	1	
12	04.270.01.0.00	SPIN ON FILTER FOR LUBRICATING OIL	1	

TITLE :- LEAK OFF PIPE FOR 20 & 25 KVA

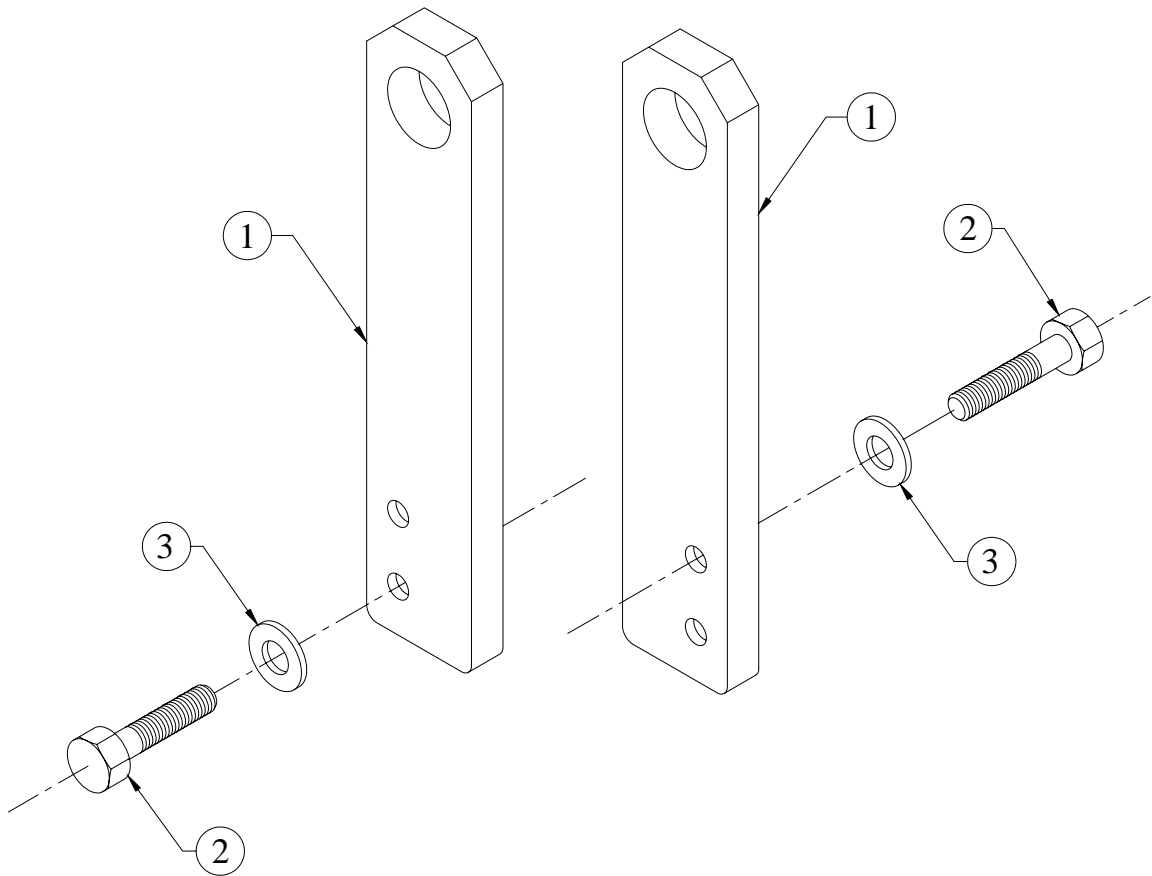
GROUP :- 3H.151



SR.NO.	PART NO.	DESCRIPTION	QTY.	REMARKS
1	3H.151.10.0.00	NOZZLE LEAK OFF PIPE FOR KVA20/25	1	
2	03.027.04.0.00	BANJO BOLT	3	
3	50.508.05.000.	COPPER WASHER (8X12)	6	

TITLE :- LIFTING HOOK (TURBO ENGINE)

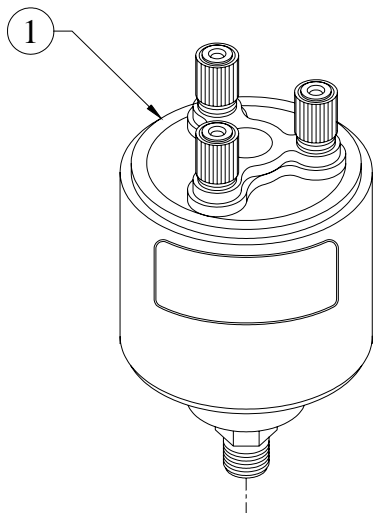
GROUP :- 4H.170



SR.NO.	PART NO.	DESCRIPTION	QTY.	REMARKS
1	4H.170.01.0.00	LIFTING HOOK	2	
2	50.002.10.025	SET BOLT	4	
3	50.506.10.0.00	PLAIN MACHINED WASHER	4	

TITLE:- LUBE OIL PR GAUGE SENDOR

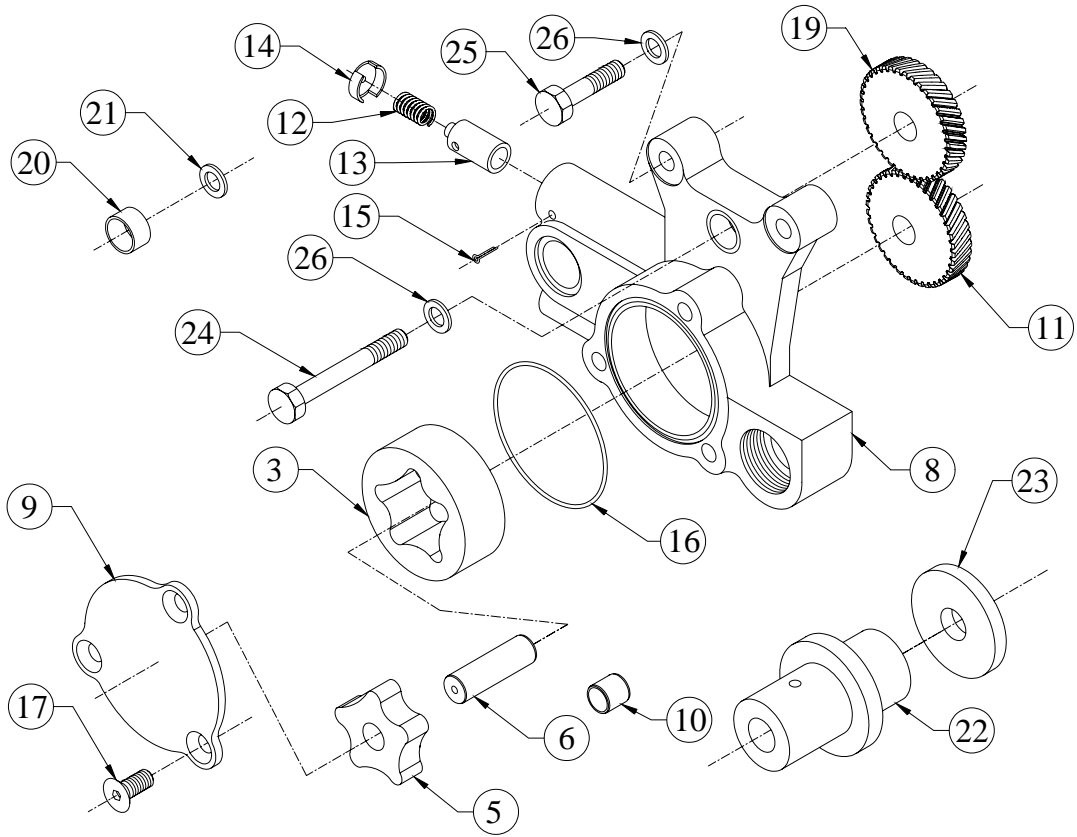
GROUP:- 2H.092.1



SR.NO.	PART NO.	DESCRIPTION	QTY.	REMARKS
1	2H.092.01.0.00	LUB OIL PRESSURE SENDOR 1.5 +/- 1 BAR THREE TERMINAL	1	

TITLE :- LUBE.OIL PUMP

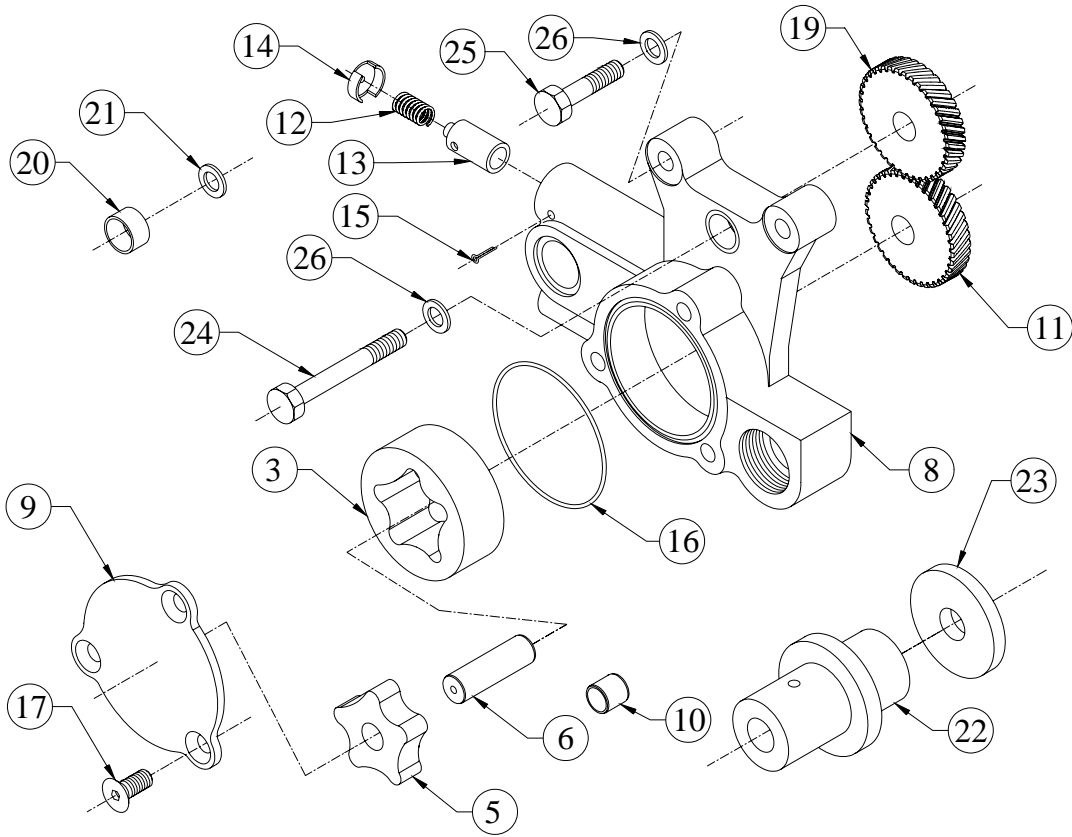
GROUP :- 3H.005



SR.NO.	PART NO.	DESCRIPTION	QTY.	REMARKS
*1	3H.005.50.0.00	LUB OIL PUMP SUB ASSEMBLY	1	CONSIST. OF SR. NO. 2,18 21 TO 24
*2	3H.005.10.0.00	LUBE.OIL PUMP ASSLY.	1	CONSIST. OF SR. NO. 3,4, & 7
3	03.010.17.0.00	OUTER ROTOR	1	
*4	3H.005.40.0.00	ROTOR SUB ASSLY.(W/O KEY)	1	CONSIST. OF SR. NO. 5 & 6
5	03.010.22.0.00	INNER ROTOR	1	
6	03.010.23.0.00	SHAFT FOR INNER ROTOR	1	
*7	3H.005.90.0.00	LUB OIL PUMP ASSEMBLY KIT	1	CONSIST. OF SR. NO. 8 TO 17
8	3H.005.01.0.00	L.O.PUMP BODY(COMPACT VERSION)(FINISH)	1	
9	06.010.02.0.00	COVER PLATE	1	
10	03.010.05.0.00	BUSH FOR L.O.PUMP BODY	1	
11	3H.005.04.0.00	LUB.OIL PUMP DRIVING GEAR(FINISH)	1	
12	03.010.14.0.00	SPRING FOR RELIEF VALVE	1	

TITLE :- LUBE.OIL PUMP

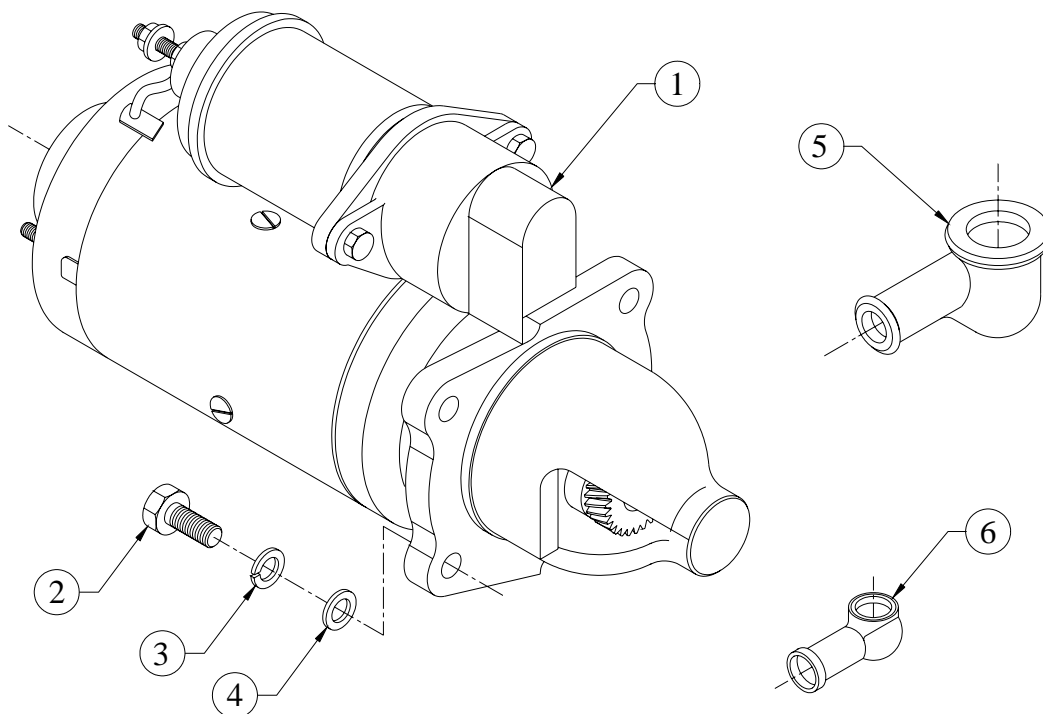
GROUP :- 3H.005



SR.NO.	PART NO.	DESCRIPTION	QTY.	REMARKS
13	03.010.13.0.00	RELIEF VALVE	1	
14	03.010.15.0.00	CUP FOR SPRING	1	
15	50.036.07.010.	SPLIT COTTER PIN - 1/8"X1-1/2"	1	
16	03.010.11.0.00	O RING - L.O.PUMP (1.57X65,21508)	1	
17	06.010.01.0.00	COUNTER SUNK SOCKET HEAD SCREW.	3	
*18	3H.005.30.0.00	SUB.ASSLY.OF L.O.PUMP INT.GEAR AND BUSH.	1	CONSIST. OF SR. NO. 19 & 20
19	3H.005.03.0.00	INTERMEDIATE GEAR (FOR L.O.PUMP) (FINISH)	1	
20	34.014.12.0.00	BUSH FOR LEVER	1	
21	02.024.38.0.00	WASHER (ROCKER LEVER)	1	
22	4H.372.01.0.00	SHAFT FOR LUB OIL PUMP (INTERMEDIATE GEAR)	1	
23	4H.372.02.0.00	HARD WASHER (FOR INT. GEAR)	1	
24	50.002.08.075.	SET BOLT - M8X1.25X75 - 8.8	1	
25	50.002.08.035.	SET BOLT - M8X1.25X35 - 8.8	2	
26	50.506.08.000.	PLAIN MACHINED WASHER - M8	3	

**TITLE: - STARTER 12VDC 2.7KW MICO
SUITABLE FOR 30*C**

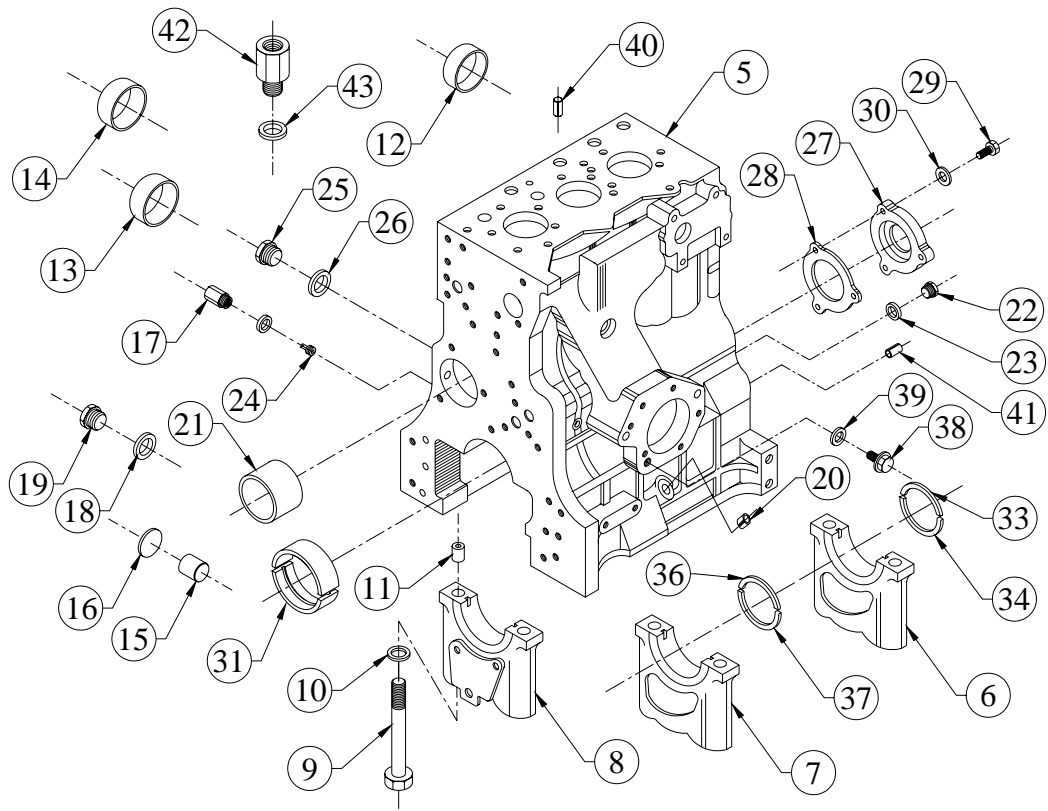
GROUP: - 2H.301



SR.NO.	PART NO.	DESCRIPTION	QTY.	REMARKS
1	2H.301.01.0.00	MICO STARTER 12VDC 2.7KW SUITABLE FOR -20*C TYPE NO.9000033009 DEL 114L	1	
2	50.003.10.030.	SET SCREW - M10X1.5X30 - 8.8	3	
3	50.505.10.000.	SPRING WASHER - M10	3	
4	50.506.10.000.	PLAIN MACHINED WASHER - M10	3	
5	24.083.01.0.00	RUBBER SLEEVE (20DIA)	1	
6	22.118.01.0.00	RUBBER SLEEVE (12DIA)	1	

TITLE :- MONOBLOCK CRANKCASE (S/F USA)

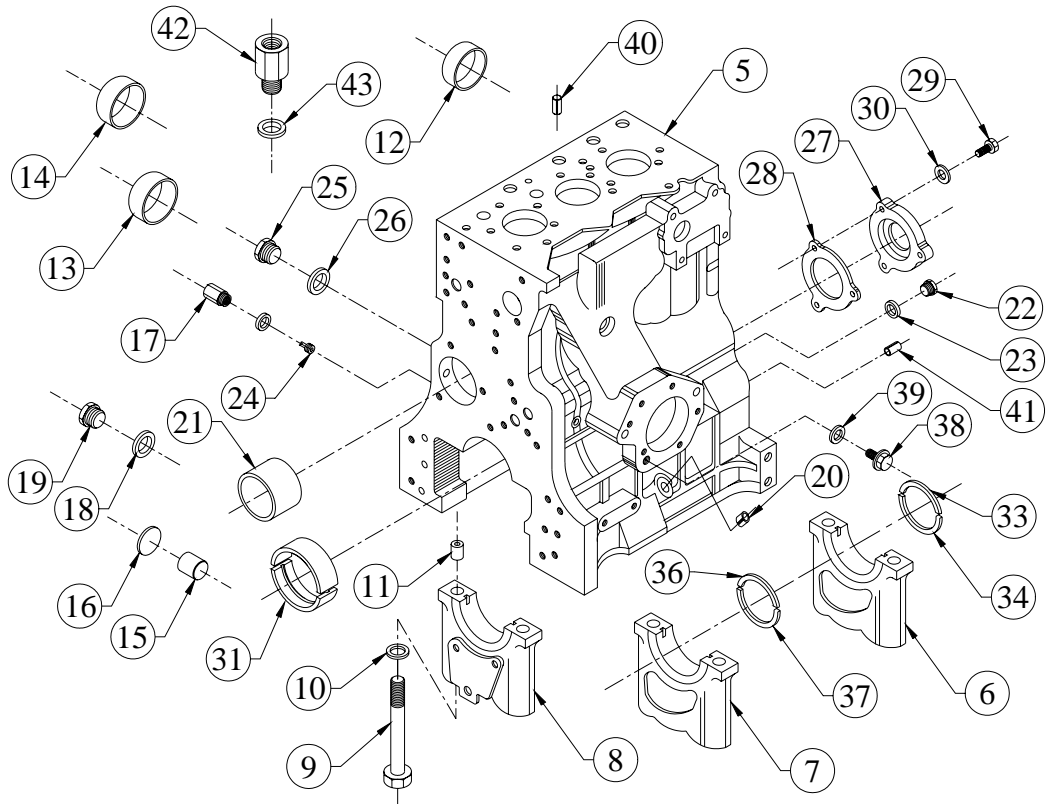
GROUP :- 3H.001...EXP



SR.NO.	PART NO.	DESCRIPTION	QTY.	REMARKS
*1	3H.001.50.0.00	CRANKCASE ASSEMBLY (FOR USA)	1	CONSISTING OF SR. NO.- 2, 21 TO 30
*2	3H.001.20.0.00	MONOBLOCK CRANKCASE & BRG.CAP ASSLY.	1	CONSISTING OF SR. NO.- 3 AND 20
*3	3H.001.30.0.00	MONOBLOCK CRANKCASE WITH BEARING CAP	1	CONSISTING OF SR. NO.- 4 17 TO 21
*4	3H.001.40.0.00	CRANKCASE (LINE BORING OPERATION)	1	CONSISTING OF SR. NO.- 5 TO 16
5	3H.001.01.0.00	MONOBLOCK CRANKCASE	1	
6	03.001.23.0.00	M.B.CAP (FWE)16.99 DIA.DOWEL HOLE	1	
7	03.001.24.0.00	M.B.CAP (KHD)16.99DIA DOWEL HOLES	2	
8	4H.001.02.0.00	BEARING CAP(GEAR END)(FINISH)	1	

TITLE :- MONOBLOCK CRANKCASE (S/F USA)

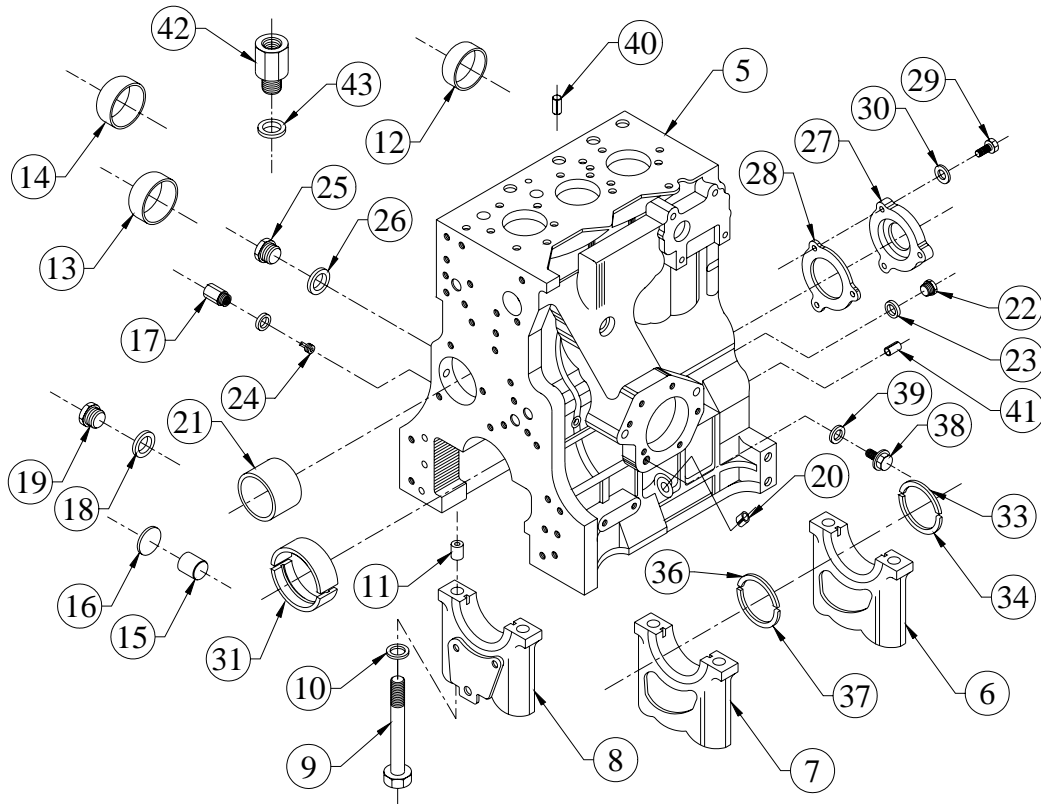
GROUP :- 3H.001...EXP



SR.NO.	PART NO.	DESCRIPTION	QTY.	REMARKS
9	03.001.22.0.00	BOLT FOR MB CAP(HEX HEAD) M14X2X128	8	
10	02.001.04.0.00	WASHER	8	
11	B2.005.16.0.00	HOLLOW DOWEL(M.B.CAP)	8	
12	F6.007.34.0.00	SEALING CAP	5	
13	F6.001.58.0.00	SEALING CAP.(40 DIN 443)	2	
14	4H.001.05.0.00	SEALING CAP(52 DIN 443)	2	
15	34.003.07.0.00	CRANK SHAFT PLUG – ALUMINIUM	2	
16	34.003.08.0.00	WASHER FOR ALU.PLUG.	2	
17	34.001.09.0.00	PLUG FOR OIL GALLERY	1	
18	50.565.10.000	INTERNAL RUBBER LIP SEALING WASHER -M10- FOR FUEL LINES	1	
19	50.610.10.000	CORE PLUG	1	
20	02.037.04.0.00	DIPSTICK GUIDE	1	
21	03.001.04.0.00	CAM BUSH	1	
22	04.001.04.0.00	SCREW PLUG (M20 X 1.5)	1	
23	50.508.18.000	COPPER WASHER (20X24)	1	

TITLE :- MONOBLOCK CRANKCASE (S/F USA)

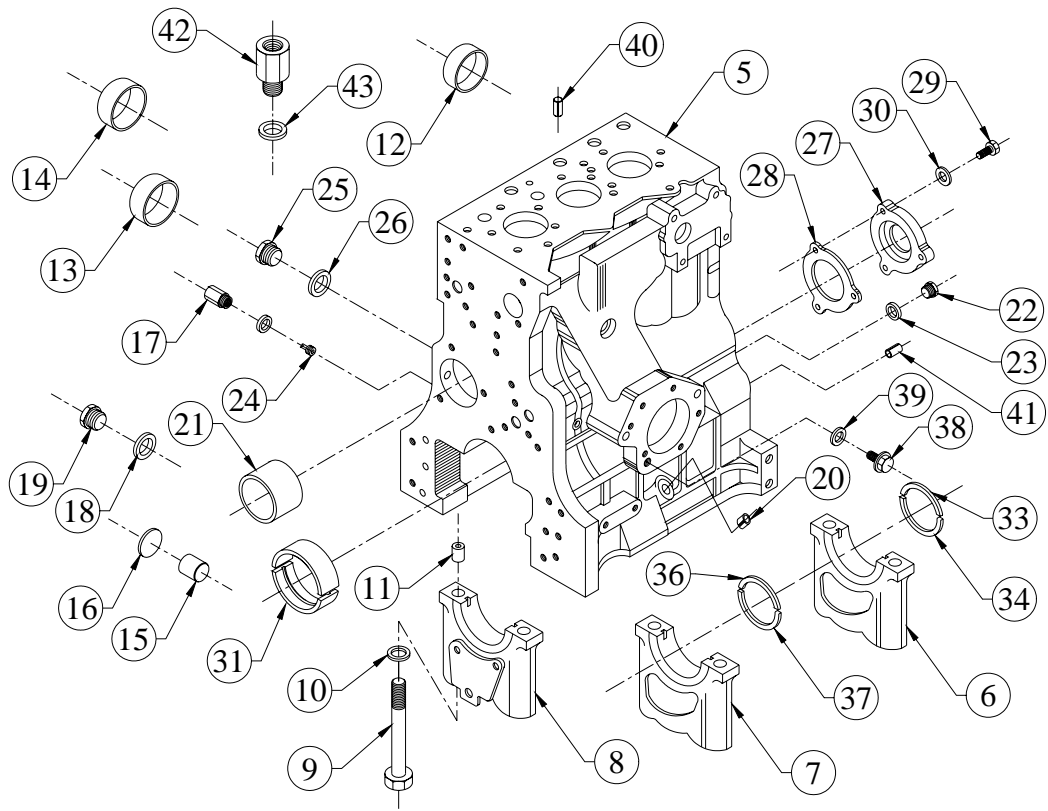
GROUP :- 3H.001...EXP



SR.NO.	PART NO.	DESCRIPTION	QTY.	REMARKS
24	03.001.07.0.00	SLOTTED PIN	4	
25	50.610.12.000	CORE PLUG	4	
26	50.565.12.000	INTERNAL RUBBER LIP SEALING WASHER -M12- FOR FUEL LINES	4	
27	4H.001.03.0.00	BLANKING PLATE FOR CAM BORE	1	
28	4H.001.14.0.00	JOINT FOR CAM BORE BLANKING PLATE	1	
29	50.003.08.025	SET SCREW - M8X1.25X25 - 8.8	3	
30	50.506.08.000	PLAIN MACHINED WASHER - M8	3	
31	02.001.07.0.00	MAIN BRG TOP & BOTTOM (BEARING PART NO. * M-073400003)	4	
*32	03.001.18.0.00	THRUST RING PAIR-DRIVE END,102 DIA.)	1	CONSISTING OF SR. NO.- 33 AND 34
33	03.001.19.0.00	THRUST WASHER -DRIVE END, TOP	1	
34	03.001.21.0.00	THRUST WASHER (DRIVE END,BOTTOM)	1	
*35	B2.005.22.0.00	THRUST RING PAIR-G.E.	1	CONSISTING OF SR. NO.- 36 AND 37

TITLE :- MONOBLOCK CRANKCASE (S/F USA)

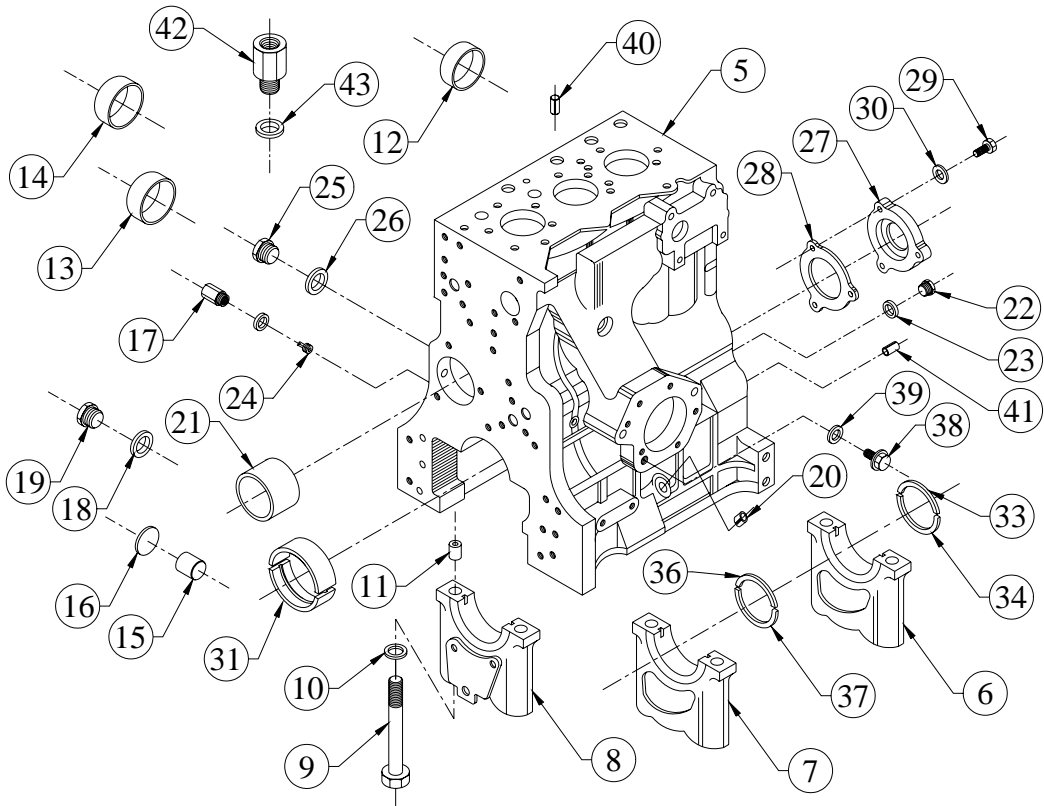
GROUP :- 3H.001...EXP



SR.NO.	PART NO.	DESCRIPTION	QTY.	REMARKS
36	B2.005.18.0.00	THRUST RING HALF (G.E.-TOP)	1	
37	B2.005.19.0.00	THRUST RING HALF (G.E.-BOTTOM)	1	
38	50.602.14.000	PLUG (M14X1.5)	1	
39	50.565.14.000	INTERNAL RUBBER LIP SEALING WASHER -M14- FOR FUEL LINES	1	
40	50.401.08.014	DOWEL	2	
41	50.540.09.016	SPRING DOWEL PIN	2	
42	4H.235.01.0.00	ADAPTOR FOR L.O. PRESSURE SENSOR (M10 X 1.5 X 1/8" NPTF)	1	
43	50.566.10.000	INTERNAL RUBBER LIP SEALING WASHER -M10- FOR LUB OIL LINES	1	
*44	M-073400003	MAIN BEARING SET	1	(4 PAIRS) STD.
*45	M-073400013	MAIN BEARING SET	1	0.25 mm U/S
*46	M-073400023	MAIN BEARING SET	1	0.50 mm U/S
*47	M-073400033	MAIN BEARING SET	1	0.75 mm U/S
*48	M-073400043	MAIN BEARING SET	1	1.00 mm U/S
*49	M-073400053	MAIN BEARING SET	1	1.25 mm U/S

TITLE :- MONOBLOCK CRANKCASE (S/F USA)

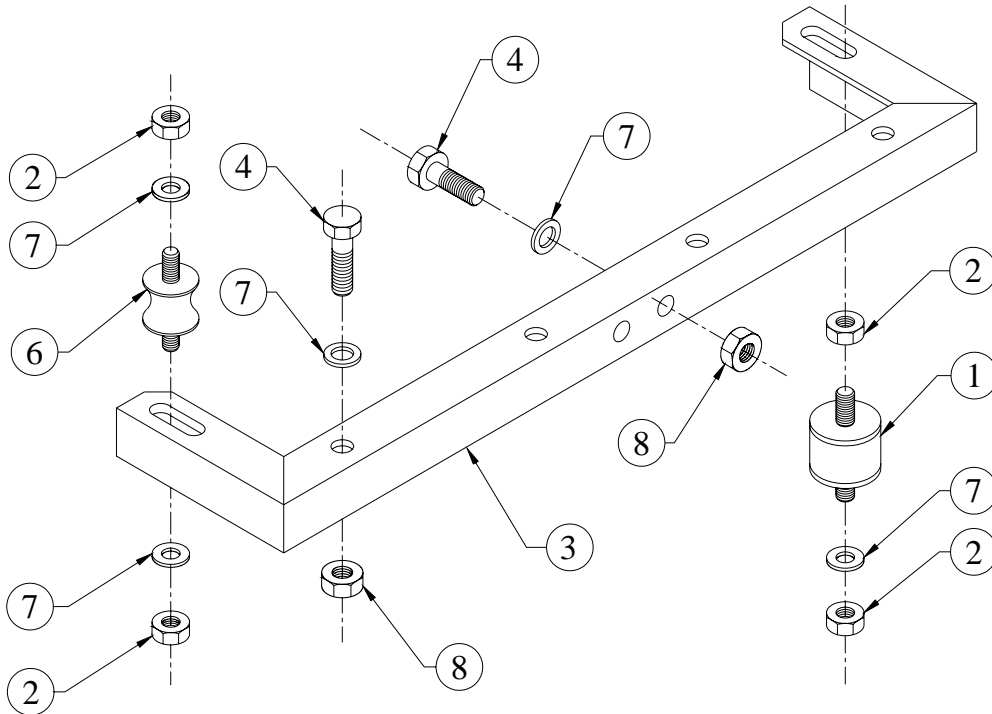
GROUP :- 3H.001...EXP



SR.NO.	PART NO.	DESCRIPTION	QTY.	REMARKS
*50	M-073400063	MAIN BEARING SET	1	1.50 mm U/S
*51	W-073500003	THRUST WASHER SET	1	CONSISTS 2 HALF RINGS FLYWHEEL END AND GEAR END

TITLE :- MTG.FOR RADIATOR (PG,STAGE2)

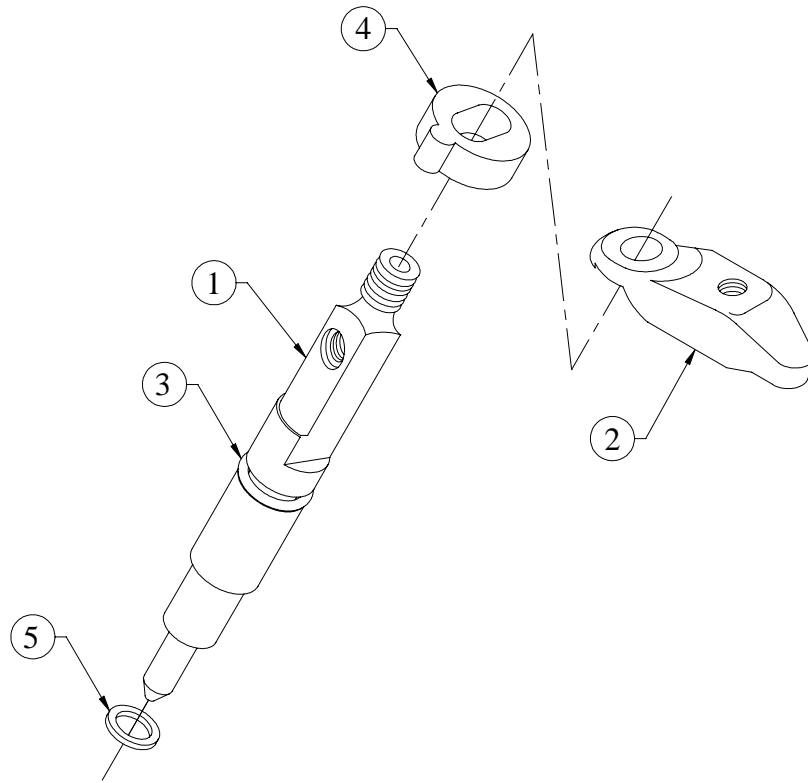
GROUP :- 4H.081.2



SR.NO.	PART NO.	DESCRIPTION	QTY.	REMARKS
1	48.213.08.0.00	ANTIVIBRATION MTG.- BOTTOM,RADIATOR.	2	
2	50.006.10.000.	NUT - M10X1.5 - GR.8	4	
3	4H.081.04.0.00	STAY FOR RADIATOR	1	
4	50.003.08.016.	SET SCREW - M8X1.25X16 - 8.8	2	
5	50.003.08.020.	SET SCREW - M8X1.25X20 - 8.8	8	
6	44.035.05.0.00	ANTIVIBRATION MOUNTING	2	
7	50.548.08.000.	SPL.PLAIN M/CED WASHER	20	
8	50.006.08.000.	NUT- M8X1.25 - GR.8	8	
*9	50.003.08.030.	SET SCREW - M8X1.25X30 - 8.8	4	NOT ILLUSTRATED

TITLE:- NOZZLE & NOZZLE MTG.

GROUP:- 2H.023



SR.NO.	PART NO.	DESCRIPTION	QTY.	REMARKS
1	2H.023.10.0.00	INJECTOR ASSLY.(5X0.20 DIA.) F002C7Z601	1	
2	2H.023.01.0.00	INJECTOR YOKE.	1	
3	3H.009.11.0.00	O RING FOR NOZZLE	1	
4	02.035.08.0.00	BUSH FOR INJECTOR	1	
5	10.029.07.0.00	WASHER FOR INJECTOR (MICO NO. 2 439 999 032)	1	

TITLE:- INJECTOR ASSLY

GROUP:- 2H.023

Nozzle Holder
KBAL...



SR.NO.	KOEL PART NO.	DESCRIPTION	QTY.	MICO PART NO.
4	2H.023.24.0.00	Adjusting washer 0.80 mm thick	as reqd.	2 430 100 525
4	2H.023.25.0.00	Adjusting washer 0.84 mm thick	as reqd.	2 430 100 527
4	2H.023.26.0.00	Adjusting washer 0.88 mm thick	as reqd.	2 430 100 529
4	2H.023.27.0.00	Shims 0.92 mm thick	as reqd.	2 430 100 531
4	2H.023.28.0.00	Adjusting washer 0.96 mm thick	as reqd.	2 430 100 533
4	2H.023.29.0.00	Shims 1.00 mm thick	as reqd.	2 430 100 535
4	2H.023.30.0.00	Adjusting washer 1.04 mm thick	as reqd.	2 430 100 537
4	2H.023.31.0.00	Shims 1.08 mm thick	as reqd.	2 430 100 539
4	2H.023.32.0.00	Adjusting washer 1.12 mm thick	as reqd.	2 430 100 541

TITLE:- INJECTOR ASSLY

GROUP:- 2H.023

Nozzle Holder
KBAL...



SR.NO.	KOEL PART NO.	DESCRIPTION	QTY.	MICO PART NO.
4	2H.023.33.0.00	Shims 1.16 mm thick	as reqd.	2 430 100 543
4	2H.023.34.0.00	Adjusting washer 1.20 mm thick	as reqd.	2 430 100 545
4	2H.023.35.0.00	Shims 1.24 mm thick	as reqd.	2 430 100 547
4	2H.023.36.0.00	Adjusting washer 1.28 mm thick	as reqd.	2 430 100 549
4	2H.023.37.0.00	Shims 1.32 mm thick	as reqd.	2 430 100 551
4	2H.023.38.0.00	Adjusting washer 1.36 mm thick	as reqd.	2 430 100 553
4	2H.023.39.0.00	Shims 1.40 mm thick	as reqd.	2 430 100 555
4	2H.023.40.0.00	Adjusting washer 1.44 mm thick	as reqd.	2 430 100 557
4	2H.023.41.0.00	Shims 1.48 mm thick	as reqd.	2 430 100 559

TITLE:- INJECTOR ASSLY**GROUP:- 2H.023**Nozzle Holder
KBAL...

SR.NO.	KOEL PART NO.	DESCRIPTION	QTY.	MICO PART NO.
4	2H.023.42.0.00	Adjusting washer 1.52 mm thick	as reqd.	2 430 100 561
4	2H.023.43.0.00	Shims 1.56 mm thick	as reqd.	2 430 100 563
4	2H.023.44.0.00	Adjusting washer 1.60 mm thick	as reqd.	2 430 100 565
4	2H.023.45.0.00	Shims 1.64 mm thick	as reqd.	2 430 100 567
4	2H.023.46.0.00	Adjusting washer 1.68 mm thick	as reqd.	2 430 100 569
4	2H.023.47.0.00	Shims 1.72 mm thick	as reqd.	2 430 100 571
4	2H.023.48.0.00	Adjusting washer 1.76 mm thick	as reqd.	2 430 100 573
4	2H.023.49.0.00	Shims 1.80 mm thick	as reqd.	2 430 100 575
4	2H.023.50.0.00	Adjusting washer 1.84 mm thick	as reqd.	2 430 100 577

TITLE:- INJECTOR ASSLY

GROUP:- 2H.023

Nozzle Holder
KBAL...



SR.NO.	KOEL PART NO.	DESCRIPTION	QTY.	MICO PART NO.
4	2H.023.51.0.00	Shims 1.88 mm thick	as reqd.	2 430 100 579
4	2H.023.52.0.00	Adjusting washer 1.92 mm thick	as reqd.	2 430 100 581
4	2H.023.53.0.00	Shims 1.96 mm thick	as reqd.	2 430 100 583
8	2H.023.54.0.00	Distance piece	1	2 430 136 015
2	2H.023.55.0.00	Pressure bolt	1	2 433 124 035
7	2H.023.56.0.00	Nozzle cap nut	1	2 433 314 120
3	2H.023.57.0.00	Spring	1	2 434 619 064
12*	10.029.07.0.00	Nozzle sealing washer	1	2 439 999 032
4	2H.023.62.0.00	Shim	as reqd.	9 431 030 149
4	2H.023.63.0.00	Shim	as reqd.	9 431 030 150
4	2H.023.64.0.00	Shim	as reqd.	9 431 030 151

TITLE:- INJECTOR ASSLY

GROUP:- 2H.023

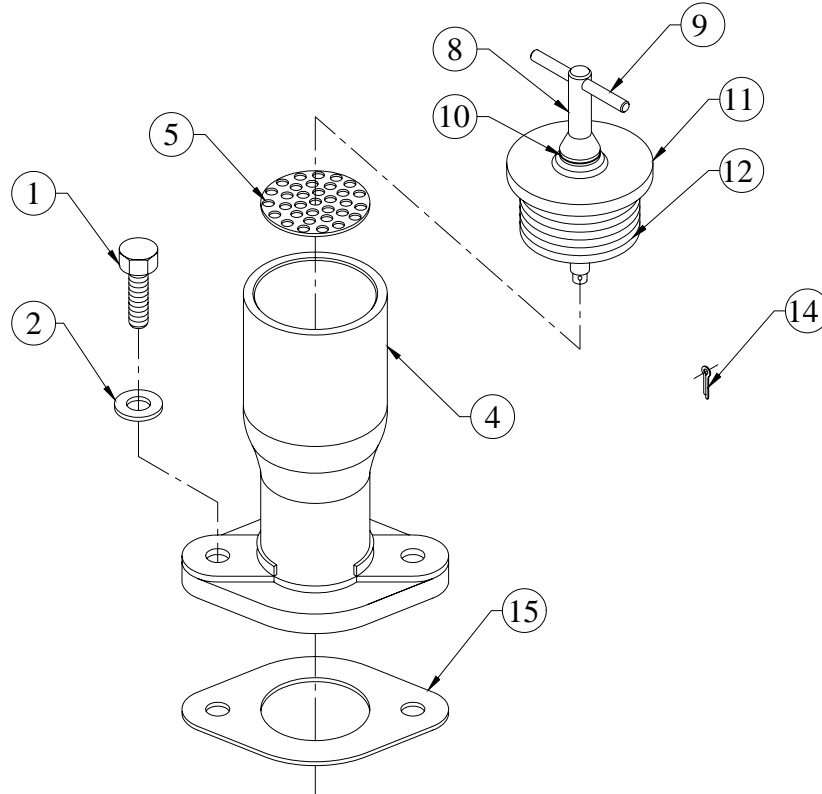
Nozzle Holder
KBAL...



SR.NO.	KOEL PART NO.	DESCRIPTION	QTY.	MICO PART NO.
4	2H.023.65.0.00	Shim	as reqd.	9 431 030 152
4	2H.023.66.0.00	Shim	as reqd.	9 431 030 153
4	2H.023.67.0.00	Shim	as reqd.	9 431 030 154
4	2H.023.68.0.00	Shim	1	9 431 030 155
4	2H.023.69.0.00	Shim	as reqd.	9 431 030 156
4	2H.023.70.0.00	Shim	as reqd.	9 431 030 157
11*	2H.023.21.0.00	Nozzle	1	F 002 C30 003

TITLE:- OIL FILLING BODY

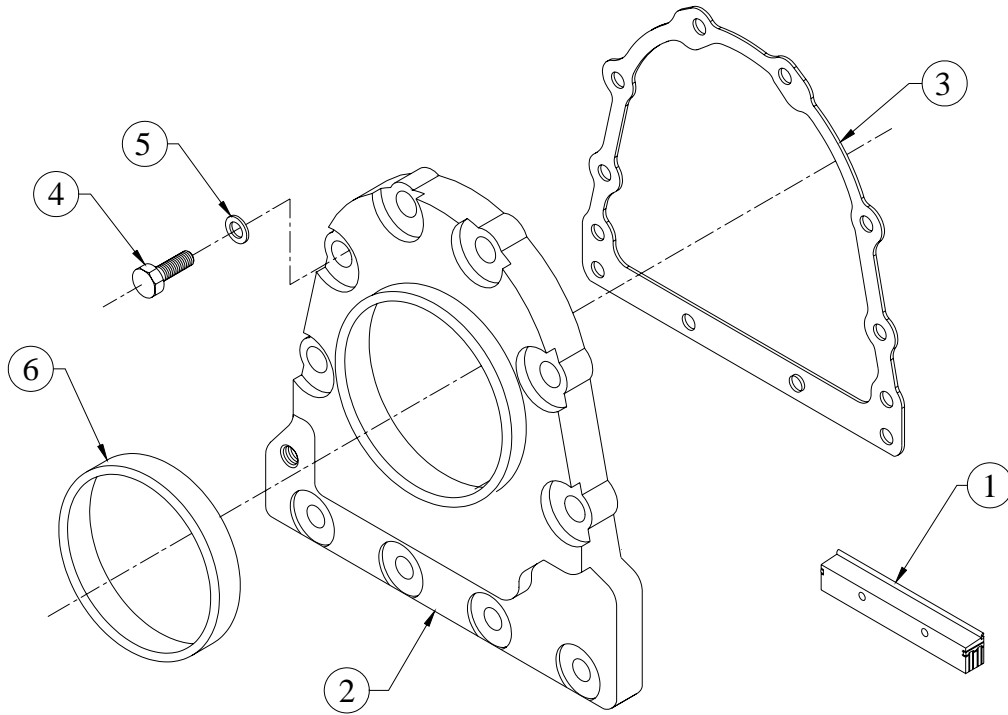
GROUP:- 4H.027...EXP



SR.NO.	PART NO.	DESCRIPTION	QTY.	REMARKS
1	50.003.08.025	SET SCREW - M8X1.25X25 - 8.8	2	
2	50.506.08.000.	PLAIN MACHINED WASHER - M8	2	
*3	4H.027.20.0.00	ASSEMBLY OF OIL FILLING BODY WITH JOINT	1	CONSISTING OF SR. NO.- 4 TO 6, 15
4	4H.027.01.0.00	OIL FILLING BODY	1	
5	34.036.50.0.00	PERFORATED DISC.	1	
*6	34.036.60.0.00	CAP ASSLY	1	CONSISTING OF SR. NO.- 7, 10 TO 14
*7	03.592.10.0.00	SUB-ASSLY.OF CLAMPING SCREW	1	CONSISTING OF SR. NO.- 8 & 9
8	03.592.01.0.00	CLAMPING SCREW FOR CAP	1	
9	34.036.16.0.00	PIN	1	
10	34.036.17.0.00	WASHER	1	
11	34.036.14.0.00	CAP	1	
12	03.592.02.0.00	RUBBER BUSH FOR CAP	1	

TITLE:- OIL SEAL HOUSING (PG)

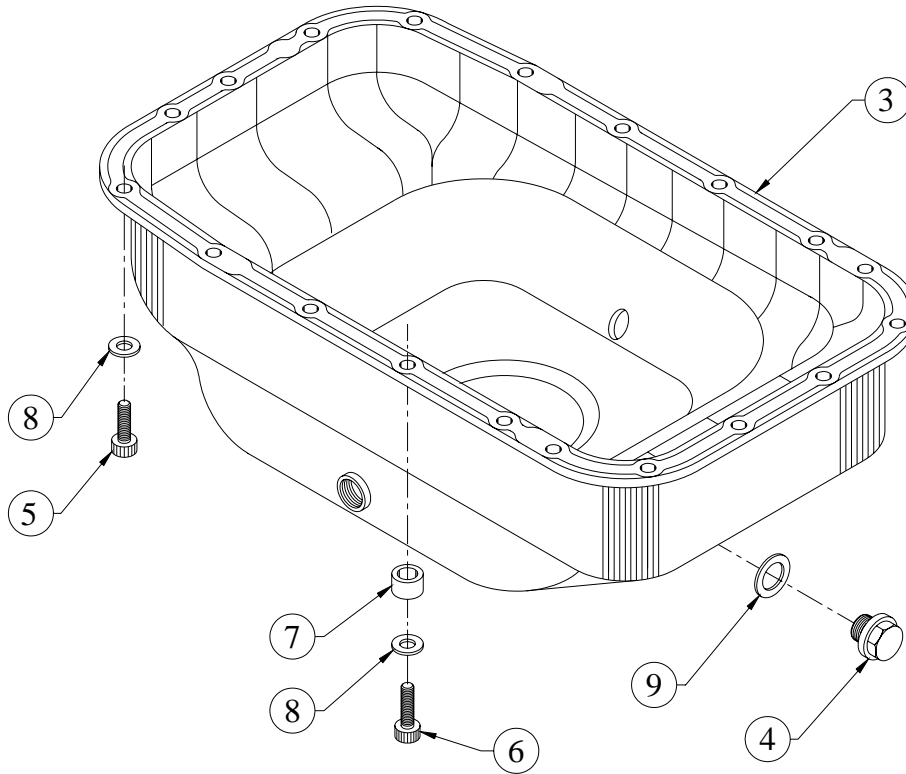
GROUP:- 2H.039...EXP



SR.NO.	PART NO.	DESCRIPTION	QTY.	REMARKS
1	2H.039.10.0.00	PLATE WITH RUBBER MOULDING (FOR FWE OIL SEAL HSG.)	1	
2	2H.006.01.0.00	OIL SEAL HSG.(F.W.E.)	1	
3	2H.006.11.0.00	JOINT FOR OIL SEAL HOUSING	1	
4	50.003.08.020	SET SCREW - M8X1.25X20 - 8.8	10	
5	50.506.08.000	PLAIN MACHINED WASHER - M8	10	
6	03.007.06.0.00	OIL SEAL (115X140 X16) CR MAKE	1	

TITLE :- OIL SUMP (PRESSED)

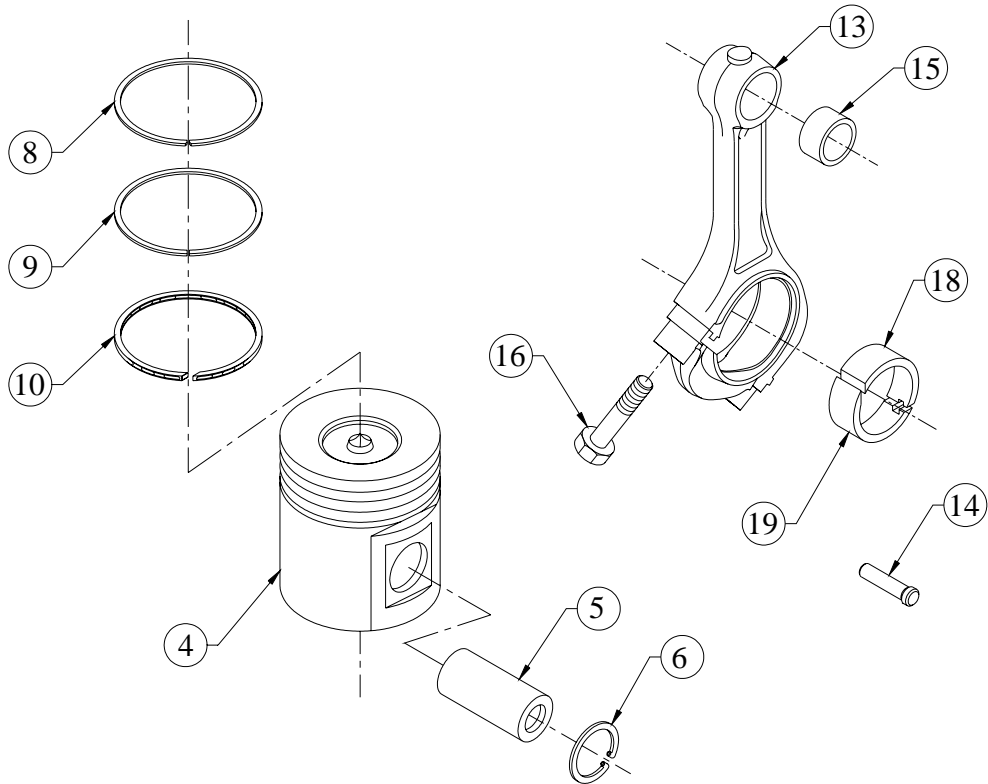
GROUP :- 03.829



SR.NO.	PART NO.	DESCRIPTION	QTY.	REMARKS
*1	03.829.20.0.00	LUB OIL SUMP ASSLY	1	CONSISTING OF SR. NO. 2 & 4
*2	03.829.10.0.00	LUB OIL SUMP ASSLY	1	CONSISTING OF SR. NO. 3
3	03.829.01.0.00	OIL SUMP SHEET METAL (PRESSED)	1	
4	2H.035.10.0.00	DRIAN PLUG ASSEMBLY.	1	
5	50.011.08.016	SOCKET HEAD SCREW - M8X1.25X16 - 8.8	18	
6	50.011.08.025	SOCKET HEAD SCREW - M8X1.25X25 - 8.8	1	
7	06.074.12.0.00	BUSH (KHD NO 0121 6151)	1	
8	06.074.16.0.00	WASHER (SHEET METAL L.O.SUMP)	19	
9	50.508.34.000	COPPER WASHER (30X36)	1	

TITLE :- PISTON & CONNECTING ROD ASSLY.

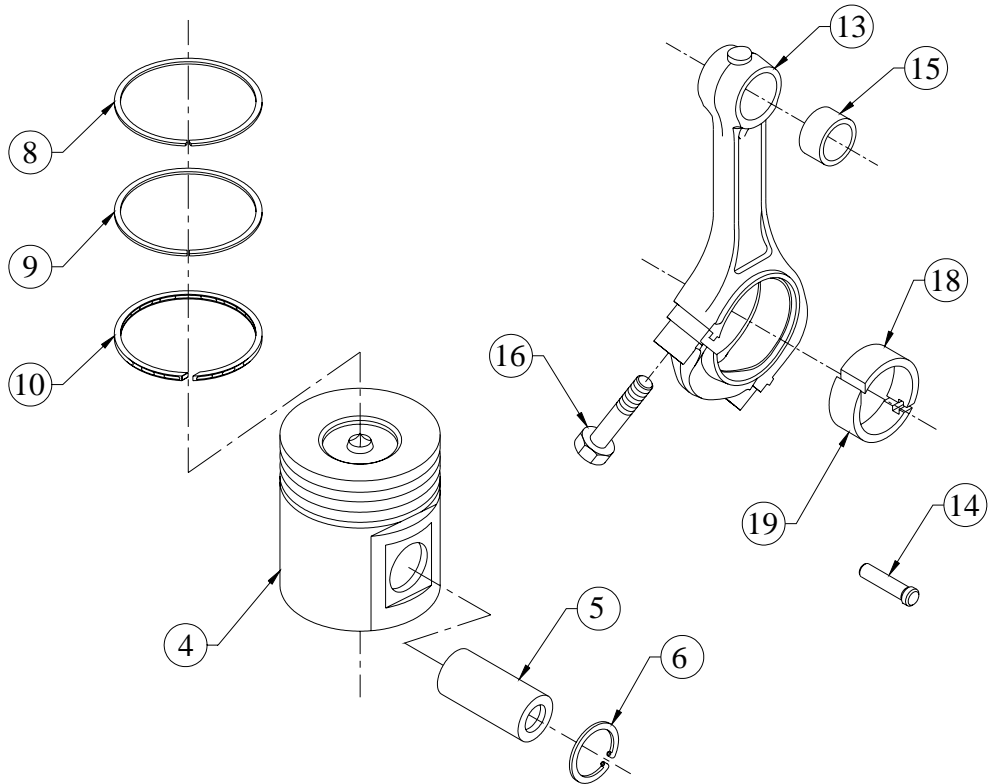
GROUP :- 2H.009



SR.NO.	PART NO.	DESCRIPTION	QTY.	REMARKS
*1	2H.009.40.0.00	PISTON & CON.ROD ASSEMBLY	1	CONSISTING OF SR. NO. 2, 11, 17
*2	2H.009.10.0.00	PISTON ASSEMBLY -COMPLETE	1	CONSISTING OF SR. NO. 3 & 7
*3	2H.009.20.0.00	PISTON WITH PIN AND CIRCLIP.	1	CONSISTING OF SR. NO. 4 TO 6
4	2H.009.01.0.00	PISTON 105 MM DIA (3 RING)A-GROUP	1	
5	34.025.24.0.00	PISTON PIN	1	
6	50.502.35.000.	CIRCLIP (INTERNAL)-35 MM	2	
*7	2H.009.30.0.00	PISTON RING SET (105 DIA.)	1	CONSISTING OF SR. NO. 8 TO 10
8	2H.009.02.0.00	TOP RING (105 DIA)	1	
9	2H.009.03.0.00	COMPRESSION RING (105 DIA)	1	
10	2H.009.04.0.00	OIL CONTROL RING (105 DIA)	1	
*11	02.021.30.0.00	CON.ROD ASSLY.(WITH L.E.BRG.)	1	CONSISTING OF SR. NO. 12

TITLE :- PISTON & CONNECTING ROD ASSLY.

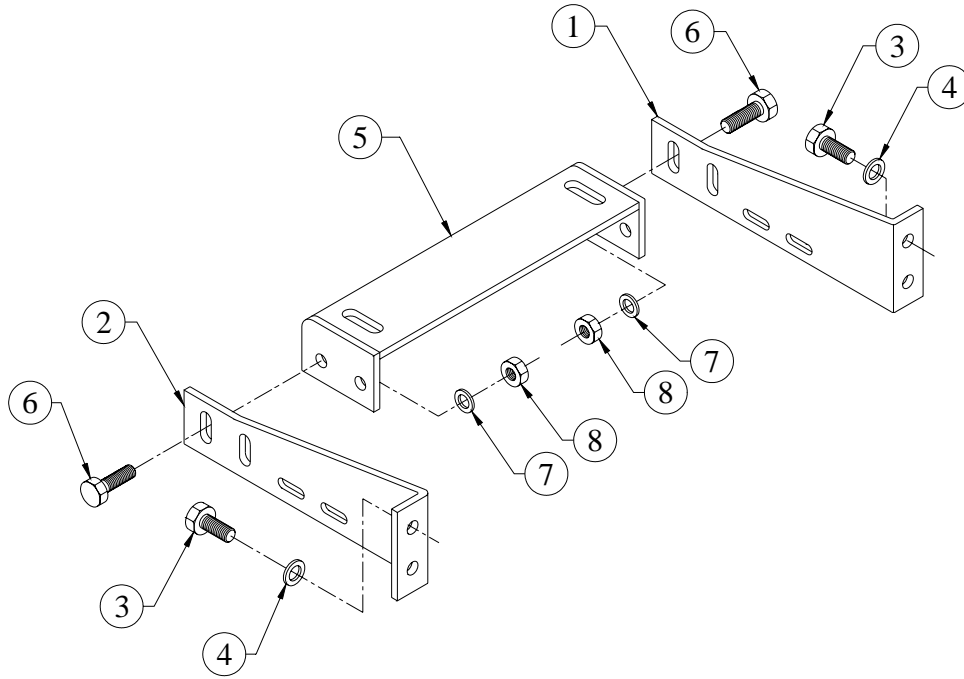
GROUP :- 2H.009



SR.NO.	PART NO.	DESCRIPTION	QTY.	REMARKS
*12	02.021.20.0.00	CON ROD ASSEMBLY (WITHOUT LE BRG.)	1	CONSISTING OF SR. NO. 13 TO 16
13	02.021.01.0.00	CON.ROD (W/O MASS BALANCING)	1	
14	02.021.02.0.00	LOCATING PIN	1	
15	02.021.03.9.00	SMALL END BUSH (S/F)	1	
16	02.021.04.0.00	CON.ROD BOLT	2	
*17	02.021.71.0.00	ASSY.OF L.E BRG.(TOP & BOTTOM)STD (BEARING PART NO. *B – 093400003)	1	CONSISTING OF SR. NO. 18 & 19
18	02.021.05.0.00	LARGE END BEARING (TOP) STD.	1	
19	02.021.06.0.00	LARGE END BEARING (BOTTOM) STD.	1	
*20	B-093400003	L. E. BEARING SET	1	(2 PAIRS) STD.
*21	B-093400013	L.E. BEARING SET	1	0.25 mm U/S
*22	B-093400023	L.E. BEARING SET	1	0.50 mm U/S
*23	B-093400033	L.E. BEARING SET	1	0.75 mm U/S
*24	B-093400043	L.E. BEARING SET	1	1.00 mm U/S
*25	B-093400053	L.E. BEARING SET	1	1.25 mm U/S
*26	B-093400063	L.E. BEARING SET	1	1.50 mm U/S

TITLE:- RADIATOR SUPPORT ASSEMBLY

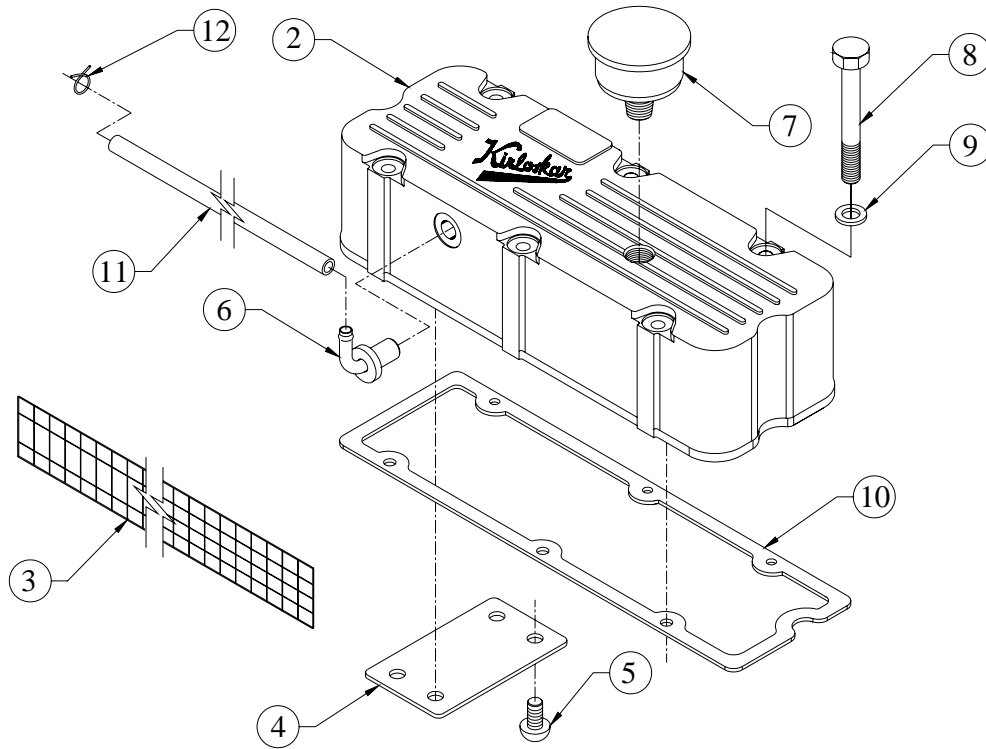
GROUP:- 3H.057.30



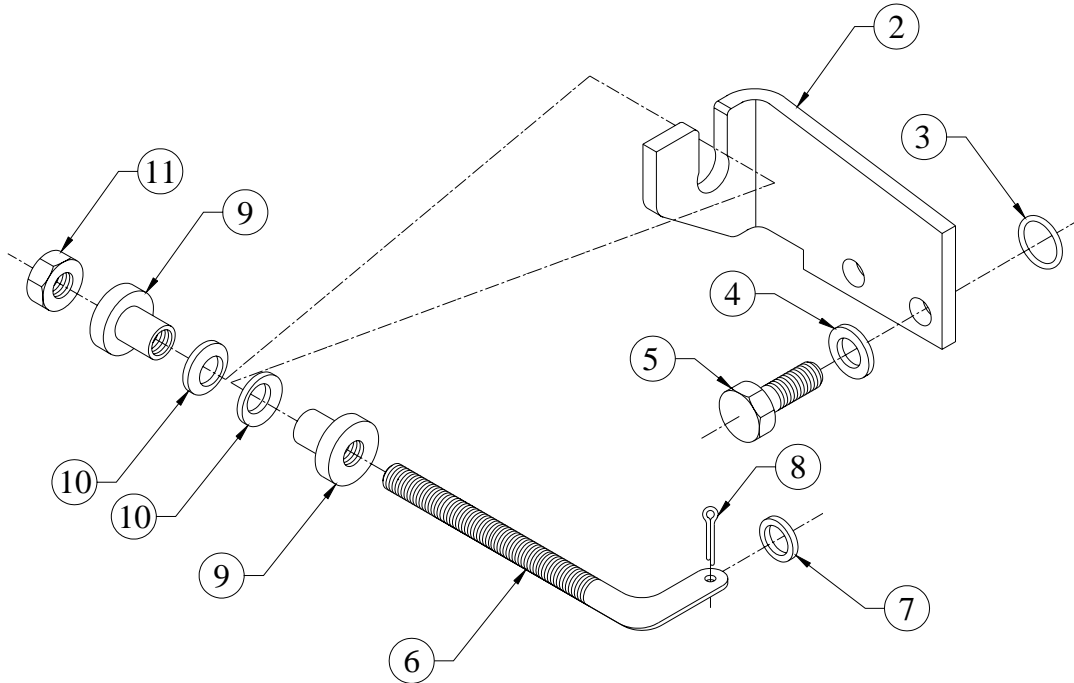
SR.NO.	PART NO.	DESCRIPTION	QTY.	REMARKS
1	4H.081.01.0.00	RADIATOR SUPPORT STARTER SIDE	1	
2	4H.081.02.0.00	RADIATOR SUPPORT FUEL PUMP SIDE	1	
3	50.003.10.020.	SET SCREW - M10X1.5X20 - 8.8	4	
4	65.061.15.0.00	HARD WASHER	4	
5	3H.057.03.0.00	CROSS MEMBER FOR RADIATOR SUPPORT	1	
6	50.003.10.030.	SET SCREW - M10X1.5X30 - 8.8	4	
7	50.548.10.000.	SPECIAL WASHER	8	
8	50.006.10.000.	NUT - M10X1.5 - GR.8	4	

TITLE: - ROCKER COVER (FOR PCV)

GROUP: - 3H.313...EXP



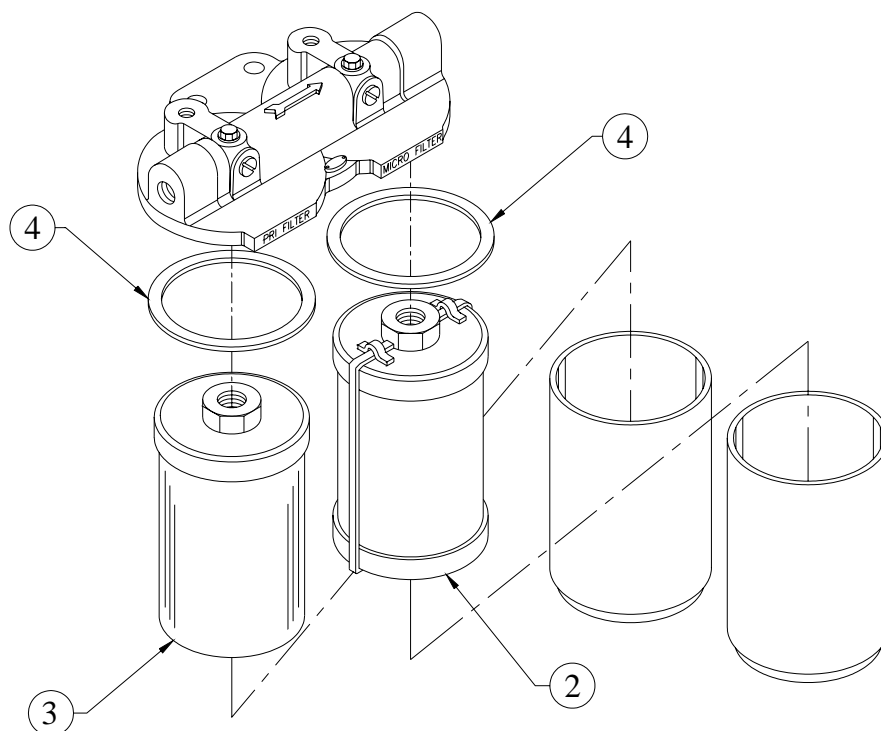
SR.NO.	PART NO.	DESCRIPTION	QTY.	REMARKS
*1	3H.313.20.0.00	SUB ASM OF ROCKER COVER & BREATHER INLET ASM	1	CONSISTING OF SR. NO. 2 TO 7
2	3H.313.01.0.00	ROCKER COVER (MACHINING)	1	
3	2H.204.02.0.00	WIRE MESH	1	
4	4H.139.02.0.00	DEFLECTOR PLATE	1	
5	10.046.02.0.00	P K DRIVE SCREW 1/8"X3/8" (RIVET)	4	
6	2H.203.10.0.00	ASSEMBLY FOR BREATHER INLET	1	
7	4H.139.05.0.PR	AIR CLEANER FOR PCV	1	
8	50.002.08.110.	SET BOLT - M8X1.25X110 - 8.8	6	
9	50.506.08.000.	PLAIN MACHINED WASHER - M8	6	
10	3H.014.11.0.00	JOINT FOR ROCKER COVER	1	
11	3H.313.02.0.00	FLEXIBLE PIPE	1	
12	2H.204.03.0.00	CLIP (SUITABLE FOR 12 DIA PIPE)	2	

TITLE:- SPEED ADJUSTMENT ARRANGEMENT**GROUP:- 49.638**

SR.NO.	PART NO.	DESCRIPTION	QTY.	REMARKS
*1	4H.122.30.0.00	ASSEMBLY FOR ENGINE SPEED ARRANGEMENT	1	CONSISTING OF SR. NO. 2 TO 11
2	4H.122.01.0.00	BRACKET FOR SPEED ADJUSTMENT	1	
3	03.036.01.0.00	O RING - DIPSTICK (2X5,21515 OR 21511)	2	
4	50.506.06.000.	PLAIN MACHINED WASHER - M6	2	
5	50.003.06.015.	SET SCREW - M6X1X15 - 8.8	2	
6	4H.122.02.0.00	BAR FOR SPEED ADJUSTMENT	1	
7	50.548.06.000.	WASHER	1	
8	50.001.01.010.	SPLIT COTTER PIN - 1.6X10	1	
9	03.065.04.0.00	KNURLED NUT	2	
10	03.065.05.0.00	SPHERICAL WASHER	2	
11	50.008.06.000.	LOCK NUT - M6X1 - GR.8	1	

TITLE:- SPIN ON FUEL FILTER
(MICO NO F002 H20 116)

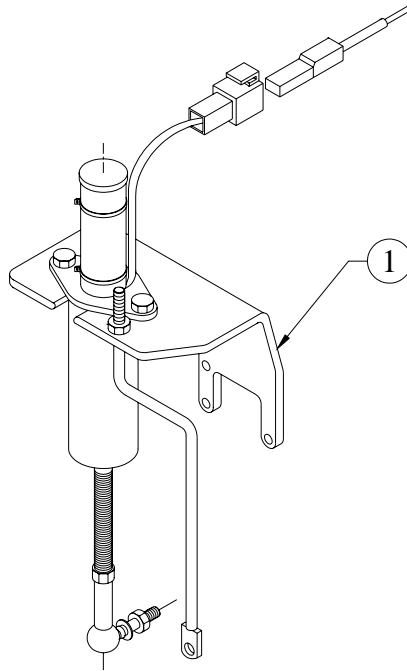
GROUP:- 3H.132



SR.NO.	PART NO.	DESCRIPTION	QTY.	REMARKS
*1	3H.132.10.0.00	SPIN ON FUEL FILTER (TWIN BOWL, 0.6 LIT.)	1	CONSISTING OF SR. NO. 2 TO 4
2	3H.132.01.0.00	PRIMARY ELEMENT	1	
3	3H.132.02.0.00	SECONDARY ELEMENT	1	
4	3H.132.03.0.00	SEALING RING (FUEL FILTER)	2	

**TITLE:- STOP SOLENOID ASSEMBLY 12 VDC
FOR MICO PUMP ENRGIES
TO RUN WITHOUT TIMER**

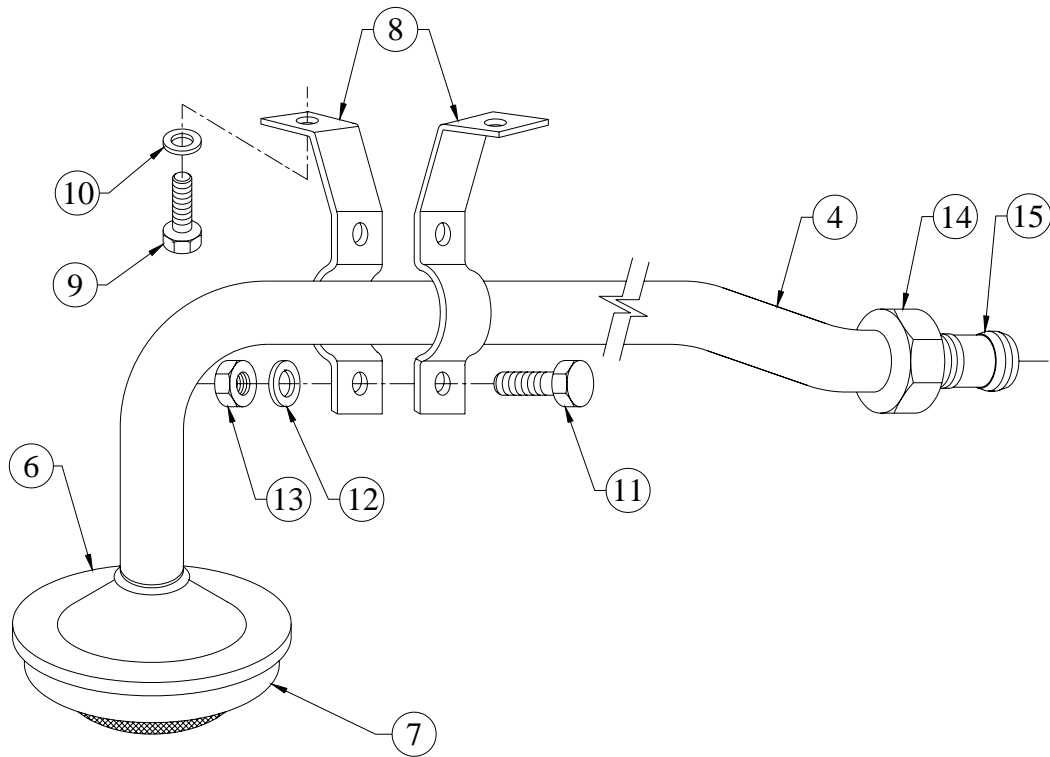
GROUP:- 3H.135.1



SR.NO.	PART NO.	DESCRIPTION	QTY.	REMARKS
1	3H.135.20.0.00	STOP SOLENOID ASSEMBLY 12V D.C. FOR MICO PUMP ENRGIES TO RUN WITHOUT TIMER	1	

TITLE :- SUCTION TUBE

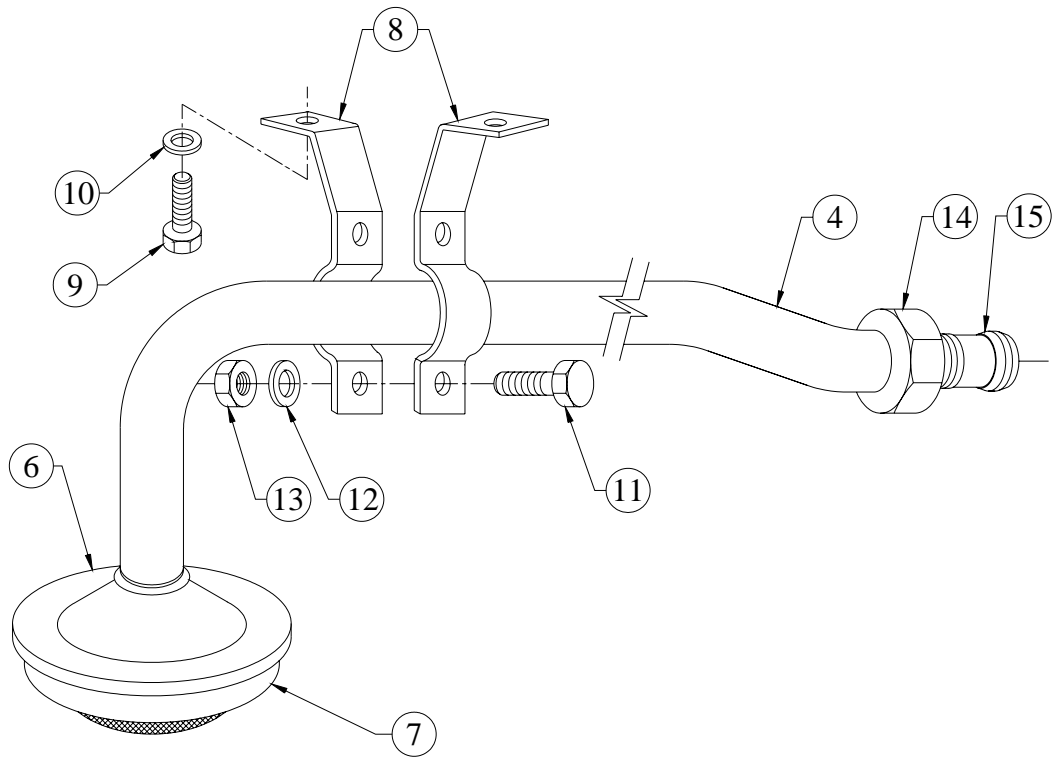
GROUP :- 3H.006



SR.NO.	PART NO.	DESCRIPTION	QTY.	REMARKS
*1	3H.006.20.0.00	SUCTION TUBE	1	CONSISTING OF SR. NO.-2
*2	3H.006.10.0.00	ASSEMBLY OF SUCTION TUBE	1	CONSISTING OF SR. NO.-3, 8 TO 15
*3	3H.006.02.0.00	SUCTION TUBE	1	CONSISTING OF SR. NO.-4 AND 5
4	3H.006.01.0.00	PIPE FOR SUCTION TUBE	1	
*5	04.011.10.0.00	LUB OIL STRAINER ASSLY	1	CONSISTING OF SR. NO.-6 AND 7
6	04.011.02.0.00	BOTTOM PLATE	1	
7	04.011.03.0.00	STRAINER BASKET	1	
8	03.011.04.0.00	CLIP FOR PIPE	2	
9	50.003.08.016	SET SCREW - M8X1.25X16 - 8.8	2	
10	50.506.08.000	PLAIN MACHINED WASHER - M8	2	
11	50.003.06.012	SET SCREW - M6X1X12 - 8.8	2	

TITLE :- SUCTION TUBE

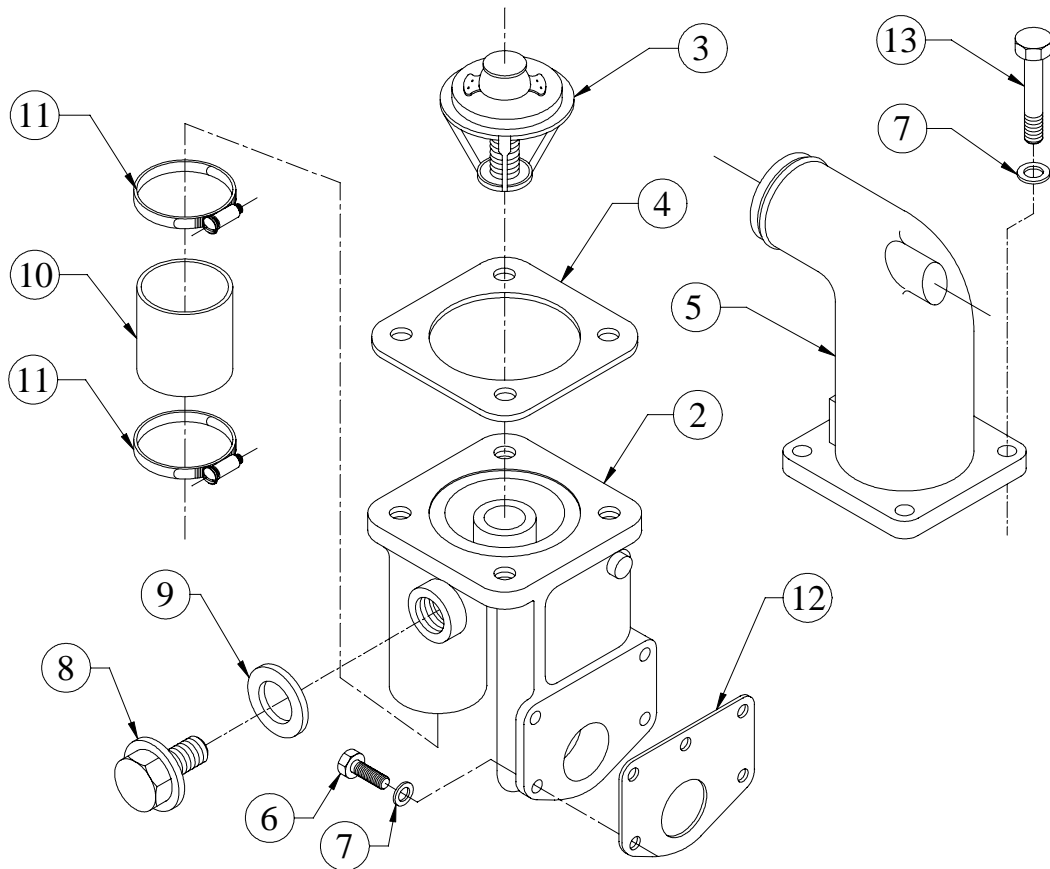
GROUP :- 3H.006



SR.NO.	PART NO.	DESCRIPTION	QTY.	REMARKS
12	50.539.10.000	LOCK WASHER	2	
13	50.006.06.000	NUT - M6X1 - GR.8	2	
14	03.011.02.0.00	UNION NUT	1	
15	03.011.03.0.00	DOUBLE CONE RING	1	

TITLE :- THERMOSTAT & MTG. (USA)

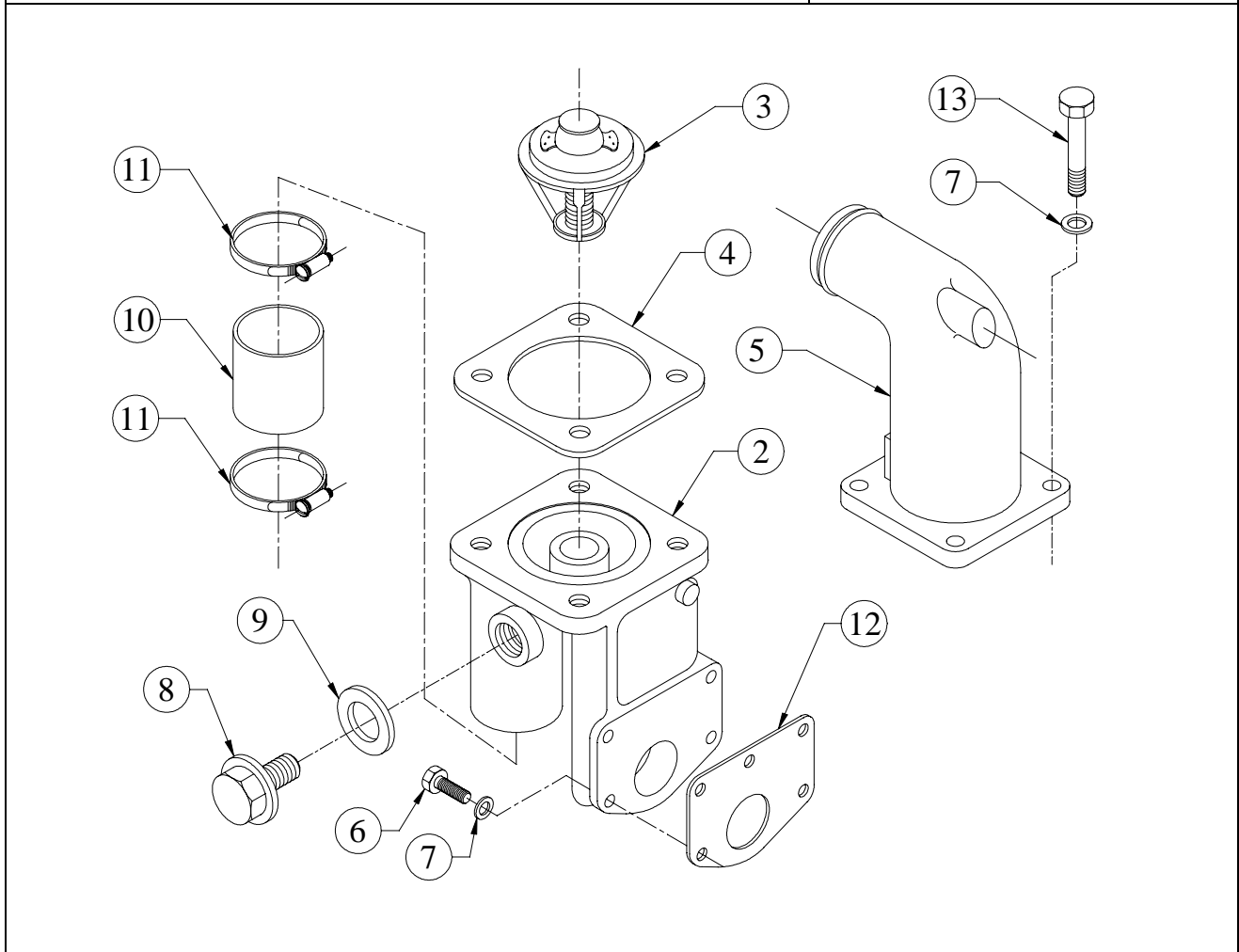
GROUP :- 4H.053...EXP



SR.NO.	PART NO.	DESCRIPTION	QTY.	REMARKS
*1	4H.053.30.0.00	SUB ASSEMBLY OF THERMOSTAT HOUSING	1	CONSISTING OF SR. NO.- 2 TO 11
2	4H.053.01.0.00	THERMOSTAT HOUSING	1	
3	39.040.09.0.00	THERMOSTAT ELEMENT (74 DEG) - WTIL NO.DEV358	1	
4	4H.053.12.0.00	JOINT FOR THERMOSTAT COVER	1	
5	4H.053.02.0.00	THERMOSTAT COVER (PG - 116 HEIGHT)	1	
6	50.003.08.025	SET SCREW - M8X1.25X25 - 8.8	4	
7	50.506.08.000	PLAIN MACHINED WASHER - M8	8	
8	50.602.14.000	PLUG (M14X1.5)	1	
9	50.565.14.000	INTERNAL RUBBER LIP SEALING WASHER -M14- FOR FUEL LINES	1	
10	4H.023.02.0.00	BYPASS HOSE	1	
11	4H.405.07.0.00	STAINLESS STEEL HOSE CLIP S/F 35 TO 41 MM HOSE O.D (TO REPLACE 50519/08)	2	

TITLE :- THERMOSTAT & MTG. (USA)

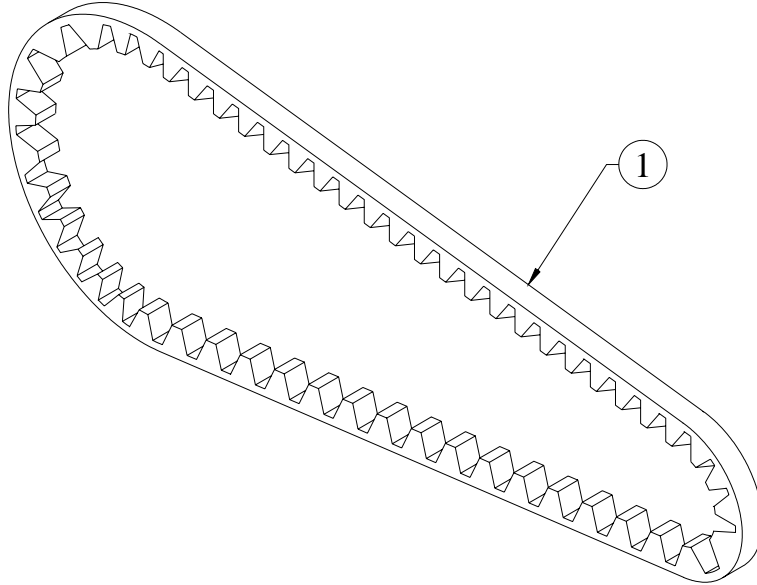
GROUP :- 4H.053...EXP



SR.NO.	PART NO.	DESCRIPTION	QTY.	REMARKS
12	4H.053.11.0.00	JOINT FOR THERMOSTAT HOUSING	1	
13	50.002.08.050.	SET BOLT - M8X1.25X50 - 8.8	4	

TITLE :- V BELT (XPA 1250)

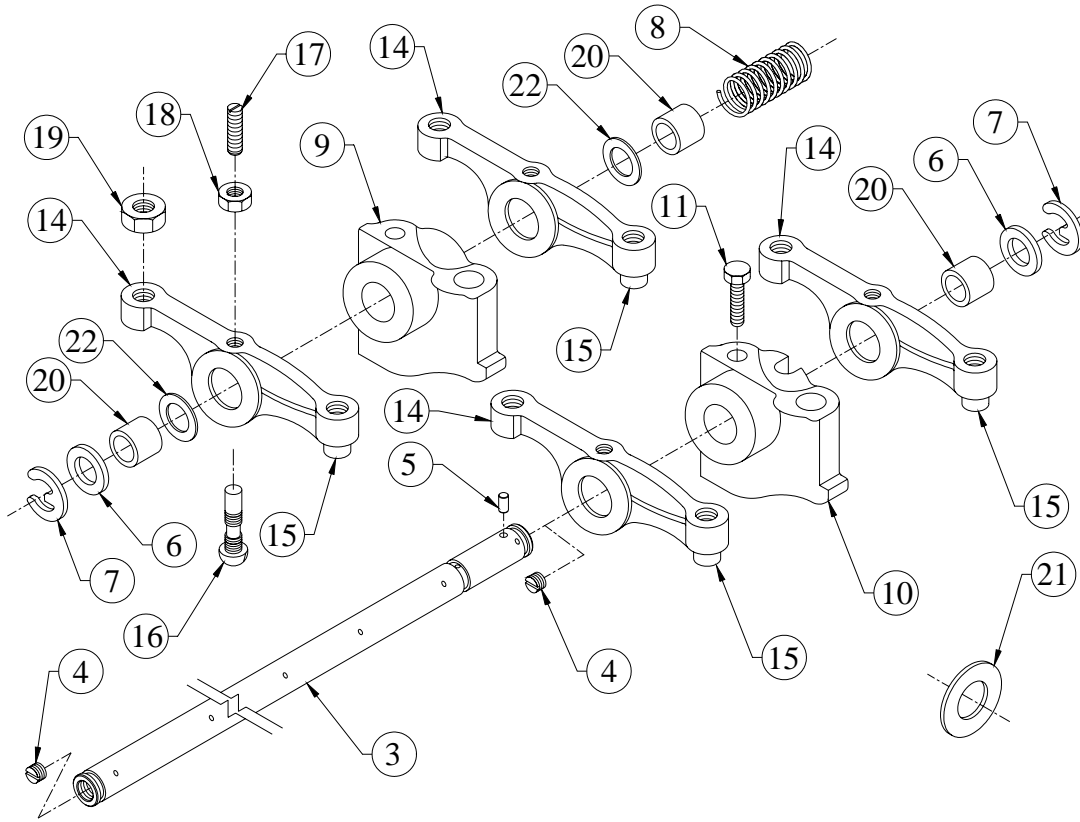
GROUP :- 4H.069



SR.NO.	PART NO.	DESCRIPTION	QTY.	REMARKS
1	4H.069.01.0.00	V BELT (XPA 1250) COGGED	1	

TITLE :- VALVE ROCKER ASSLY.

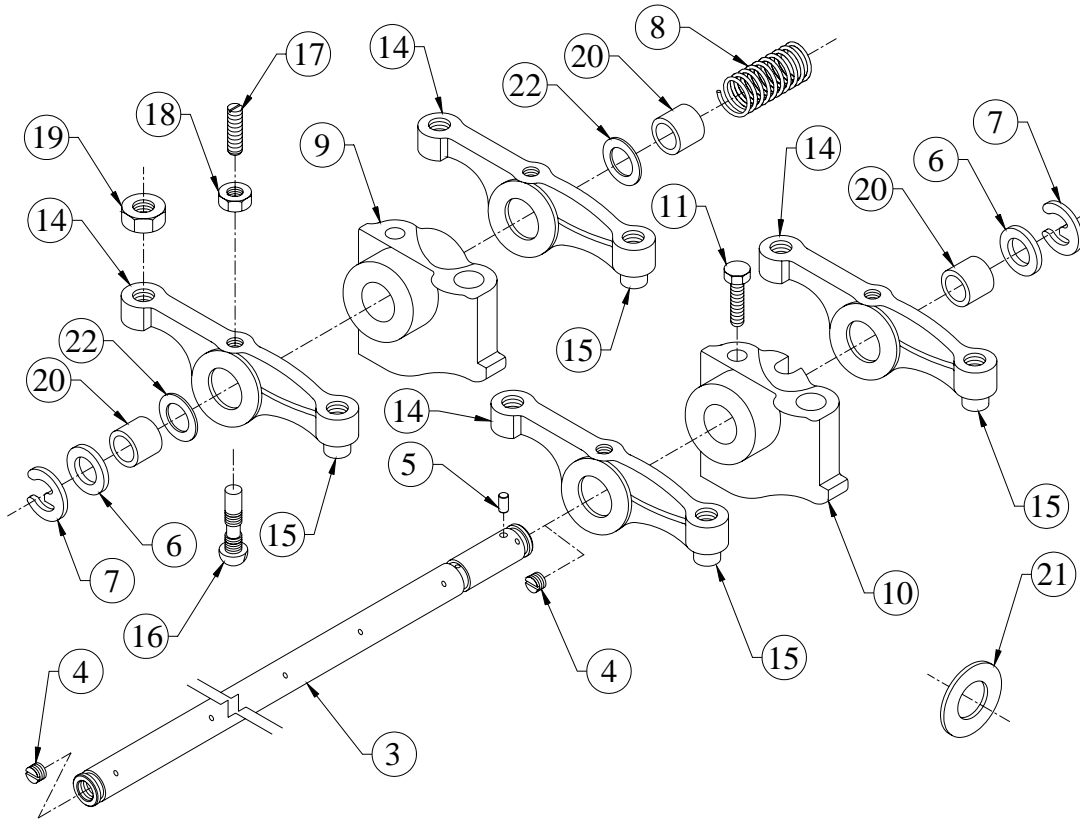
GROUP :- 3H.010



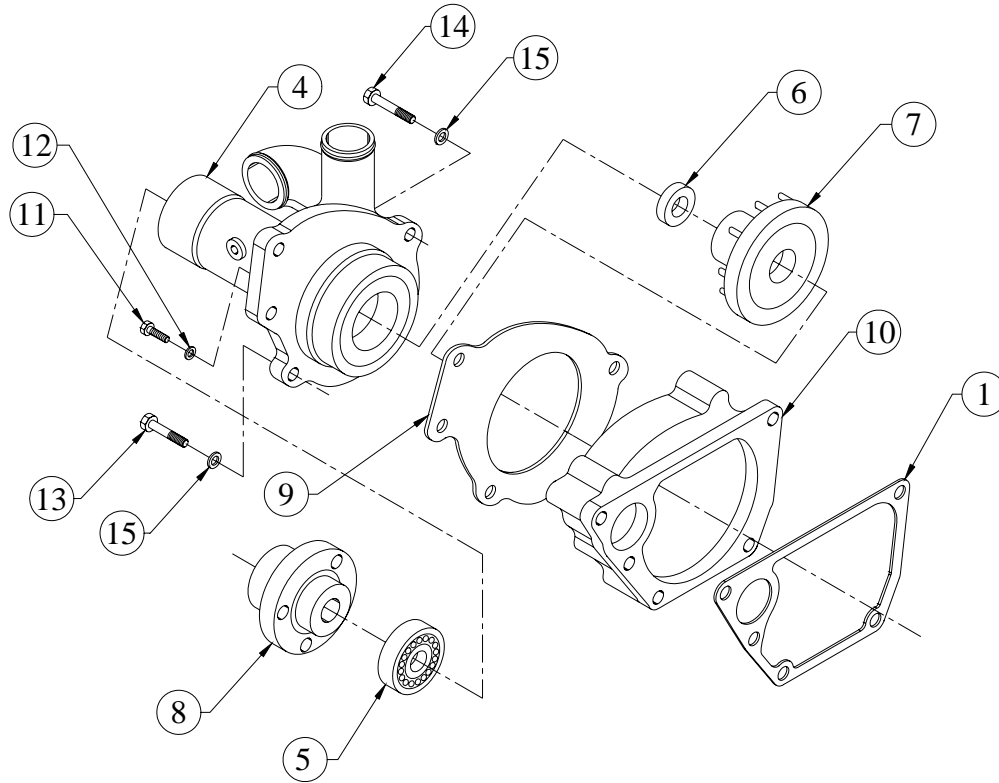
SR.NO.	PART NO.	DESCRIPTION	QTY.	REMARKS
*1	3H.010.10.0.00	VALVE ROCKER ASSLY.	1	CONSISTING OF SR. NO.- 2, 6 TO 12 & 21
*2	3H.010.20.0.00	VALVE ROCKER SHAFT SUB ASSLY.	1	CONSISTING OF SR. NO.- 3, 4 & 5
3	3H.010.01.0.00	ROCKER SHAFT	1	
4	50.022.12.010	SOCKET HEAD GRUB SCREW	2	
5	4H.008.04.0.00	GROOVED SOCKET PIN	1	
6	2H.022.04.0.00	WASHER	2	
7	50.513.15.0.00	'E' TYPE CIRCLIP	2	
8	2H.022.03.0.00	SPRING FOR SOCKET SHAFT	2	
9	2H.022.01.0.00	ROCKER SUPPORT	1	
10	2H.022.02.00	ROCKER SUPPORT	2	
11	50.003.08.030	SET SCREW M8x1.25x030	2	
*12	02.024.20.0.00	VALVE ROCKER ASSLY.	6	CONSISTING OF SR. NO.- 13 & 15 TO 19, 21, 22

TITLE :- VALVE ROCKER ASSLY.

GROUP :- 3H.010



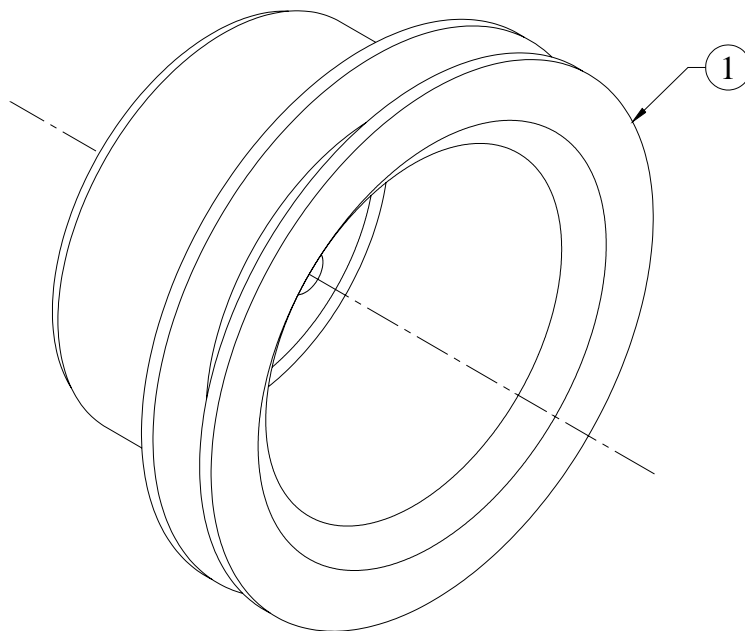
SR.NO.	PART NO.	DESCRIPTION	QTY.	REMARKS
*13	02.024.23.0.00	ROCKER ARM SUB ASSLY.	1	CONSISTING OF SR.NO. 14, 20
14	02.024.11.0.00	ROCKER ARM	1	
15	02.024.15.0.00	V.R. TOE	1	
16	02.024.13.0.00	ROCKER ARM ADJ. SCREW	1	
17	02.024.14.0.00	OIL METERING SCREW	1	
18	50.006.06.0.00	NUT	1	
19	60.007.03.0.00	NUT	1	
20	02.024.12.0.00	V.R. BUSH	1	
21	P2.010.03.0.00	WASHER FOR ROCKER ARM	6	
22	F6.007.13.0.00	WASHER	3	

TITLE: -WATER PUMP**GROUP: -4H.052...EXP**

SR.NO.	PART NO.	DESCRIPTION	QTY.	REMARKS
1	4H.052.12.0.00	JOINT FOR DELIVERY VOLUTE	1	
*2	4H.052.95.0.00	WATER PUMP ASSEMBLY (HIGHER BEARING SIZE)	1	CONSISTING OF SR. NO.- 3, 10 TO 12
*3	4H.052.70.0.00	SUB ASSEMBLY OF DILEVERY VOLUTE	1	CONSISTING OF SR. NO.- 4 TO 9
4	4H.052.05.0.00	BEARING HOUSING (FOR 42 DIA SPINDLE BEARING)	1	
5	4H.052.06.0.00	SPINDLE BEARING (42 DIA)	1	
6	4H.052.07.0.00	UNITISED SEAL (KACO)	1	
7	4H.021.04.0.00	IMPELLER (95 DIA)	1	
8	4H.021.07.0.00	HUB FOR PUMP PULLEY	1	
9	4H.052.11.0.00	JOINT FOR BEARING HOUSING (282.5 CRS)	1	
10	4H.052.02.0.00	DELIVERY VOLUTE (282.5 CRS)	1	
11	50.003.08.025	SET SCREW - M8X1.25X25 - 8.8	3	
12	10.020.03.0.00	HARD WASHER (F)	3	
13	50.002.10.060	SET BOLT - M10X1.5X60 - 8.8	3	

TITLE:- WATER PUMP PULLEY (120 PCD,1,SPA)

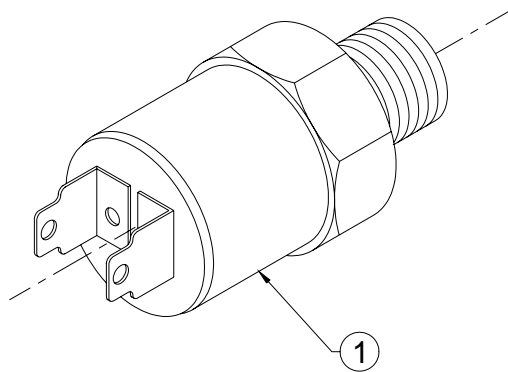
GROUP:- 4H.005



SR.NO.	PART NO.	DESCRIPTION	QTY.	REMARKS
1	4H.021.08.0.00	WATER PUMP PULLEY SPA SECTION (120 PCD)	1	

TITLE :- WATER TEMP.SW.(95 DEG.+1/- 3 DEG)

GROUP :- 46.260



SR.NO.	PART NO.	DESCRIPTION	QTY.	REMARKS
1	46.260.01.0.00	WATER TEMP.SWITCH 95 +1/-3 DEG (YANKEE)	1	

**TITLE:- SET OF JOINTS, WASHERS,
'O' RINGS & HOSES (3H.2084)**

GROUP:-

SR.NO.	PART NO.	DESCRIPTION	QTY.	REMARKS
*1	3H.166.05.0.00	SET OF JOINTS	1	CONSISTING OF SR. NO. 2 TO 21
*2	2H.005.11.0.00	JOINT FOR GEAR COVER	1	
*3	2H.006.11.0.00	JOINT FOR OIL SEAL HOUSING	1	
*4	2H.013.11.0.00	JOINT FOR DELIVERY BODY	1	
*5	2H.017.11.0.00	JOINT FOR COVER FOR FUEL PUMP GEAR	1	
*6	2H.037.11.0.00	JOINT FOR FRONT COVER	1	
*7	34.016.12.0.00	JOINT FOR FUEL PUMP (NON ASBESTOS)	1	
*8	34.107.06.0.00	JOINT FOR ADAPTOR ON EX.MANIFOLD	1	
*9	3H.007.13.0.00	JOINT FOR LUB OIL COOLER (NON ASBESTOS GASKET)	1	
*10	3H.007.15.0.00	JOINT FOR HEADER	1	
*11	3H.009.06.0.00	GASKET FOR CYL.HEAD(1.22 MM)	1	
*12	3H.014.11.0.00	JOINT FOR ROCKER COVER	1	
*13	3H.015.11.0.00	JOINT FOR AIR INLET MANIFOLD	1	

TITLE:- SET OF JOINTS, WASHERS,
'O' RINGS & HOSES (3H.2084)

GROUP:-

SR.NO.	PART NO.	DESCRIPTION	QTY.	REMARKS
*14	4H.001.14.0.00	JOINT FOR CAM BORE BLANKING PLATE	1	
*15	4H.027.11.0.00	JOINT FOR OIL FILLING BODY	1	
*16	4H.035.03.0.00	GASKET FOR EXH.ADAPTOR	1	
*17	4H.035.06.0.00	GASKET (FOR EXHAUST MANIFOLD)	3	
*18	4H.052.11.0.00	JOINT FOR BEARING HOUSING (282.5 CRS)	1	
*19	4H.052.12.0.00	JOINT FOR DELIVERY VOLUTE	1	
*20	4H.053.11.0.00	JOINT FOR THERMOSTAT HOUSING	1	
*21	4H.053.12.0.00	JOINT FOR THERMOSTAT COVER	1	
*22	3H.166.54.0.00	SET OF WASHERS	1	CONSISTING OF SR. NO. 23 TO 35
*23	50.508.05.000.	COPPER WASHER (8X12)	6	
*24	50.508.07.000.	COPPER WASHER (10X14)	4	
*25	50.508.11.000.	COPPER WASHER (14X18)	1	
*26	50.508.14.000.	COPPER WASHER (16X22)	1	

TITLE:- SET OF JOINTS, WASHERS,
'O' RINGS & HOSES (3H.2084)

GROUP:-

SR.NO.	PART NO.	DESCRIPTION	QTY.	REMARKS
*27	50.508.15.000.	COPPER WASHER (17X23)	1	
*28	50.508.16.000.	COPPER WASHER (18X22)	1	
*29	50.508.18.000.	COPPER WASHER (20X24)	2	
*30	50.508.27.000.	COPPER WASHER (24X29)	1	
*31	50.508.34.000.	COPPER WASHER (30X36)	1	
*32	50.565.10.000.	INTERNAL RUBBER LIP SEALING WASHER -M10- FOR FUEL LINES	2	
*33	50.565.12.000.	INTERNAL RUBBER LIP SEALING WASHER -M12- FOR FUEL LINES	4	
*34	50.565.14.000.	INTERNAL RUBBER LIP SEALING WASHER -M14- FOR FUEL LINES	7	
*35	50.566.10.000.	INTERNAL RUBBER LIP SEALING WASHER -M10- FOR LUB OIL LINES	1	
*36	3H.166.06.0.00	SET OF 'O' RINGS	1	CONSISTING OF SR. NO. 37 TO 42

**TITLE:- SET OF JOINTS, WASHERS,
'O' RINGS & HOSES (3H.2084)**

GROUP:-

SR.NO.	PART NO.	DESCRIPTION	QTY.	REMARKS
*37	03.010.11.0.00	O RING - L.O.PUMP (1.57X65,21508)	1	
*38	03.036.01.0.00	O RING - DIPSTICK (2X5,21515 OR 21511)	5	
*39	2H.008.07.0.00	O RING (FOR CYL.LINER)	3	
*40	2H.014.02.0.00	O RING(FOR DELIVERY TUBE)	2	
*41	3H.009.11.0.00	O RING FOR NOZZLE	1	
*42	3H.132.03.0.00	SEALING RING (FUEL FILTER)	2	
*43	3H.166.82.0.00	SET OF HOSES	1	CONSISTING OF SR. NO. 44 TO 47
*44	4H.006.01.0.00	L.O.SUPPLY HOSE (FIP)	1	
*45	4H.023.02.0.00	BYPASS HOSE	1	
*46	4H.073.02.0.00	HOSE WATER PUMP TO RADIATOR(45X45X80L)	1	
*47	4H.404.02.0.00	HOSE FOR AIR CLEANER	1	